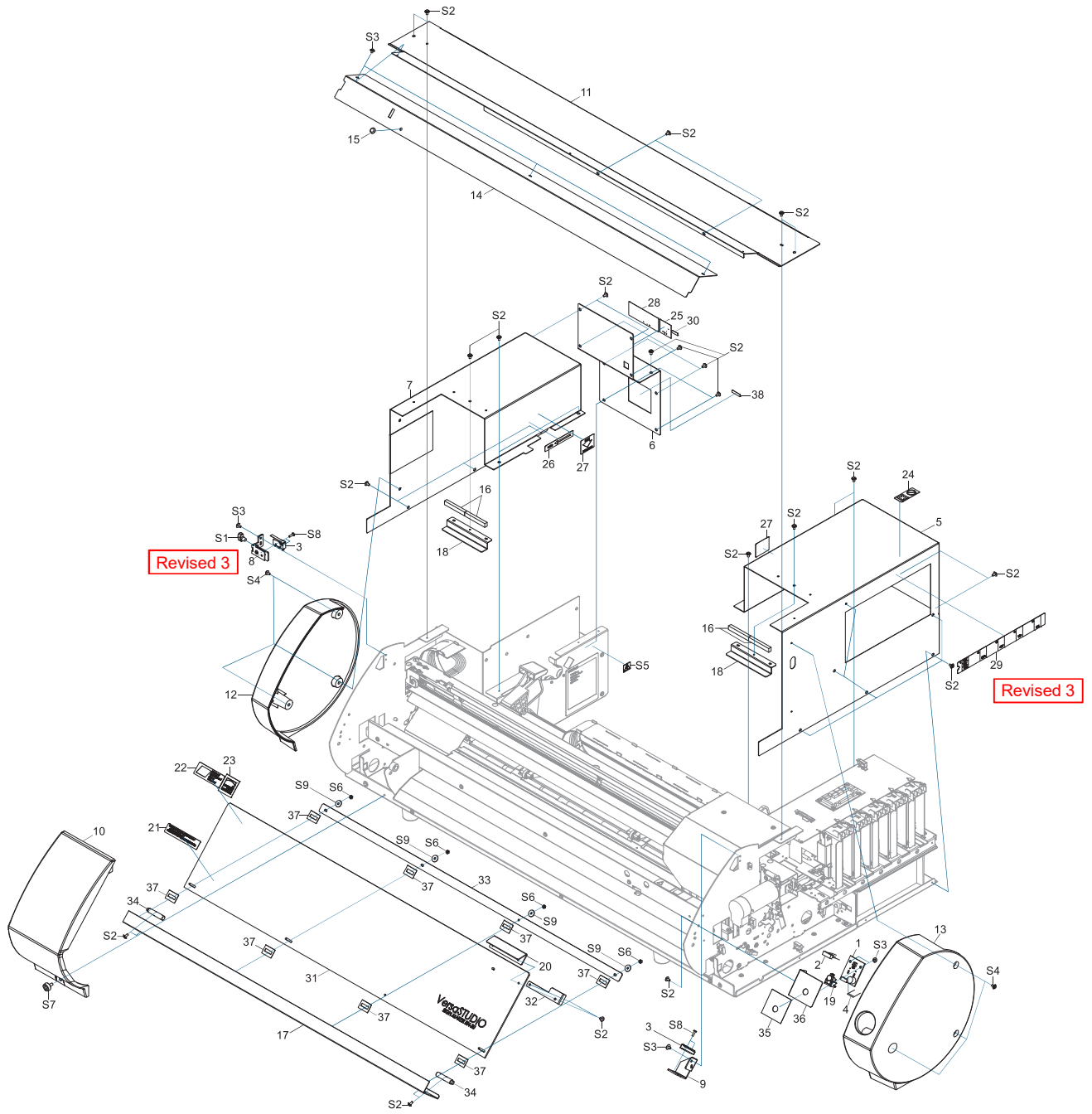


1 Structure & Spare Parts

1-1 COVER



1-1 COVER

PARTS LIST -Main Parts-

	Parts No.	Parts Name	qt.
1	W701681210	ASSY,PANEL BOARD BN-20	1
2	1000008155	CABLE-ASSY, COVER FM BN-20	1
3	1000007697	CABLE-ASSY,COVER SW BN-20	2
4	1000007714	CABLE-CARD,12P1 500L BB	1
5	1000007670	COVER,CARTRIDGE BN-20	1
6	1000008668	COVER,CHASSIS BACK BN-20	1
7	1000007671	COVER,CHASSIS BN-20	1
8	1000009386	ASSY,COVER INT SW L BN-20	Revised 3 1
	1000009372	COVER,INT SW BN-20_01	Revised 3 1
9	1000008171	COVER,INT SW R BN-20	1
10	1000007748	COVER,MAINTENANCE BN-20	1
11	1000007674	COVER,RAIL BN-20	1
12	1000007745	COVER,SIDE L BN-20	1
13	1000007746	COVER,SIDE R BN-20	1
14	1000007675	COVER,TOP BN-20	1
	1000009371	COVER,TOP BN-20_01	Revised 3 1
15	1000008762	CUSHION,TM-96-4	1
16	1000003086	FILTER(E),RAIL SHIELD VP-540	4
17	1000008827	FRAME,COVER FRONT BN-20	1
18	1000008667	HOLDER,FILTER SHIELD BN-20	2
19	22495102	KEY TOP,CLEAR GX-24	1
20	1000008830	KNOB,COVER FRONT BN-20	1
21	1000008832	LABEL, EMERGENCY STOP-2#LA1270	1
22	1000008833	LABEL, RIPC BK#1271	1
23			g
24	1000001099	LABEL,HARMFUL FIRE #LA915	1
25	1000003489	LABEL,MARK ECO#LA1014	1
26	1000008761	LABEL,PINCH LEVER UP DOWN#LA1284	1
27	1000008760	LABEL,PLESS BAR IN#LA1273	2
28	22535444	LABEL,READ MANUAL #LA637	1
29	1000009389	LABEL,SET INK 2 BN-20#LA1341	Revised 3 1
30	1000008759	LABEL,USB#LA1274	1
31	1000008826	PLATE,COVER F BN-20	1
32	1000008831	PLATE,INT SW BN-20	1
33	1000008829	PLATE,NUT COVER F BN-20	1
34	1000008828	SHAFT,COVER FRONT BN-20	2
35	1000008164	SHEET,PANEL BN-20	1
36	1000008163	STAY,PANEL BN-20	1
37	21425110	WASHER,COVER FJ-50	8
38	22535117	LABEL,POWER CM-500 NO.893	1

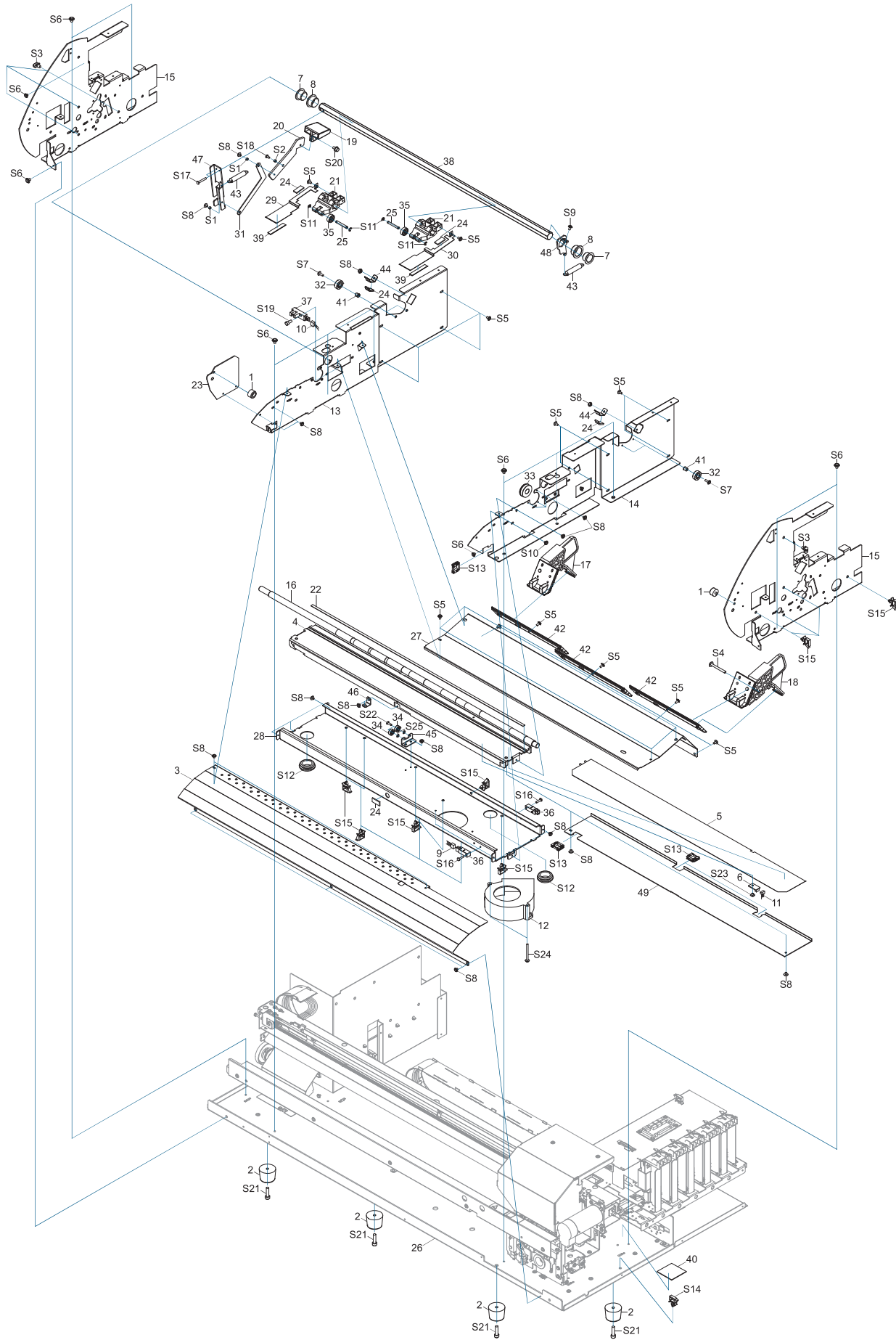
* qt. indicates the number of parts that is described in the figure.

Revised 3: Refer to the Service Information BN20-007, BN20-008, BN20-009

PARTS LIST -Supplemental Parts-

	Parts No.	Parts Name	qt.
S1	31329501AS	CLAMP SET,PUSH MOUNT RT30SSF5 20P	1
S2	31289105AS	CUPSCREW SET, M3*6 3CBC 100 PCS	40
S3	31289109AS	CUPSCREW SET,M3*4 NI 100 PCS.	6
S4	31289102AS	CUPSCREW SET,M3*6 NI 50 PCS.	6
S5	31279121	LABEL,FLASH-LIGHTING NO.E-582	1
S6	31109801AS	NUT SET,HEXAGON M3 NI 100 PCS.	4
S7	3000000191	PLAPOINT,FE 4*10 WH 3C	1
S8	31019149	SCREW SET,BINDING M2.3*8 3CBC 100PCS	4
S9	31249225	WASHER SET,PLAIN 3*12*1 3CBC 50PCS.	4

1-2 FRAME and BED (ZA01755 and below) **Revised 3**



1-2 FRAME and BED (ZA01755 and below) Revised 3

PARTS LIST -Main Parts-

	Parts No.	Parts Name	qt.
1	1000008757	ABSOBER,CP-30-FF-10	2
2	11879108	ABSORBER TK-3225	4
3	1000007668	APRON,F BN-20	1
4	1000007720	ASSY,BED SUB BN-20	1
5	1000008576	ASSY,CORD HEATER BN-20	1
6	W701681250	ASSY,THERMISTOR BOARD BN-20	1
7	1000001068	BUSH,80F-1610	2
8	1000007768	BUSH,80F-1810	2
	1000007706	CABLE-ASSY,PAPER SENS BN-20	1
10	1000007708	CABLE-ASSY,PINCH UD SENS BN-20	1
11	1000007711	CABLE-ASSY,THERMISTER BN-20	1
12	1000007789	FAN,9BAM24HA2+CN	1
13			
14			
15			
16	1000007718	G-ROLLER,FD12.037 T BN-20	1
17	1000008924	ASSY,GUIDE FLANGE L BN-20 Revised 2	1
18	1000008925	ASSY,GUIDE FLANGE R BN-20	1
19	1000001601	KNOB,XC-540	1
20	1000007678	LEVER,CAM PINCH BN-20	1
21	1000007941	LEVER,P-ROLLER BN-20	2
22	1000007739	PAD,CUTTER BN-20	1
23	1000008664	STAY,F COVER L BN-20	1
24	1000007740	PAD,MEDIA SPRING BN-20	5
25	22145831	PIN NO.1 (214-831)	2
26			
27	1000007679	PLATE,BED REAR BN-20	1
28			
29	1000007752	PLATE,CLAMP MEDIA L BN-20	1
30	1000007753	PLATE,CLAMP MEDIA R BN-20	1
31	1000007683	PLATE,LEVER LINK BN-20	1
32	12569118	PULLEY BEARING	2
33	1000006709	R-BEARING,600ZZNR*NS7S	1
34	21505116	ROLLER,FD12S4(B4.6C5) TW	2
35	1000007940	ROLLER,PINCH BN-20	2
36	6701689060	PAPER SENSOR BN-20 Revised 4	2
37	1000006689	SENSOR-INTERRUPTER,EE-SX4009-P1	1
38	1000007757	SHAFT,HEXAGON BN-20	1
39	1000007741	SHEET,CLAMP MEDIA BN-20	2
40	1000008657	SHEET,DRAIN BN-20	1
41	1000008159	SLEEVE,TOK BEARING BN-20	2
42	1000007751	SLIDER,GUIDE FLANGE BN-20	3
43	1000007755	SPRING,PINCH F3K BN-20	2
44	22625103	SPRING,PRESS CARTRIDGE SP-300	2
45			
46	1000007687	STAY,BED CENTER BN-20	1
47	1000007690	STAY,PINCH LEVER L BN-20	1
48	1000007691	STAY,PINCH LEVER R BN-20	1
49	1000007684	PLATE,SHUTTER BN-20	1

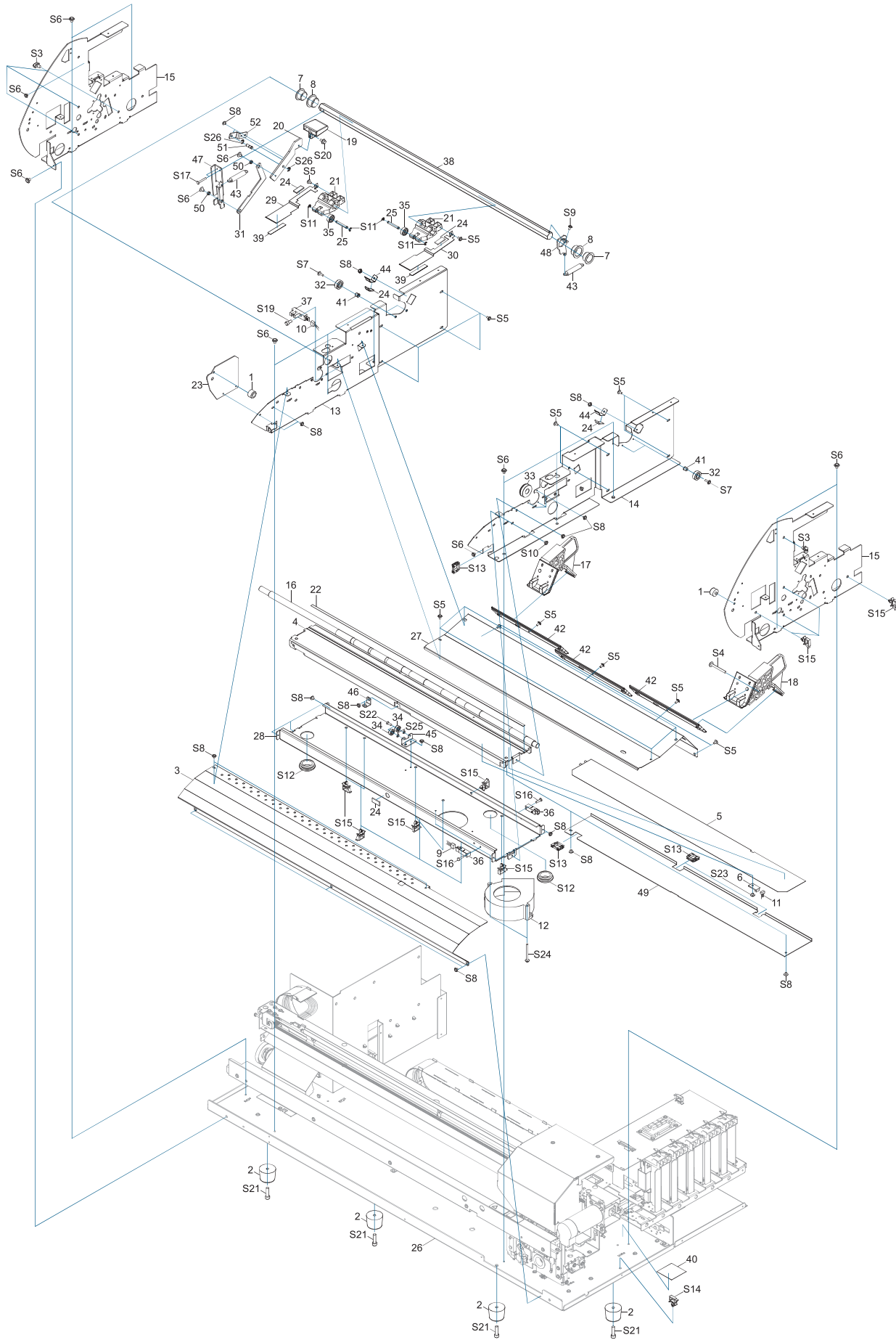
PARTS LIST -Supplemental Parts-

	Parts No.	Parts Name	qt.
S1	31029825	BUSH SET,ROLL 3*2.5 3C 100 PCS.	2
S2	31029802AS	BUSH SET,ROLL 3*3.5 3C 100PCS.	1
S3	31329501AS	CLAMP SET,PUSH MOUNT RT30SSF5 20P	2
S4	31289114AS	CUPSCREW SET, M3*30 NI 100 PCS.	1
S5	31289105AS	CUPSCREW SET, M3*6 3CBC 100 PCS	19
S6	31289111AS	CUPSCREW SET, M4*6 NI 100 PCS.	12
S7	31289112AS	CUPSCREW SET,M3*10 NI 100 PCS.	2
S8	31289109AS	CUPSCREW SET,M3*4 NI 100 PCS.	26
S9	31289102AS	CUPSCREW SET,M3*6 NI 50 PCS.	2
S10	31289115	CUPSCREW,4*30 NI 50PCS	1
S11	31149702AS	RING SET,E-RING ETW-3 100 PCS.	4
S12	3000000065	RUBBER,GROMMET MAKUTUKI MG-5	2
S13	31409702	SADDLE SET,LOCKING WIRE LES-1010 20P	7
S14	31409811AS	SADDLE SET,LOCKING WIRE LWS-1211Z 20P	1
S15	31409801AS	SADDLE,LOCKING WIRE LWS-0711Z 20P	8
S16	31019119	SCREW SET,BINDING M3*12 NI 100PCS.	2
S17	31019121	SCREW SET,BINDING M3*20 NI 100 PCS	2
S18	31019116AS	SCREW SET,BINDING M3*6 3CBC 100 PCS	1
S19	31049173AS	SCREW SET,CAP M4*10 NI 50 PCS.	1
S20	31049169AS	SCREW SET,CAP M4*8 3CBC+PW 20PCS	1
S21	31799110AS	SCREW SET,CAP M5*20 NI 20PCS.	4
S22	31169105	SCREW SET,FLAT M3*10 NI 100 PCS	2
S23	31089110AS	SCREW SET,PAN M3*4 NI+PW 100 PCS	1
S24	31239116	SCREW,W-SEMS M3*40 BC	2
S25	31249201AS	WASHER SET,PLAIN 3*6*0.5 C 100PCS	2

* qt. indicates the number of parts that is described in the figure.

Revised 4: Refer to the Service Information BN20-011

1-2 FRAME and BED (ZA01756 and above) **Revised 3**



1-2 FRAME and BED (ZA01756 and above) Revised 3

PARTS LIST -Main Parts-

	Parts No.	Parts Name	qt.
1	1000008757	ABSOBER,CP-30-FF-10	2
2	11879108	ABSORBER TK-3225	4
3	1000007668	APRON,F BN-20	1
4	1000007720	ASSY,BED SUB BN-20	1
5	1000008576	ASSY,CORD HEATER BN-20	1
6	W701681250	ASSY,THERMISTOR BOARD BN-20	1
7	1000001068	BUSH,80F-1610	2
8	1000007768	BUSH,80F-1810	2
	1000007706	CABLE-ASSY,PAPER SENS BN-20	1
10	1000007708	CABLE-ASSY,PINCH UD SENS BN-20	1
11	1000007711	CABLE-ASSY,THERMISTER BN-20	1
12	1000007789	FAN,9BAM24HA2+CN	1
13			
14			
15			
16	1000007718	G-ROLLER,FD12.037 T BN-20	1
17	1000008924	ASSY,GUIDE FLANGE L BN-20	1
18	1000008925	ASSY,GUIDE FLANGE R BN-20	1
19	1000001601	KNOB,XC-540	1
20	1000009141	LEVER,CAM PINCH BN-20_01 Revised 3	1
21	1000007941	LEVER,P-ROLLER BN-20	2
22	1000007739	PAD,CUTTER BN-20	1
23	1000008664	STAY,F COVER L BN-20	1
24	1000007740	PAD,MEDIA SPRING BN-20	5
25	22145831	PIN NO.1 (214-831)	2
26			
27	1000007679	PLATE,BED REAR BN-20	1
28			
29	1000007752	PLATE,CLAMP MEDIA L BN-20	1
30	1000007753	PLATE,CLAMP MEDIA R BN-20	1
31	1000009142	PLATE,LEVER LINK BN-20_01 Revised 3	1
32	12569118	PULLEY BEARING	2
33	1000006709	R-BEARING,6000ZZNR*NS7S	1
34	21505116	ROLLER,FD12S4(B4.6C5) TW	2
35	1000007940	ROLLER,PINCH BN-20	2
36	6701689060	PAPER SENSOR BN-20 Revised 4	2
37	1000006689	SENSOR-INTERRUPTER,EE-SX4009-P1	1
38	1000007757	SHAFT,HEXAGON BN-20	1
39	1000007741	SHEET,CLAMP MEDIA BN-20	2
40	1000008657	SHEET,DRAIN BN-20	1
41	1000008159	SLEEVE,TOK BEARING BN-20	2
42	1000007751	SLIDER,GUIDE FLANGE BN-20	3
43	1000007755	SPRING,PINCH F3K BN-20	2
44	22625103	SPRING,PRESS CARTRIDGE SP-300	2
45			
46	1000007687	STAY,BED CENTER BN-20	1
47	1000009140	STAY,PINCH LEVER L BN-20_01 Revised 3	1
48	1000007691	STAY,PINCH LEVER R BN-20	1
49	1000007684	PLATE,SHUTTER BN-20	1
50	1000009144	SPACER,LINK BN-20 Revised 3	2
51	1000009143	SHAFT,LINK BN-20 Revised 3	1
52	1000009145	STAY,LINK BN-20 Revised 3	1

PARTS LIST -Supplemental Parts-

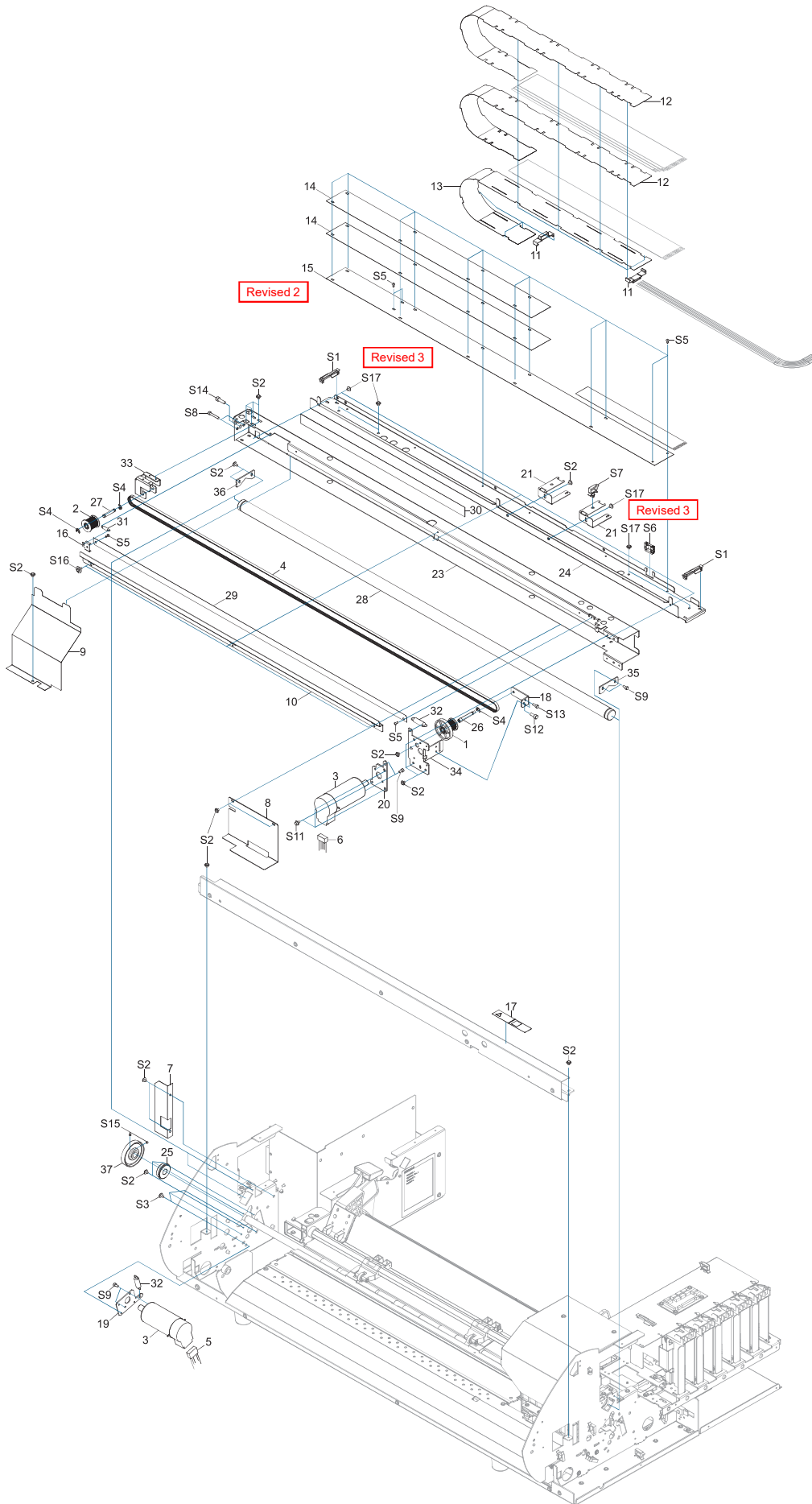
	Parts No.	Parts Name	qt.
S1	31029025	BUSH SET,ROLL 3*2.5 3C 100 PCS.	2
S2	31029002AS	BUSH SET,ROLL 3*3.5 3C 100PCS.	4
S3	31329501AS	CLAMP SET,PUSH MOUNT RT30SSF5 20P	2
S4	31289114AS	CUPSCREW SET, M3*30 NI 100 PCS.	1
S5	31289105AS	CUPSCREW SET, M3*6 3CBC 100 PCS	19
S6	31289111AS	CUPSCREW SET, M4*6 NI 100 PCS.	12
S7	31289112AS	CUPSCREW SET,M3*10 NI 100 PCS.	2
S8	31289109AS	CUPSCREW SET,M3*4 NI 100 PCS.	26
S9	31289102AS	CUPSCREW SET,M3*6 NI 50 PCS.	2
S10	31289115	CUPSCREW,4*30 NI 50PCS	1
S11	31149702AS	RING SET,E-RING ETW-3 100 PCS.	4
S12	3000000065	RUBBER,GROMMET MAKUTUKI MG-5	2
S13	31409702	SADDLE SET,LOCKING WIRE LES-1010 20P	7
S14	31409811AS	SADDLE SET,LOCKING WIRE LWS-1211Z 20P	1
S15	31409801AS	SADDLE,LOCKING WIRE LWS-0711Z 20P	8
S16	31019119	SCREW SET,BINDING M3*12 NI 100PCS.	2
S17	31019121	SCREW SET,BINDING M3*20 NI 100 PCS	2
S18	31019116AS	SCREW SET,BINDING M3*6 3CBC 100 PCS	1
S19	31049173AS	SCREW SET,CAP M4*10 NI 50 PCS Revised 3	1
S20	31049169AS	SCREW SET,CAP M4*8 3CBC+PW 20PCS	1
S21	31799110AS	SCREW SET,CAP M5*20 NI 20PCS.	4
S22	31169105	SCREW SET,FLAT M3*10 NI 100 PCS	2
S23	31089110AS	SCREW SET,PAN M3*4 NI+PW 100 PCS	1
S24	31239116	SCREW,W-SEMS M3*40 BC	2
S25	31249201AS	WASHER SET,PLAIN 3*6*0.5 C 100PCS	2
S26	31149703AS	RING SET,E-RING ETW-4 100 PCS. Revised 3	2

* qt. indicates the number of parts that is described in the figure.

Revised 3: Refer to the Service Information BN20-006

Revised 4: Refer to the Service Information BN20-011

1-3 DRIVE UNIT



1-3 DRIVE UNIT

PARTS LIST -Main Parts-

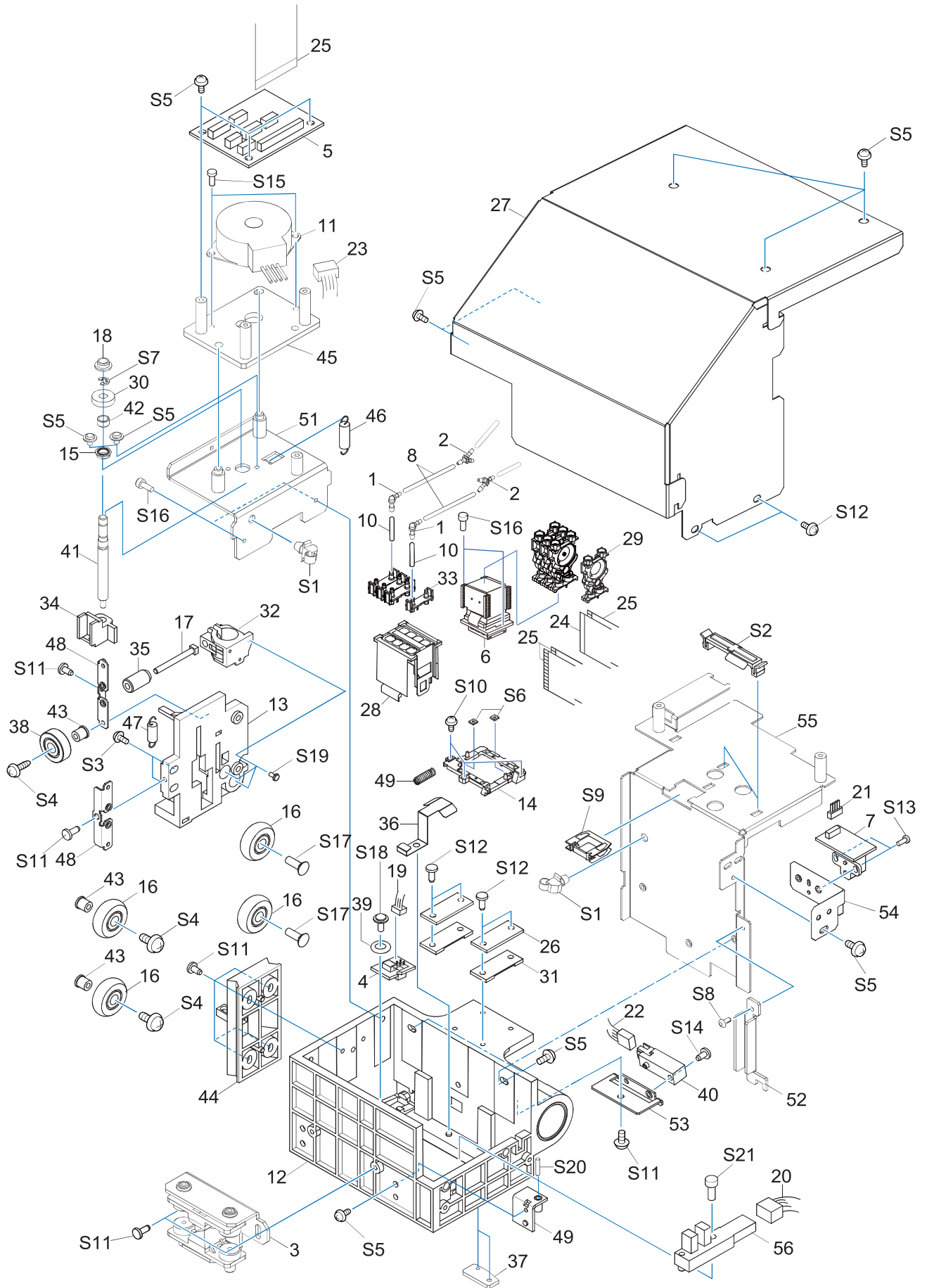
	Parts No.	Parts Name	qt.
1	1000007942	ASSY,DRIVE PULLEY SV BN-20	1
2	1000007943	ASSY,IDLE PULLEY SV BN-20	1
3	6701689010	ASSY,SCAN FEED MOTOR BN-20	2
4	1000008157	BELT,50S2M910LW-C	1
5	1000007701	CABLE-ASSY,FEED MOTOR BN-20	1
6	1000007710	CABLE-ASSY,SCAN MOTOR BN-20	1
7	1000008659	COVER,FEED GEAR BN-20	1
8	1000008156	COVER,I/S BN-20	1
	1000008879	COVER,INNER BN-20_01	1
10	1000007673	COVER,LINEAR SCALE BN-20	1
11	1000008680	GUIDE,TUBE BN-20	6
12	1000007736	HOLDER,CABLE BN-20	2
13	1000007737	HOLDER,CABLE F BN-20	1
14	1000008878	HOLDER,CABLE UNDER BN-20_01	2
15	1000009101	HOLDER,CABLE UNDER2 BN-20_01	Revised 2 1
16	1000007677	HOLDER,LINEAR SCALE BN-20	1
17	1000008756	LABEL,CAUTION BN-20#LA1269	1
18	1000007680	PLATE,BELT ADJUST BN-20	1
19	1000008678	PLATE,FEED MOTOR BN-20	1
20	1000008170	PLATE,SCAN MOTOR BN-20	1
21	1000008161	PLATE,TUBE BN-20	2
23			
24	1000009100	RAIL,GUIDE TUBE BN-20_02	Revised 2 1
25	1000006709	R-BEARING,6000ZZNR*NS7S	1
26	1000007977	SHAFT,DRIVE PULLEY BN-20	1
27	1000007978	SHAFT,IDLE PULLEY BN-20	1
28	1000007759	SHAFT,RAIL BN-20	1
29	1000007719	SHEET,LINEAR SCALE BN-20	1
30	1000008755	SHEET,RAIL REAR BN-20	1
31	22175122	SPRING,BACK UP PNC-960	1
32	22175157	SPRING,C P-ROLLER CM-500	2
33	1000007901	STAY,IDLE PULLEY BN-20	1
34	1000008167	STAY,SCAN MOTOR BN-20	1
35	1000007694	STOPPER,RAIL SHAFT BN-20	1
36	1000008666	STOPPER,RAIL SHAFT L BN-20	1
37	1000009032	GEAR,H150S10(B8) TYPE2	Revised 2 1

PARTS LIST -Main Parts-

	Parts No.	Parts Name	qt.
S1	3000000030	CLAMP,WIRE PRESS RFC-33V0	2
S2	31289109AS	CUPSCREW SET,M3*4 NI 100 PCS.	23
S3	31289102AS	CUPSCREW SET,M3*6 NI 50 PCS.	3
S4	31149703AS	RING SET,E-RING ETW-4 100 PCS.	3
S5	31299102AS	RIVET SET,NYLON P2655B 20 PCS.	16
S6	31409702	SADDLE SET,LOCKING WIRE LES-1010 20P	1
S7	31409801AS	SADDLE,LOCKING WIRE LWS-0711Z 20P	1
S8	31049172	SCREW SET,CAP M3*20 NI 20PCS	2
S9	31049105AS	SCREW SET,CAP M3*6 3CBC 20 PCS	8
S11	31049154AS	SCREW SET,CAP M3*6 NI+PW 20 PCS	3
S12	31049170AS	SCREW SET,CAP M3*8 NI 50 PCS.	1
S13	31049173AS	SCREW SET,CAP M4*10 NI 50 PCS.	2
S14	31049174AS	SCREW SET,CAP M4*15 NI 20 PCS.	1
S15	31199701AS	SCREW SET,SET WP M3*3 NI 20 PCS	2
S16	31239103AS	SCREW SET,W-SEMS M3*8 NI+PW 50 PCS	3
S17	31049154	CAP-SCREW,3*6 NI WSH 3*8*0.5	Revised 3 7

* qt. indicates the number of parts that is described in the figure.

1-4 HEAD CARRIAGE



1-4 HEAD CARRIAGE

PARTS LIST -Main Parts-

	Parts No.	Parts Name	qt.
1	1000007743	ADAPTER,JOINT 2-3L MCL1522	8
2	1000007744	ADAPTER,JUNCTION 2Y MCY-1	4
3	1000008825	ASSY,CARRIAGE ADJUST BN-20	1
4	W701681240	ASSY,CROPMARK SENSOR BOARD BN-20	1
5	W701681230	ASSY,CUT CARRIAGE BOARD BN-20	1
6	6701409010	ASSY,HEAD INKJET VS-640	1
7	6701681100	ASSY,LINEAR ENCODER BOARD BN-20	1
8	22805479	ASSY,TUBING 2*100MM FJ-540	7
	22805572	ASSY,TUBING 2*80MM SP-540V	7
10	1000003136	ASSY,TUBING 3*150MM VP-540	8
11	6701689020	ASSY,WIPER TOOL UD MOTOR BN-20	1
12	1000008809	BASE,CARRIAGE BN-20	1
13	1000008815	BASE,CUT BN-20	1
14	1000006530	BASE,HEAD VS-640	1
15	1000008823	BEARING,FLWA675ZZ	1
16	1000008824	BEARING,PLASTIC DO-22-H6	4
17	21815101	BOLT,PENHOLDER	1
18	1000000796	BUSH,80F-0503	1
19	1000007698	CABLE-ASSY,CROPMARK SENSOR BN-20	1
20	1000007702	CABLE-ASSY,HEAD ORG SENS BN-20	1
21	1000007704	CABLE-ASSY,LINEAR ENC BN-20	1
22	1000007707	CABLE-ASSY,PINCH POS SENS BN-20	1
23	1000007712	CABLE-ASSY,TOOL UD MOTOR BN-20	1
24	1000007716	CABLE-CARD,28P1 1750L BB HIGH-V	1
25	1000007717	CABLE-CARD,29P1 1750L BB HIGH-V	4
26	22025646	COVER,BELT HOLDER EGX-600	2
27	1000007735	COVER,CARRIAGE BN-20	1
28	1000006528	COVER,HEAD INKJET VS-640	1
29	1000006526	DAMPER,INK VS-640	4
	1000012719	DAMPER,INK VS-640_01	Revised 9
30	1000008821	GEAR,CUT SHAFT BN-20	2
31	21655232	HOLDER,BELT EGX-600	2
32	1000004535	HOLDER,PEN XC-540	1
33	1000006529	JOINT,HEAD VS-640	4
34	1000008810	NUT,CUT BN-20	1
35	22285503	NUT,PENHOLDER	1
36	1000007754	PLATE,HEAD GND BN-20	1
37	1000008914	PLATE,NUT IJ CARRIAGE BN-20	1
38	12569118	PULLEY BEARING	1
39	1000007765	RING,O P7	1
40	6701689060	PAPER SENSOR BN-20	Revised 4
41	1000008814	SHAFT,SCREW M6 BN-20	1
42	1000008913	SLEEVE,CUT SHAFT BN-20	1
43	1000008159	SLEEVE,TOK BEARING BN-20	3
44	1000008816	SLIDER,CUT BN-20	1
45	1000008822	SPACER,CUT MOTOR BN-20	1
46	1000008820	SPRING,CUT B BN-20	1
47	1000008812	SPRING,CUT BN-20	1
48	1000008818	SPRING,CUT ROLLER A BN-20	2
49	22175520	SPRING,HEAD ADJUST 500 FJ-540	1

Revised 4: Refer to the Service Information BN20-011

PARTS LIST -Main Parts-

	Parts No.	Parts Name	qt.
50	1000008811	STAY,ALIGN HEAD BN-20	1
51	1000008817	STAY,CUT UNIT BN-20	1
52	1000008876	STAY,IJ CARRIAGE FLEX BN-20	1
53	1000008813	STAY,MEDIA SENSOR BN-20	1
54	1000007693	STAY,SENSOR LINER SCALE BN-20	1
55	1000008663	STAY,TUBE BN-20	1
56	1000006689	SENSOR-INTERRUPTER,EE-SX4009-P1	1

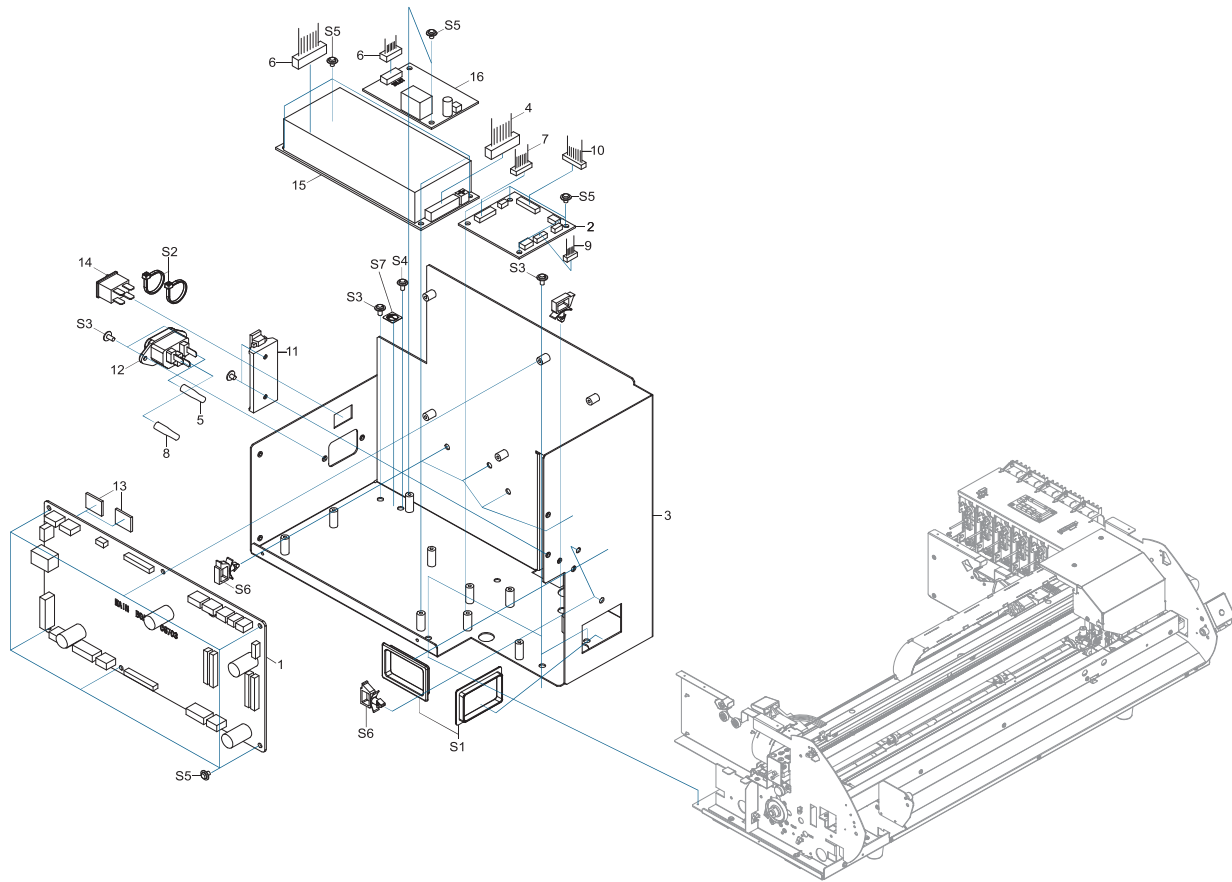
	Tube No.	
	3FAI Tube	2FAI Tube
Cartridge No.	No.10	No.8
1	50	40
2	50	
3	50	55
	50	55
4	50	75
	50	75
5	50	55
	50	75

PARTS LIST -Supplemental Parts-

	Parts No.	Parts Name	qt.
S1	31329501AS	CLAMP SET,PUSH MOUNT RT30SSF5 20P	2
S2	3000000030	CLAMP,WIRE PRESS RFC-33V0	2
S3	31289108AS	CUPSCREW SET, M3*8 NI 100 PCS.	2
S4	31289112AS	CUPSCREW SET,M3*10 NI 100 PCS.	3
S5	31289109AS	CUPSCREW SET,M3*4 NI 100 PCS.	14
S6	31109601	NUT SET,SQUARE M3*6*1.6 FE NI 100PCS	2
S7	31149702AS	RING SET,E-RING ETW-3 100 PCS.	1
S8	31299102AS	RIVET SET,NYLON P2655B 20 PCS.	1
S9	31409702	SADDLE SET,LOCKING WIRE LES-1010 20P	1
S10	3000000190	SCREW SET, W-SEMS,2.3*10 3C 50pcs	3
S11	31019702AS	SCREW SET,BIND P-TIGHT M3*6 3C 100P	9
S12	3000000192	SCREW SET,BIND P-TIGHT3*10 3CBC 100PC	6
S13	31019148AS	SCREW SET,BINDING M2.6*4 NI 100 PCS	2
S14	31019119	SCREW SET,BINDING M3*12 NI 100PCS.	1
S15	31019115AS	SCREW SET,BINDING M3*4 3CBC 100 PCS	2
S16	31049170AS	SCREW SET,CAP M3*8 NI 50 PCS.	4
S17	31169113	SCREW SET,FLAT M4*12NI 50 PCS	2
S18	31239103AS	SCREW SET,W-SEMS M3*8 NI+PW 50 PCS	1
S19	31089902	SCREW,PAN S-TIGHT M2*5 3C 100PCS	3
S20	31199905AS	SCREW SET,SET CONE M3*16 NI 20 PCS	1
S21	31049173AS	SCREW SET,CAP M4*10 NI 50 PCS.	1

* qt. indicates the number of parts that is described in the figure.

1-5 CHASSIS



PARTS LIST -Main Parts-

	Parts No.	Parts Name	qt.
1	6701681000	ASSY,MAIN BOARD BN-20	1
2	W701681260	ASSY,POWER BOARD BN-20	1
3	1000008160	BASE,CHASSIS BN-20	2
4	1000008066	CABLE-ASSY,41V CONTROL BN-20	1
5	1000007695	CABLE-ASSY,AC-POWER1 BN-20	1
6	1000007696	CABLE-ASSY,AC-POWER2 BN-20	1
7	1000007700	CABLE-ASSY,DC-POWER BN-20	1
8	1000008063	CABLE-ASSY,EARTH BN-20	1
9	1000007703	CABLE-ASSY,HEATER CONTROL BN-20	1
10	1000007705	CABLE-ASSY,MAIN POWER BN-20	1
11	11769118	CLAMP,FCM2-S6-14	1
12	13429702	INLET AC P01CF01 15A250V	1
13	1000008153	PAD,TMS-14-30 22X30	2
14	13129170	POWER SW AJ7201B	1
15	1000007763	POWER UNIT,LFA100F-J1R2Y-D41	1
	1000012802	POWER UNIT,LFA100F-48-HJ1R2YD41_01	
16	1000007764	POWER UNIT,LFA10F-5-J1	1

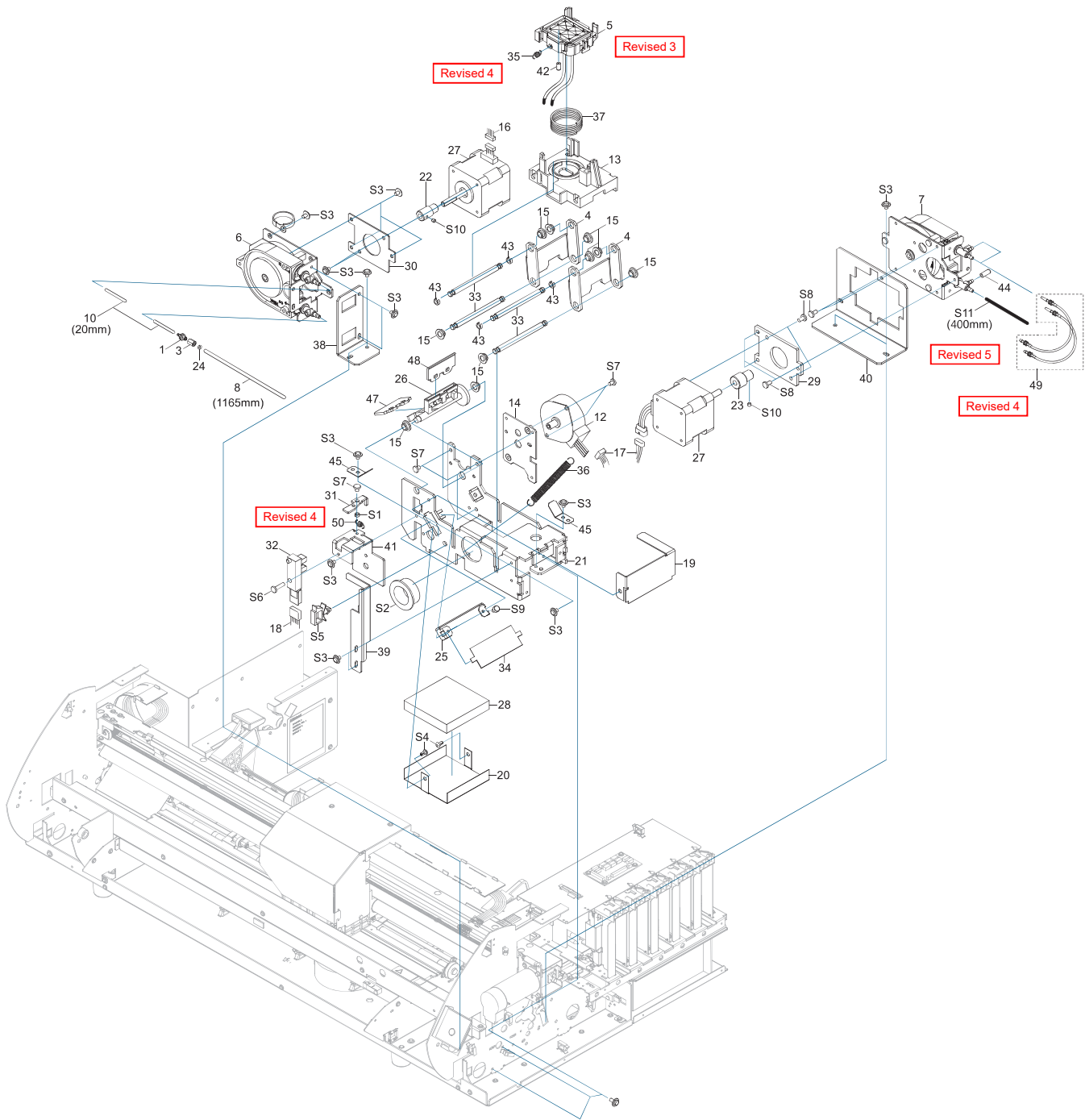
PARTS LIST -Supplemental Parts-

	Parts No.	Parts Name	qt.
S1	31029901	BUSH,SQUARE SB-4025	2
S2	31329601AS	CLAMP SET,INSULOK T-18S 100 PCS.	2
S3	31289105AS	CUPSCREW SET, M3*6 3CBC 100 PCS	5
S4	31289111AS	CUPSCREW SET, M4*6 NI 100 PCS.	1
S5	31289109AS	CUPSCREW SET,M3*4 NI 100 PCS.	18
S6	31409801AS	SADDLE,LOCKING WIRE LWS-0711Z 20P	6
S7	31279116	LABEL,EARTH MARK-1 NO.E-580	1

* qt. indicates the number of parts that is described in the figure.

Revised 9

1-6 WIPE and CAP SYSTEMS



1-6 WIPE and CAP SYSTEMS

PARTS LIST -Main Parts-

	Parts No.	Parts Name	qt.
1	1000004796	ADAPTER,JOINT 2-3FAI RS-540	1
2	4000008804	ADAPTER,JOINT 2S MCS-15	2
3	11909133	ADAPTER,SCREW 2FAI FJ-50	1
4	1000006747	ARM,LINK UP VS-640	2
5	6701689040	ASSY,CAP TOP BN-20_01	1
6	6701219010	ASSY,CIRCULATING PUMP LEC-330	1
7	6700319010	ASSY,PUMP SUB XC-540	1
8	1000002059	ASSY,TUBING 2*1300MM XC-540	1
9	1000000407	ASSY,TUBING 2*230MM IS-1000	1
10	1000004121	ASSY,TUBING 3*95MM BU-1	2
14	4000007135	ASSY,TUBING EPDM ID2-OD4-100MM	2
12	6701689020	ASSY,WIPER TOOL UD MOTOR BN-20	1
13	1000006521	BASE,BACK-UP CAP VS-640	1
14	1000007669	BASE,WIPE MOTOR BN-20	1
15	1000000796	BUSH,80F-0503	10
16	1000007699	CABLE-ASSY,CURCULATION MOTOR BN-2	1
17	1000007709	CABLE-ASSY,PUMP MOTOR BN-20	1
18	1000007713	CABLE-ASSY,WIPER LIMIT SENS BN-20	1
19	1000008624	COVER,WIPE SCRAPER BN-20	1
20	1000008165	COVER,WIPE UNDER BN-20	1
21	1000007676	FRAME,CAP&WIPE BN-20	1
22	21685122	GEAR,S10S20	1
23	1000006751	GEAR,S14S5(B12)	1
24	11659149	HOLDER,RING O 2FAI FJ-50	1
25	1000008224	HOLDER,SCRAPER BN-20	1
26	1000007750	HOLDER,WIPER BN-20	1
27	22435106	MOTOR,103-593-1041	2
28	1000008166	PAD,WIPE BN-20	1
29	1000006750	PLATE,P-MOTOR VS-640	1
30	1000001585	PLATE,P-MOTOR XC-540	1
31	1000008893	PLATE,WIPE SENSOR BN-20	1
32	1000006689	SENSOR-INTERRUPTER,EE-SX4009-P1	1
33	1000006746	SHAFT,CAP VS-640	4
34	1000007742	SHEET,SCRAPER BN-20	1
35	1000006524	SPRING,CAP FRONT VS-640	1
36	1000006825	SPRING,CAP SWING VS-640	2
37	1000007551	SPRING,CAP VS-640_01	1
38	1000007688	STAY,CIRCULAR PUMP BN-20	1
39	1000009118	STAY,ORIGIN SENSOR BN-20_01	1
40	1000007692	STAY,PUMP BN-20	1
41	1000008892	STAY,WIPE SENSOR BN-20	1
42	1000006522	STOPPER,CAP VS-640	1
43	22135349	STOPPER,PEN-HOLDER CM-24	4
44	1000002019	STOPPER,PUMP XC-540	1
45	1000002645	STOPPER,SHAFT CAP VP-540	2
46	1000002122	TUBE,EPDM ID2-OD4-100MM	2
47	1000006736	WIPER,HEAD FELT VS-640	1
48	1000006517	WIPER,HEAD VS-640	1
49	6701689050	ASSY,TUBING 3*350 BN-20	1
50	1000009437	SPRING,WIPE SENS BN-20	1

PARTS LIST -Supplemental Parts-

	Parts No.	Parts Name	qt.
S1	31029820	BUSH SET,ROLL 3*2 3C 50PCS	1
S2	31029101	BUSH,NB-19	1
S3	31289109AS	CUPSCREW SET,M3*4 NI 100 PCS.	23
S4	31299102AS	RIVET SET,NYLON P2655B 20 PCS.	2
S5	31409801AS	SADDLE,LOCKING WIRE LWS-0711Z 20P	1
S6	31019119	SCREW SET,BINDING M3*12 NI 100PCS	1
S7	31019115AS	SCREW SET,BINDING M3*4 3CBC 100 PCS	5
S8	31019116AS	SCREW SET,BINDING M3*6 3CBC 100 PCS	7
S9	31049119	SCREW SET,CAP M3*4 NI 20PCS.	2
S10	31199701AS	SCREW SET,SET WP M3*3 NI 20 PCS	2
S11	3000000181	TUBE,INK BK 2.2FAI	2

* qt. indicates the number of parts that is described in the figure.

Revised 3: Refer to the Service Information BN20-009

Refer to the Service Information BN20-009

Revised 5: Refer to the Service Information BN20-013

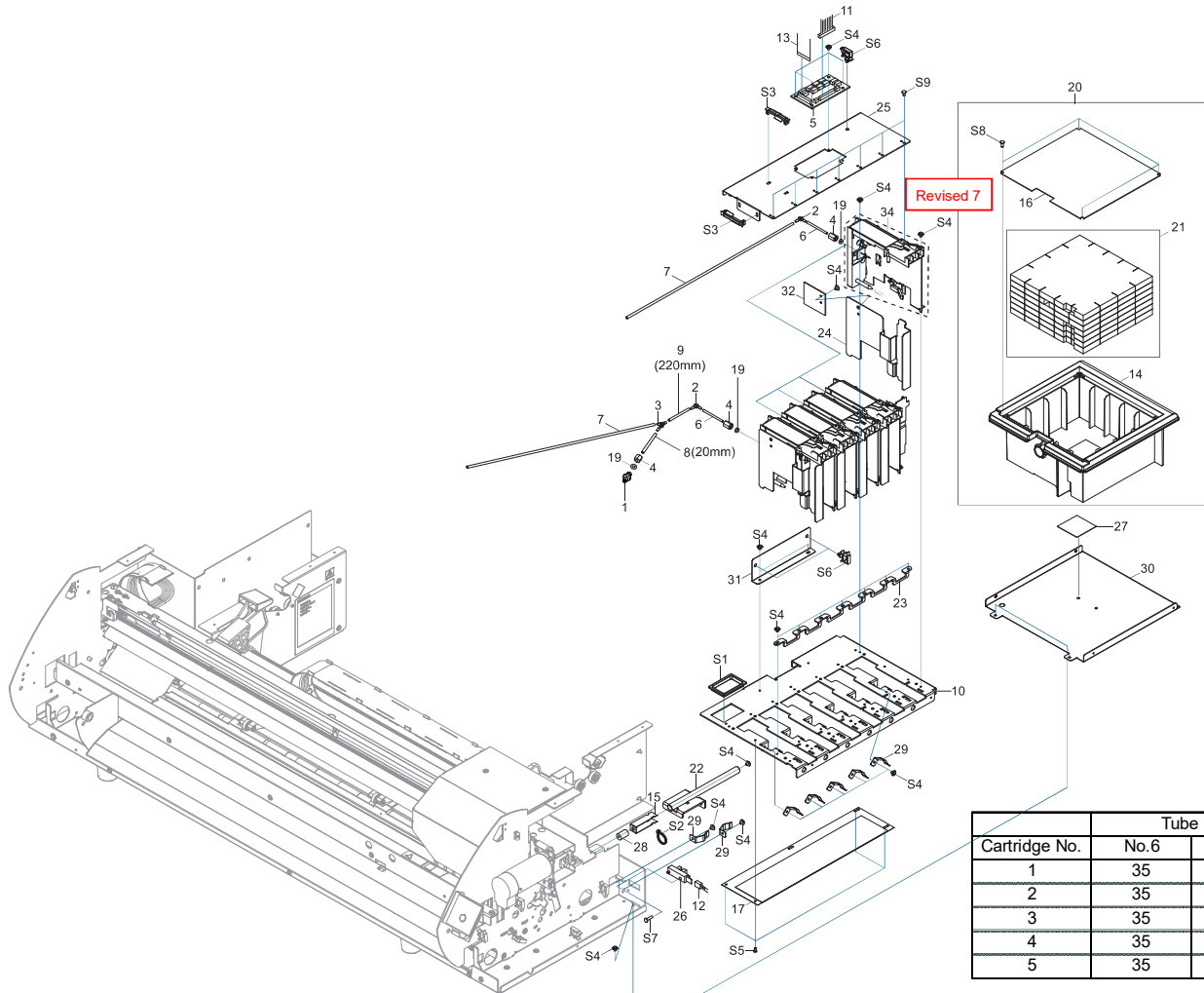
Revised 4 Refer to the Service Information BN20-010

Revised 2

Revised 4 Refer to the Service Information BN20-009

Revised 4 Refer to the Service Information BN20-010

1-7 INK SYSTEM



PARTS LIST -Main Parts-

Parts No.	Parts Name	qt.
1	1000004796 ADAPTER,JOINT 2-3FAI RS-540	1
2	1000008314 ADAPTER,JOINT 2L MCL-1	5
3	1000007744 ADAPTER,JUNCTION 2Y MCY-1	1
4	11909133 ADAPTER,SCREW 2FAI FJ-50	6
5	W701681220 ASSY,CARTRIDGE JUNCTION BOARD BN-2	1
6	22805479 ASSY,TUBING 2*100MM FJ-540	5
7	1000002059 ASSY,TUBING 2*1300MM XC-540	5
8	22805478 ASSY,TUBING 2*20MM FJ-540	1
9	1000000407 ASSY,TUBING 2*230MM IS-1000	1
10	1000008318 BASE,INK CARTRIDGE BN-20	1
11	1000007787 CABLE-ASSY,INK IC BN-20	1
12	1000007713 CABLE-ASSY,WIPER LIMIT SENS BN-20	1
13	1000007715 CABLE-CARD,25P1 1400L BB	1
14	1000008835 CASE,DRAIN TANK BN-20	1
15	1000008660 COVER,DRAIN PIPE BN-20	1
16	1000008836 COVER,DRAIN TANK BN-20	1
17	1000008623 COVER,INK CARTRIDGE UNDER BN-20	1
18	44659218 HOLDER,I/C SC-500	5
19	11659149 HOLDER,RING O 2FAI FJ-50	6
20	1000007723 ASSY,DRAIN BN-20	1
21	1000008938 ASSY,DRAIN PAD BN-20	1
22	1000008226 PIPE,DRAIN BOTTLE BN-20	1
23	1000008316 PLATE,BASE INKCARTRIDGE BN-20	1
24	1000006744 PLATE,HOLDER I/C VS-640	5

PARTS LIST -Main Parts-

Parts No.	Parts Name	qt.
25	1000008317 PLATE,INK JOINT BN-20	1
26	1000006689 SENSOR-INTERRUPTER,EE-SX4009-P1	1
27	1000008657 SHEET,DRAIN BN-20	1
28	1000008315 SHUTTER,DRAIN PIPE BN-20	1
29	22625103 SPRING,PRESS CARTRIDGE SP-300	7
30		
31	1000008169 STAY,INK CARTRIDGE BN-20	1
32	6701681300 ASSY,CARTRIDGE IC BOARD	5
33	24435109 TUBE,SILICONE 3*5*8 FJ-540	5
34	6700980300 ASSY,HOLDER I/C RS-540	5

*Revised 7 : Refer to the Service Information BN20-014

PARTS LIST -Supplemental Parts-

Parts No.	Parts Name	qt.
S1	31029901 BUSH,SQUARE SB-4025	1
S2	31329601AS CLAMP SET,INSULOK T-18S 100 PCS.	1
S3	3000000030 CLAMP,WIRE PRESS RFC-33V0	2
S4	31289109AS CUPSCREW SET,M3*4 NI 100 PCS.	33
S5	31299102AS RIVET SET,NYLON P2655B 20 PCS.	4
S6	31409801AS SADDLE,LOCKING WIRE LWS-0711Z 20P	3
S7	31019119 SCREW SET,BINDING M3*12 NI 100PCS	1
S8	31019703 SCREW,BINDING P-TIGHT M3*8 3C 100P	4
S9	31019801 SCREW,BINDING S-TIGHT M3*6 3C 100PCS	7

* qt. indicates the number of parts that is described in the figure.