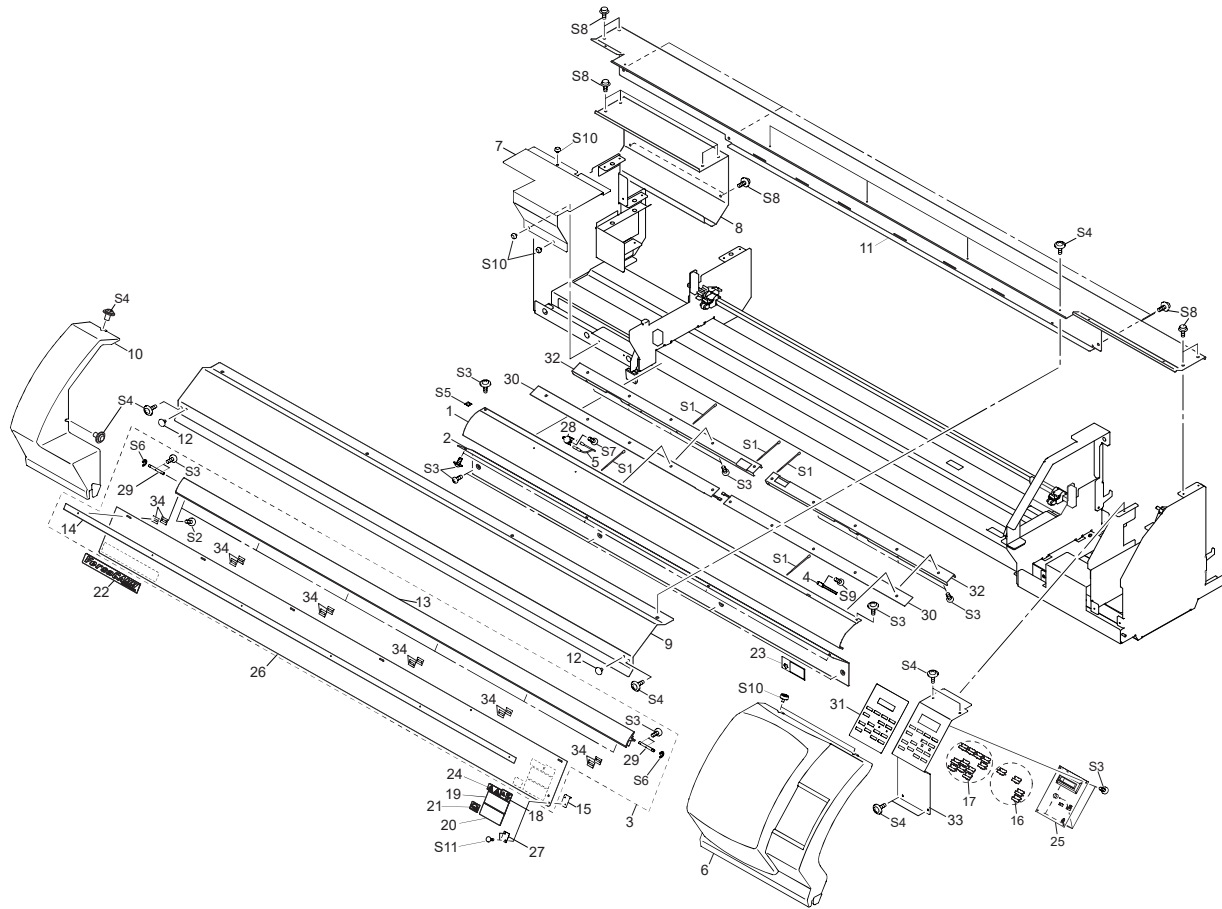


1 Structure & Spare Parts

1-1 COVER



PARTS LIST -Main Parts-

Parts No.	Parts Name
1	22095156-00 APRON,FRONT AL SP-540V
2	22095158-00 APRON,FRONT UNDER SP-540V
3	22805567-00 ASS'Y,FRONT COVER SP-540V
4	23415133-00 ASS'Y,THERMISTOR CABLE SP-300
5	23415112-00 ASS'Y,THERMOSTAT CABLE SP-300
6	22045135-00 COVER,INK SYSTEM SP-300
7	22045114-01 COVER,MAINTENANCE INKHEAD SP-300
8	22045371-00 COVER,INK CARTRIDGE SP-540V
9	22045376-00 COVER,RAIL F SP-540V
10	22045134-00 COVER,SIDE L SP-300
11	22045373-00 COVER, TOP SP-540V
12	12239406-00 CUSHION, TM-96-6
13	22195140-00 FRAME,COVER F SP-540V
14	21655310-00 HOLDER,COVER F SP-540V
15	21645106-00 HOOK,INT SW FJ-540
16	22495211-00 KEYPAD,DS-LD1H BLK
17	22495210-00 KEYPAD,DS-LX1H BLK
18	22535287-00 LABEL,CAUTION CARRIAGE #LA266
19	22535443-00 LABEL,MEDIA CLAMP SP-300
20	22535390-00 LABEL,EMERGENCY STOP #LA496
21	22535460-00 LABEL,ENERGY STAR COLOR #LA668
22	22535453-00 LABEL,VERSACAMM SP-300 #LA649
23	22535452-00 LABEL,VOLTAGE SW SP-300 #LA648
24	22535330-00 LABEL,WARNING SOL INK #LA396

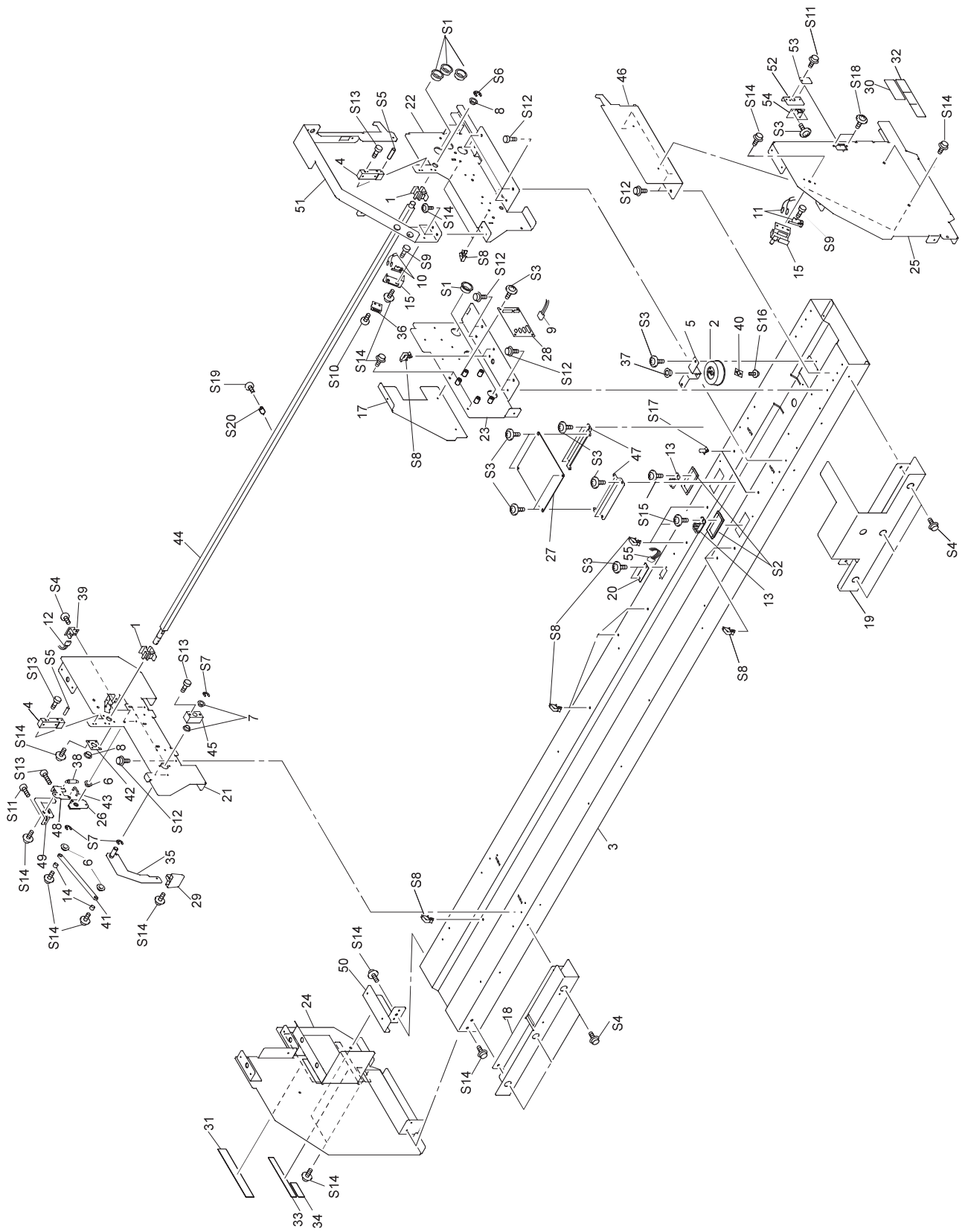
PARTS LIST -Main Parts-

Parts No.	Parts Name
25	W840605010 PANEL BOARD SP-300
26	22055690-00 PLATE,FRONT COVER SP-540V
27	22055356-00 PLATE,F COVER CM-500
28	15099124-00 SENSOR,US-602SXTLAS 65OFF 50ON
29	22155958-00 SHAFT,COVER F FJ-540
30	21475189-00 SHEET,HEATER RUBBER SP-540V
31	21475155-00 SHEET,PANEL SP-300
32	22715468-00 STAY,HEATER HOLDER F SP-540V
33	22715355-00 STAY,PANEL SP-300
34	21425110-00 WASHER,COVER FJ-50

PARTS LIST -Supplemental Parts-

Parts No.	Parts Name
S1	31329601-00 CLAMP,INSULOK T-18S
S2	31289112-00 CUPSCREW, M3*10 NI
S3	31289102-00 CUPSCREW, M3*6 NI
S4	31289111-00 CUPSCREW, M4*6 NI
S5	31279106-00 LABEL,CAUTION HOT SURF NO.778
S6	31149703-00 RING,E-RING ETW-4 UNI-C
S7	31019148-00 SCREW,BINDING M2.6*4 C
S8	31049169-00 SCREW,CAP M4*8 BC+PW4*10*0
S9	31089110-00 SCREW,PAN M3*4 C+PW
S10	31139103-00 SCREW,PLAPOINT M4*6 WH FE
S11	31019116-00 SCREW,BINDING M3*6 BC

1-2 FRAME



1-2 FRAME

PARTS LIST -Main Parts-

	Parts No.	Parts Name
1	21905192-00	ADAPTER,MEDIA CLAMP SP-540V
2	7520501000-00	ASS'Y,CAP BOTTLE 2 FJ-52
3	22845192-00	BASE,BOTTOM SP-540V
4	22845104-00	BASE,RAIL SP-300
5	21985140-00	BRACKET,INK CATCH TANK SP-540V
6	12159573-00	BUSH,80F-0603
7	12159563-00	BUSH,80F-1006
8	12159508-00	BUSH,SHAFT OILES 80F-1206
9	23415129-00	CABLE ASS'Y,FAN SP-300
10	23415113-00	CABLE ASS'Y,FRONT COVER SW SP-300
11	23415114-00	CABLE ASS'Y,MNT. COVER SW SP-300
12	23415126-00	CABLE ASS'Y,LOADING SENSOR SP-300
13	23415271-00	CABLE-ASSY,V SELECTOR SP-540V
14	21745109-00	COLLAR,LEVER FJ-540
15	22045186-00	COVER,INK SYSTEM SW SP-300
16	22025980-00	COVER,INT SW FJ-540
17	22045372-00	COVER,SCAN MOTOR SP-540V
18	22045374-00	COVER,UNDER L SP-540V
19	22045375-00	COVER,UNDER R SP-540V
20	W876705040-00	FAN JUNCTION BOARD SP-540V
21	22195145-00	FRAME,MIDDLE L SP-540V
22	22195146-00	FRAME,MIDDLE R SP-540V
23	22195105-00	FRAME,SCAN MOTOR SP-300
24	22195148-00	FRAME,SIDE L SP-540V
25	22195149-00	FRAME,SIDE R SP-540V
26	22305101-00	GUIDE,LEVER SP-300
27	W876705020-00	HEATER POWER BOARD SP-540V
28	W840605020-00	JUNCTION BOARD 1 SP-300
29	22485104-00	KNOB FJ-50
30	22535444-00	LABEL,READ MANUAL #LA637
31	22535441-00	LABEL,SET INK SP-300 #LA634
32	22535123-00	LABEL,STANDARD(131) NO.910
33	22535442-00	LABEL,USE ONLY ECO-SOL #LA635
34	22535330-00	LABEL,WARNING SOL INK #LA396
35	22485108-00	LEVER,CAM PINCH SP-300
36	12399102-00	MAGNET CATCH TL-105
37	22155763-00	OILES BUSH 80F-0806
38	22175105-00	PINCH ROLL SPRING
39	W840605080-00	PINCH U/D SENS BOARD SP-300
40	22055474-00	PLATE,INK CATCH TANK FJ-52
41	22055589-00	PLATE,LEVER LINK SP-300
42	22055598-00	PLATE,SQUARE SHAFT SUPPORT SP-300
43	22145393-00	SHAFT,JOINT PNC-960
44	22295302-00	SHAFT,SQUARE SP-540V
45	22035196-00	STAND,LEVER SP-300
46	22715347-00	STAY,FRAME SIDE R SP-300
47	22715467-00	STAY,HEATER BOARD SP-540V
48	22715351-00	STAY,LEVER ADJUSTOR SP-300
49	22715350-00	STAY,PINCH LEVER SP-300
50	22715348-00	STAY,INK CARTRIDGE SUPPORT SP-300
51	22785101-00	SUPPORT,FRAME R SP-300
52	22715465-00	STAY,EXT BOARD SP-540V
53	22055644-00	PLATE,CONNECTOR TS-30
54	W876705060-00	EXT BOARD SP-540V
55	23415272-00	CABLE ASS'Y,FAN JUNCTION SP-540V

PARTS LIST -Supplemental Parts-

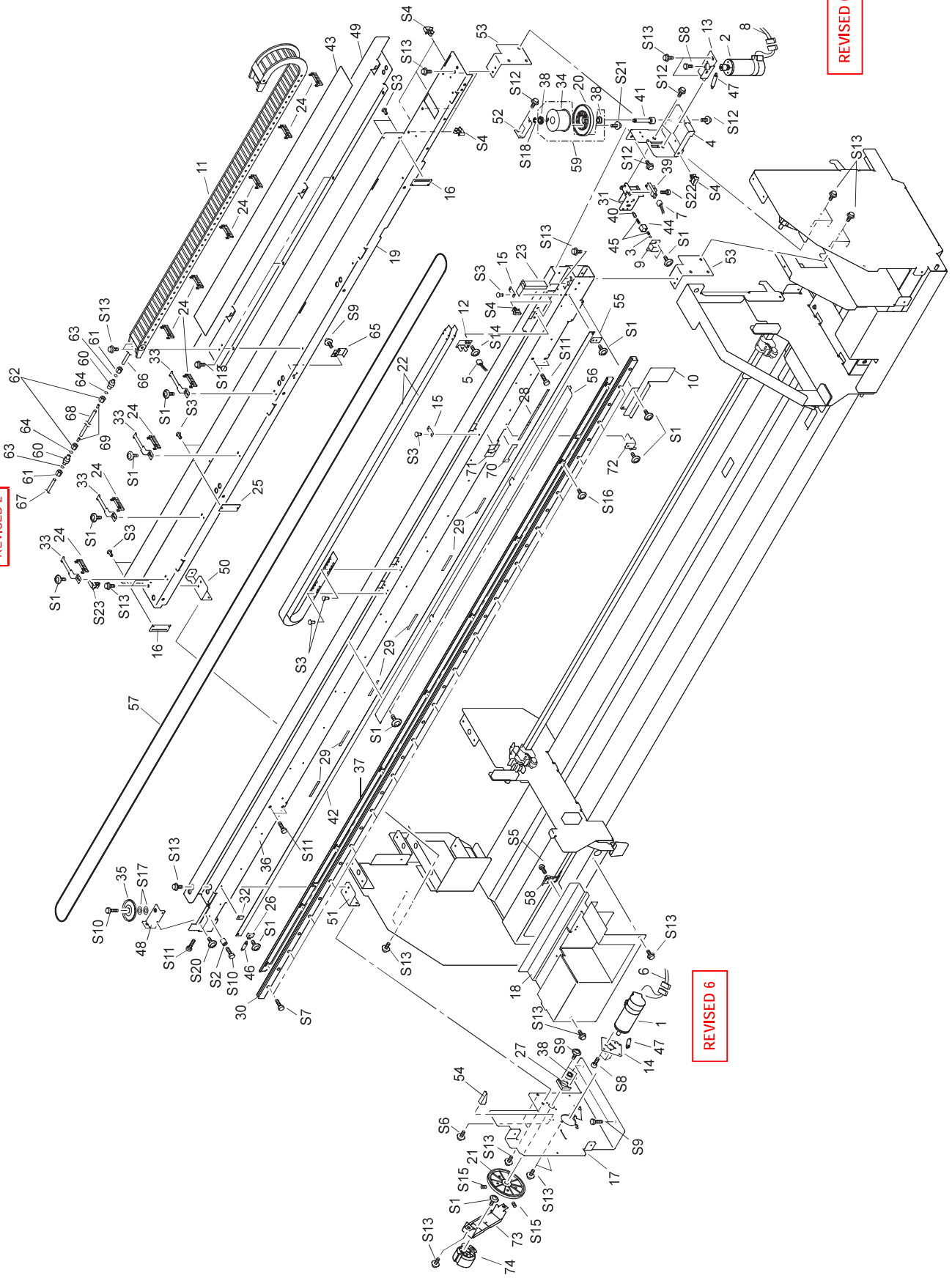
	Parts No.	Parts Name
S1	31029101-00	BUSH,NB-19
S2	31029106-00	BUSH,SQUARE SB-6025
S3	31289102-00	CUPSCREW, M3*6 NI
S4	31289111-00	CUPSCREW, M4*6 NI
S5	31119904-00	PIN,SPRING 2.5*8 SUS STRAIGHT
S6	31149706-00	RING,E-RING ETW-10 SUS
S7	31149705-00	RING,E-RING ETW-7 SUS
S8	31409801-00	SADDLE,LOCKING WIRE LWS-0711Z
S9	31019149-00	SCREW,BINDING M2.3*8 BC
S10	31019116-00	SCREW,BINDING M3*6 BC
S11	31049142-00	SCREW,CAP M3*6BC
S12	31049117-00	SCREW,CAP M4*12 BC+PW
S13	31049137-00	SCREW,CAP M4*25 BC
S14	31049169-00	SCREW,CAP M4*8 BC+PW4*10*0.8
S15	31089110-00	SCREW,PAN M3*4 C+PW
S16	31239125-00	SCREW,W-SEMS M3*8 SUS
S17	31369102-00	SPACER,PCB SUPPORT PCB-8S
S18	31289105-00	CUPSCREW, M3*6BC
S19	31049171-00	SCREW,CAP M3*12NI
S20	31129101-00	PIPE,POLYCA3*6*8

1-3 DRIVE UNIT

REVISED 2

REVISED 6

REVISED 6



1-3 DRIVE UNIT

PARTS LIST -Main Parts-

	Parts No.	Parts Name	
1	7876709020	ASS'Y, FEED MOTOR SP-540V	REVISED 6
2	7876709010	ASS'Y,SCAN MOTOR SP-540V	REVISED 6
3	11869103-00	BALL,4MM	
4	22845111-00	BASE,SCAN MOTOR SP-300	
5	23415123-00	CABLE ASS'Y,CUT CAR.ORG. SP-300	
6	23415124-00	CABLE ASS'Y,GRIT MOTOR SP-300	
7	23415127-00	CABLE ASS'Y,PRI. CAR. ORG. SP-300	
8	23415125-00	CABLE ASS'Y,SCAN MOTOR SP-300	
9	21365103-00	CASE,LOCK CJ-70	
10	22045130-00	COVER,CAP MOTOR SP-300	
11	12049377-00	COVER,TKPO180-2B R50-63	
12	W840605070-00	CUT ORIGIN BOARD SP-300	
13	21995122-00	FLANGE,MOTOR FJ-540	
14	21995118-00	FLANGE,MOTOR SCAN CX-500	
15	W8406050C0-00	FLEX1 SP-300	
16	W8406050D0-00	FLEX2 SP-300	
17	22195144-00	FRAME,FEED MOTOR SP-540V	
18	22195108-01	FRAME,SUPPORT AUTO CUTTER SP-300	
19	22195150-00	FRAME,RAIL SUPPORT SP-540V	
20	21685149-00	GEAR,H235S20(B8)T2	
21	21685128-00	GEAR,H300 S10(B6C16POM)	
22	22305109-00	GUIDE,CABLE FLEX-CUT SP-540V	
23	22305103-00	GUIDE,CABLE CARD SP-300	
24	22135559-00	GUIDE,TUBE 8 FJ-500	
25	W876705060-00	FLEX3 SP-540V	
26	21655131-00	HOLDER,LINEAR SCALE CJ-70	
27	22115121-00	HOUSING,R-BEARING FRAME FJ-540	
28	22535388-00	LABEL,G-ROLLER 170 CJ-540 #LA487	
29	22535387-00	LABEL,G-ROLLER 50 CJ-540 #LA486	
30	21895169-00	L-BEARING,LWES15C3R2160QE	
31	21345111-00	LOCK,STAY SP-540V	
32	22055316-00	PLATE,LINEAR SCALE CJ-70	
33	22055591-00	PLATE,TUBE GUIDE SP-300	
34	21975157-00	PULLEY,HD48.46S16(B35C39.5 F53)	
35	21975154-00	PULLEY,UD49.2S4(B4.6C6.6)	
36	22645127-00	RAIL,GUIDE SP-540V	
37	22645129-00	RAIL,LINEAR SCALE SP-540V	
38	22175815-00	BEARING F8-1622	
39	15229506-00	SENSOR INTERRUPTER,GP1A05A5	
40	22295117-00	SHAFT,LOCK CJ-70	
41	22155963-00	SHAFT,PULLEY FJ-540	
42	21475188-00	SHEET,LINEAR SCALE SP-540V	
43	21475187-00	SHEET,RAIL CABLE SP-540V	
44	22185101-00	SLIDER,LOCK CJ-70	
45	22175134-00	SPRING,A CJ-70	
46	22175122-00	SPRING,BACKUP PNC-960	
47	22175157-00	SPRING,C P-ROLLER CM-500	
48	22035172-00	STAND,PULLEY SP-300	
49	22715462-00	STAY,COVER FLEX CABLE SP-540V	
50	22715361-00	STAY,GUIDE RAIL LB SP-300	
51	22715379-00	STAY,GUIDE RAIL LF SP-300	
52	22715363-00	STAY,PULLEY SHAFT SP-300	
53	22715356-00	STAY,GUIDE RAIL SUPPORT SP-300	
54	22135346-00	STOPPER,CAM CM-500	
55	22135441-00	STOPPER,LINEAR SCALE FJ-540	
56	22785115-00	SUPPORT,CABLE SP-540V	
57	21945149-00	WIRE,SCAN DRIVE SP-540V	
58	23415114-00	CABLE-ASS'Y,MAINT-COVER SW SP-300	
59	22805471-00	ASS'Y,PULLEY HD48.46S16 FJ-540	
60	11909168	ADAPTER,TUBE 2-3FAI FJ-540	
61	11909133	ADAPTER,SCREW 2FAI FJ-50	
62	11909167-00	ADAPTER,SCREW 3FAI FJ-540	
63	11659149	HOLDER,RING O 2FAI FJ-50	
64	11659249-00	HOLDER,RING O 3FAI FJ-540	
65	22055697-00	PLATE,SHAFT SQUARE SP-540V	
66	22805555-00	ASS'Y,TUBING 2*1600MM SP-540V	
67	22805479-00	ASS'Y,TUBING 2*100MM FJ-540	REVISED 2

PARTS LIST -Main Parts-

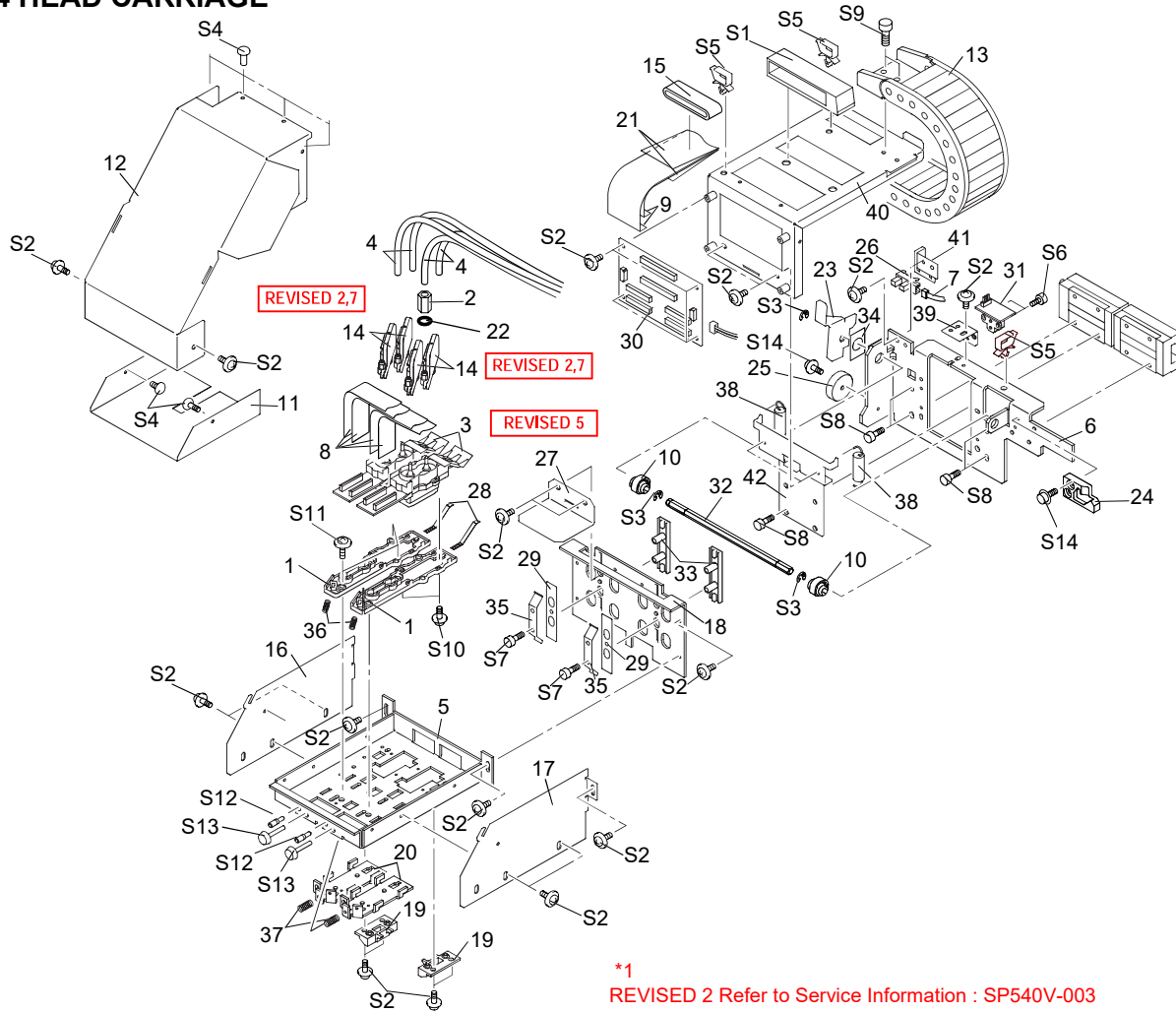
	Parts No.	Parts Name
68	22805578-00	ASS'Y TUBING 3*1000MM SP-540V
69	22805478-00	ASS'Y TUBING 2*20MM FJ-540
70	22535517-00	LABEL,PINCH ROLL SP-540V #LA740
71	22535518-00	LABEL,PINCH ARROW SP-50V #LA739
72	22715469-00	STAY,HOLD SHAFT SQUARE SP-540V
73	22715466-00	STAY,FA-CODER SP-540V
74	25095120-00	GRIT ENCODER TS5217N561 FJ-540

PARTS LIST -Supplemental Parts-

	Parts No.	Parts Name
S1	31289102-00	CUPSCREW, M3*6 NI
S2	31129102-00	PIPE,POLYCA 4*8*10
S3	31299102-00	RIVET,NYLON P2655B
S4	31409801-00	SADDLE,LOCKING WIRE LWS-0711Z
S5	31019149-00	SCREW,BINDING M2.3*8 BC
S6	31019703-00	SCREW,BINDING P-TIGHT 3*8 BC
S7	31049155-00	SCREW,CAP M3*12 BC WSH 3*6*0.5
S8	31049170-00	SCREW,CAP M3*8 NI
S9	31049117-00	SCREW,CAP M4*12 BC+PW
S10	31049174-00	SCREW,CAP M4*15 NI
S11	31049137-00	SCREW,CAP M4*25 BC
S12	31069104-00	SCREW,CAP M4*6+FL C
S13	31049169-00	SCREW,CAP M4*8 BC+PW4*10*0.8
S14	31089110-00	SCREW,PAN M3*4 C+PW
S15	31199701-00	SCREW,SET WP M3*3 C
S16	31239103-00	SCREW,W-SEMS M3*8 BC+PW12*1
S17	31249217-00	WASHER,PLAIN 4*8*1 C
S18	31149704-00	RING,E ETW-6 SUS
S20	31289108-00	CUPSCREW, M3*8 NI
S21	31289107-00	CUPSCREW, M3*12 NI
S22	31049112-00	SCREW,CAP M4*10 BC
S23	31409811-00	SADDLE,LOCKING WIRE LWS-1211Z

*1 Revised 6 Refer to the Service Information SP-540V-007.

1-4 HEAD CARRIAGE



*1
 REVISED 2 Refer to Service Information : SP540V-003
 REVISED 7 Refer to Service Information: SP540-008
 *2
 REVISED 5 Refer to Service Information : SP540V-004

PARTS LIST -Main Parts-

Parts No.	Parts Name
1	21905166-00 ADAPTER,HEAD FJ-540
2	11909133-00 ADAPTER,SCREW 2FAI FJ-50
3	22805470-00 ASSY,HEAD INKJET SOL SJ-540
4	22805555-00 ASSY,TUBING 2*1600MM SP-540V
5	22845193-00 BASE,CARRIAGE AL SP-540V
6	22845194-00 BASE,CARRIAGE HOLDER SP-540V
7	23415274-00 CABLE-ASSY,HEAD U/D SENS SP-540V
8	23475214-00 CABLE-CARD,21P1 180L BB
9	23475240-00 CABLE-CARD,36P1 2670L BB
10	21775103-00 CAM,CARRIAGE FJ-540
11	22045140-00 COVER,HEAD BOARD SP-300
12	22045365-00 COVER,PRINTING CARRIAGE SP-540V
13	12049138-00 COVER,TKPO180-2B R50-44
14	6081181200 ASSY,INK DAMPER 3 2FAI SJ-540 REVISED 2,7 *1
15	12399352-00 FILTER(E) FRC-45-12-6.5
16	22195141-00 FRAME,CARRIAGE SIDE L SP-540V
17	22195142-00 FRAME,CARRIAGE SIDE R SP-540V
18	22195143-00 FRAME,CARRIAGE U/D SP-540V
19	22135618-00 GUIDE,CARRIAGE CAP FJ-540
20	22135440-00 GUIDE,HEAD AL FJ-540
21	21655311-00 HOLDER,CABLE SP-540V
22	11659149-00 HOLDER,RING O 2FAI FJ-50
23	22485111-00 LEVER,CARRIAGE SP-540V
24	21345105-00 LOCK,CJ-500
25	22395108-00 MAGNET,CJ-500
26	15229705-00 PHOTO INTERRUPTER GP1A71A1
27	1000000134 PLATE,DAMPER SP-540V REVISED 5 *2
28	22055547-00 PLATE,GND FJ-540
29	22055548-00 PLATE,SLIDER CARRIAGE FJ-540
30	W8406050F0-00 PRINT CARRIAGE BOARD SP-300

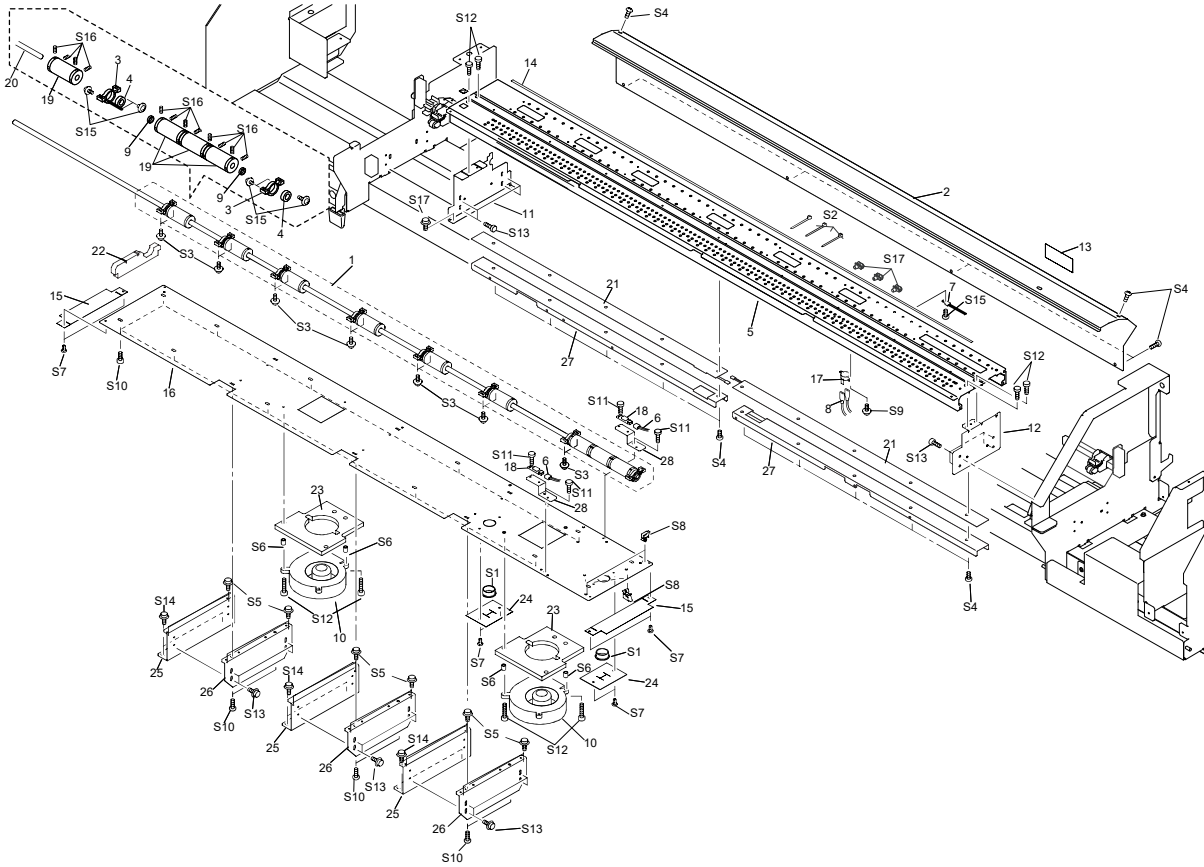
PARTS LIST -Main Parts-

Parts No.	Parts Name
31	W840605050-00 PRINT LINEAR ENCORDER BOARD SP-300
32	22295303-00 SHAFT,HEXAGON CARRIAGE SP-540V
33	22185127-00 SLIDER,CARRIAGE FJ-540
34	22165216-00 SPACER,U/D LEVER FJ-540
35	22175159-00 SPRING,CARRIAGE SIDE FJ-50
36	22175520-00 SPRING,HEAD ADJUST 500 FJ-540
37	22175519-00 SPRING,HEAD PLESS 500 FJ-540
38	22625109-00 SPRING,PULL CARRIAGE 3500 FJ-540
39	22715358-00 STAY,ENCORDER SENSOR SP-300
40	22715362-00 STAY,HOLDER CARRIAGEBOARD SP-540V
41	22715472-00 STAY,SENSOR CARRIAGE SP-540V
42	22785116-00 SUPPORT,CARRIAGE BOARD SP-540V

PARTS LIST -Supplemental Parts-

Parts No.	Parts Name
S1	31379101-00 CLAMP,FLAT CABLE FCS-50P
S2	31289102-00 CUPSCREW, M3*6 NI
S3	31149703-00 RING,E-RING ETW-4 UNI-C
S4	31299102-00 RIVET,NYLON P2655B
S5	31409801-00 SADDLE,LOCKING WIRE LWS-0711Z
S6	31019148-00 SCREW,BINDING M2.6*4 C
S7	31799103-00 SCREW,CAP M3*15 NI
S8	31069104-00 SCREW,CAP M4*6+FL C
S9	31049169-00 SCREW,CAP M4*8 BC+PW4*10*0.8
S10	31679902-00 SCREW,C-SEMS M2*8 C
S11	31089121-00 SCREW,PAN M2.3*8 NI +PW2*6*0.4
S12	31199905-00 SCREW,SET CONE M3*16 BC
S13	31179908-00 SCREW,UREA N-1 M3*20 WH
S14	31239114-00 SCREW,W-SEMS M3*8 C

1-5 BASE FRAME



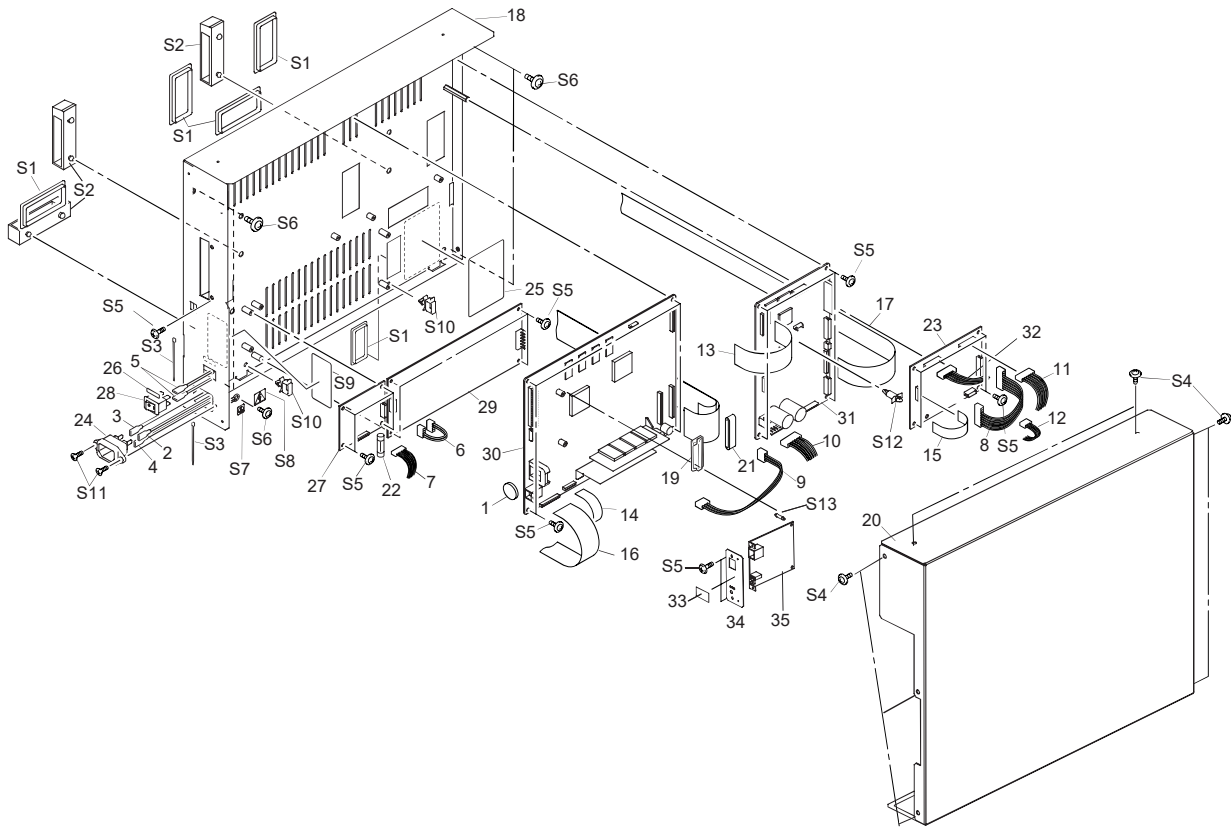
PARTS LIST -Main Parts-

Parts No.	Parts Name
1	22805570-00 ASS'Y, GRIT ROLLER SP-540V
2	22095157-00 APRON,B SP-540V
3	22115106-00 BEARING HOUSING A 211-106
4	22175870-00 BEARING 10-19ZZ
5	22005144-00 BED,SP-540V
6	23415118-00 CABLE ASSY,PAPER SENSOR SP-300
7	23415133-00 CABLE-ASSY,THERMISTOR SP-300
8	23415112-00 CABLE-ASSY,THERMOSTAT SP-300
9	22165165-00 COLLAR
10	21715110-00 FAN SCBD24H7-016
11	22195147-00 FRAME,SIDE BED L SP-540V
12	22195110-00 FRAME,SIDE BED R SP-300
13	22535452-00 LABEL,VOLTAGE SW SP-300 #LA648
14	21545137-00 PAD,CUTTER CM-500
15	22055599-00 PLATE,SHUTTER END SP-300
16	22055698-00 PLATE,SHUTTER SP-540V
17	15099124-00 SENSOR,US-602SXTLAS 65OFF 50ON
18	15099115-00 SENSOR-INTERRUPTER GP2A25NJ
19	22075126-00 SET,GRIT ROLLER CJ-540 *include 9 Rollers
20	22295301-00 SHAFT,FEED SP-540V
21	21475189-00 SHEET,HEATER RUBBER SP-540V
22	21625106-00 SHUTTER,BED SP-540V
23	22125432-00 SHUTTER,FAN FJ-540
24	21625103-00 SHUTTER,HEATER CORD SP-300
25	22165229-00 SPACER,BED LOWER SP-540V
26	22165230-00 SPACER,BED UPPER SP-540V
27	22715468-00 STAY,HEATER HOLDER SP-540V
28	22715352-00 STAY,PAPER SENSOR SP-300

PARTS LIST -Supplemental Parts-

Parts No.	Parts Name
S1	31029101-00 BUSH,NB-19
S2	31329601-00 CLAMP,INSULOK T-18S
S3	31289112-00 CUPSCREW, M3*10 NI
S4	31289102-00 CUPSCREW, M3*6 NI
S5	31179106-00 SCREW,JACK UP SP-540V
S6	31129102-00 PIPE,POLYCA 4*8*10
S7	31299102-00 RIVET,NYLON P2655B
S8	31409801-00 SADDLE,LOCKING WIRE LWS-0711Z
S9	31019148-00 SCREW,BINDING M2.6*4 C
S10	31019703-00 SCREW,BINDING P-TIGHT 3*8 BC
S11	31049170-00 SCREW,CAP M3*8 NI
S12	31049137-00 SCREW,CAP M4*25 BC
S13	31049169-00 SCREW,CAP M4*8 BC+PW4*10*0.8
S14	31049117-00 SCREW,CAP M4*12 BC+PW
S15	31089110-00 SCREW,PAN M3*4 C+PW
S16	31199704-00 SCREW,SET WP M3*8 BC
S17	31329501-00 CLAMP,PUSH MOUNT RT30SSF5

1-6 CHASSIS



PARTS LIST -Main Parts-

Parts No.	Parts Name
1	15009101-00 BATTERY CR2032
2	23505631-00 CABLE-ASS'Y JUNBI A PC-600
3	23505632-00 CABLE-ASS'Y JUNBI B PC-600
4	23415268-00 CABLE-ASS'Y AC GROUND GREEN SP-540V
5	23415116-00 CABLE ASS'Y,JUNBI D SP-300
6	23415269-00 CABLE-ASSY,AC SWPS POWER SP-540V
7	23415270-00 CABLE-ASSY POWER H AC SP-540V
8	23415111-00 CABLE ASS'Y,POWER H DC SP-300
9	23415117-00 CABLE ASS'Y,POWER MAIN SP-300
10	23415115-00 CABLE ASS'Y,POWER SERVO SP-300
11	23415109-00 CABLE ASS'Y,RELAY JUNCTION SP-300
12	23415132-00 CABLE ASS'Y,THERMO JUNC. SP-300
13	23475197-00 CABLE-CARD 25P1 105L BB
14	23475211-00 CABLE-CARD,14P1 350L BB
15	23475217-00 CABLE-CARD,18P1 80L BB
16	23475212-00 CABLE-CARD,24P1 600L BB
17	23475112-00 CABLE-CARD,26P1 700L BB
18	22815156-00 CHASSIS,SP-540V
19	11769118-00 CLAMP,FCM2-S6-14
20	22045369-00 COVER,CHASSIS SP-540V
21	12399352-00 FILTER(E) FRC-45-12-6.5
22	12559105-00 FUSE,5X20 21706.3 6.3A/250V
23	W876705010-00 HEATER CONTROL BOARD SP-540V
24	13429702-00 INLET AC-P01CF01 15A250V
25	22535257-00 LABEL,CAUTION VOLTAGE #LA167
26	22535117-00 LABEL,POWER CM-500 NO.893
27	W876705030-00 POWER JUNCTION BOARD SP-540V
28	13129170-00 POWER SW AJ7201B
29	12429114-00 POWER UNIT,ZWS150PAF-36/J
30	7876705100-00 SP-540V MAIN BOARD ASS'Y
31	7840605600-00 SP-300 SERVO BOARD
32	23415273-00 CABLE-ASSY,EXT JUNCTION SP-540V

PARTS LIST -Main Parts-

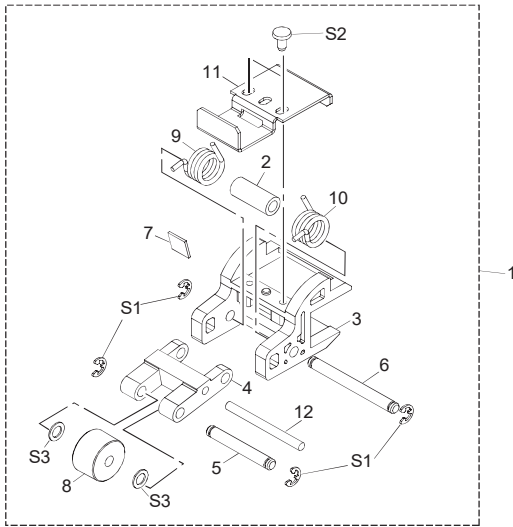
Parts No.	Parts Name
33	21475147-00 SHEET,COATING SEAL FJ-540
34	22055695-00 PLATE,NET CARD SP-540V
35	22805353-00 ASS'Y,NETWORK BOARD FJ-500

PARTS LIST -Supplemental Parts-

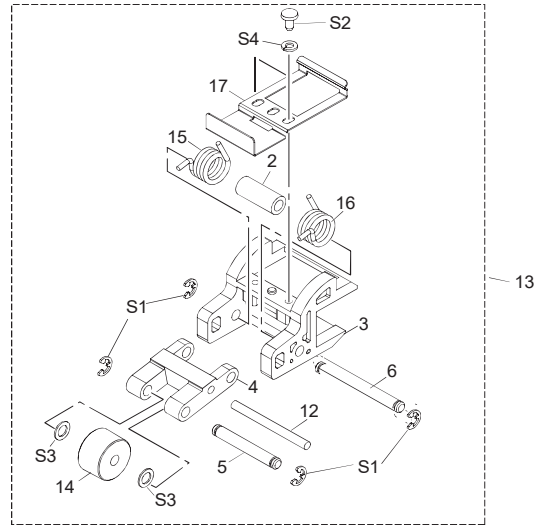
Parts No.	Parts Name
S1	31029106-00 BUSH,SQUARE SB-6025
S2	31379101-00 CLAMP,FLAT CABLE FCS-50P
S3	31329601-00 CLAMP,INSULOK T-18S
S4	31289105-00 CUPSCREW, M3*6 BC
S5	31289102-00 CUPSCREW, M3*6 NI
S6	31289111-00 CUPSCREW, M4*6 NI
S7	31279116-00 LABEL,EARTH MARK-1 NO.E-580
S8	31279121-00 LABEL,FLASH-LIGHTING NO.E-582
S9	31279191-00 LABEL,WARNING FUSE REPLACE #347
S10	31409801-00 SADDLE,LOCKING WIRE LWS-0711Z
S11	31169103-00 SCREW,FLAT M3*6 BC
S12	31369101-00 SPACER,PCB SUPPORT PCB-8L
S13	31209118-00 SPACER,WPCS-12S-4.0

1-7 PINCH ROLLER

<Right/Left Pinch Roller **REVISED 1**>



<Center Pinch Roller>



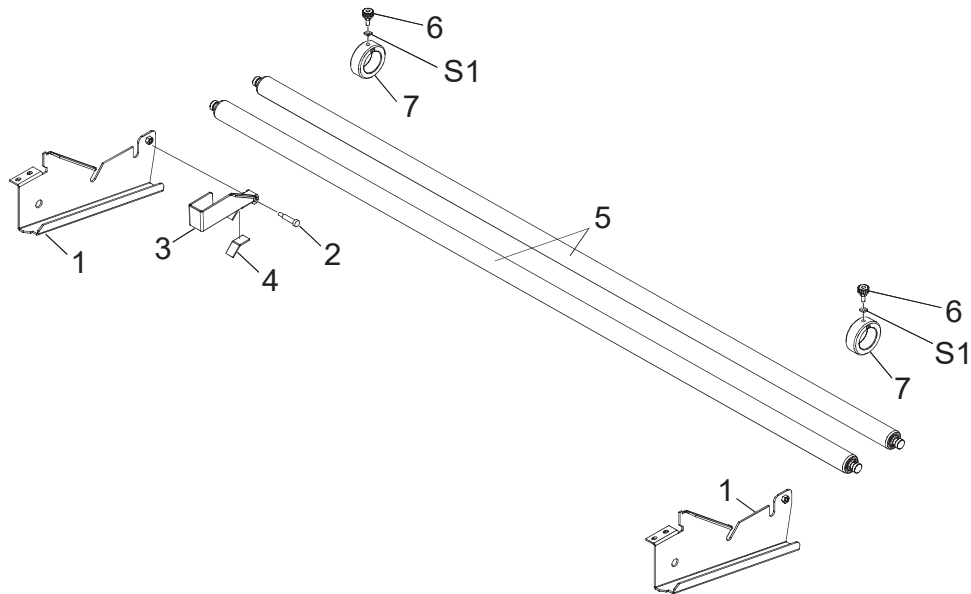
PARTS LIST -Main Parts-

	Parts No.	Parts Name
1	22805581-00	ASS'Y, PINCH ROLLER L/R SP-540V REVISED 1
2	21745101-00	COLLAR,P-ROLLER PNC-960
3	22195153-00	FRAME,PINCH ROLL SP-540V
4	22145416-00	LEVER,P-ROLLER PNC-960
5	22145831-00	PIN NO.1 (214-831)
6	22145832-00	PIN NO.2 (214-832)
7	22055264-00	PLATE,GUIDE P PNC-960
8	21565102-00	P-ROLLER TD16S4(B10) TYPE2
9	22625101-00	SPRING,PINCH LEFT SP-300
10	22625102-00	SPRING,PINCH RIGHT SP-300
11	22715471-00	STAY,PINCH SENSOR SP-540V
12	11539104-00	PIN 3*35 SUS M6
13	7876701500-0	ASS'Y, PINCH ROLLER C SP-540V
14	21565103-00	P-ROLLER FD16S4(B10) TYPE2
15	22625120-00	SPRING,PINCH CENTER LEFT SP-540V
16	22625121-00	SPRING,PINCH CENTER RIGHT SP-540V
17	22715461-00	STAY,PINCH CENTER SP-540V

PARTS LIST -Supplemental Parts-

	Parts No.	Parts Name
S1	31149702-00	RING,E-RING ETW-3 UNI-C
S2	31019702-00	SCREW,BINDING P-TIGHT 3*6 BC
S3	31249211-00	WASHER,PLAIN 4.3*7*0.5 C
S4	31249303-00	WASHER,SPRING M3 C

1-8 STAY ROLL



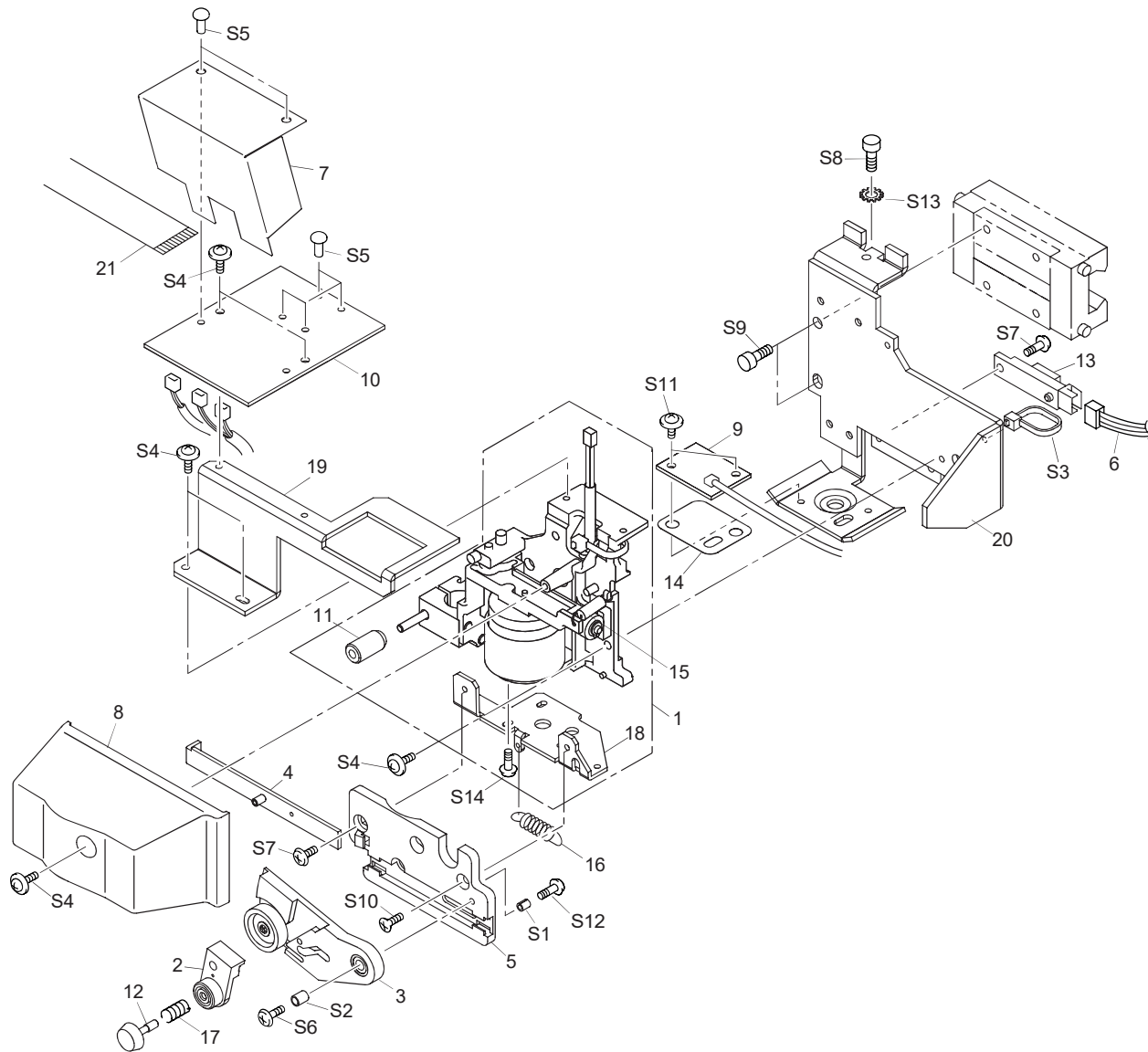
PARTS LIST -Main Parts-

	Parts No.	Parts Name
1	22145200-00	ARM,SP-300
2	21815106-00	BOLT,SHOULDER PNS-501
3	22485107-00	LEVER,BRAKE SP-300
4	21545139-00	PAD,BRAKE PNS-501
5	22295309-00	SHAFT,SHEET SP-540V
6	7498805000-00	ASS'Y, STOPPER SCREW PNS-501
7	22135362-00	STOPPER PNS-501

PARTS LIST -Supplemental Parts-

	Parts No.	Parts Name
S1	31109603-00	NUT, SQUARE M5

1-9 TOOL CARRIAGE



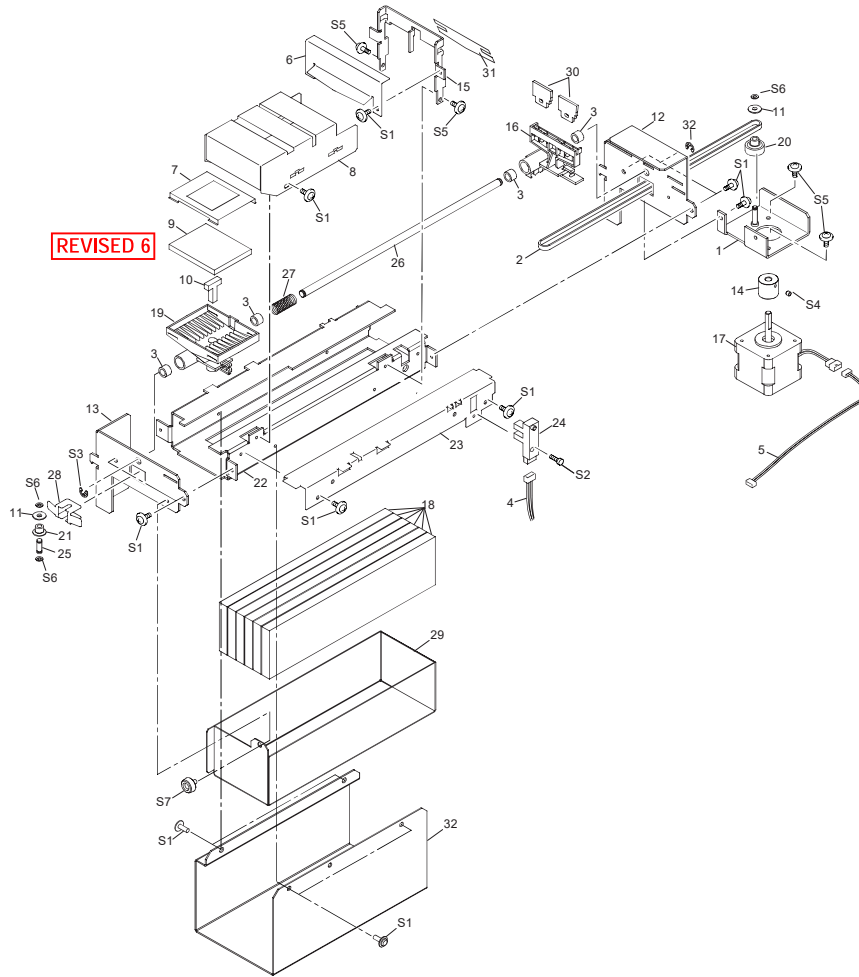
PARTS LIST -Main Parts-

Parts No.	Parts Name
1	22805571-00 ASS'Y CARRIAGE SP-300
2	22805292-00 ASS'Y, CLAMP BLADE CM-500
3	22805291-00 ASS'Y, HOLDER BLADE CM-500
4	22805287-00 ASS'Y, PLATE CAM SLIDE CM-500
5	7488739000-00 BASE CUTTER CJ-500
6	23415119-00 CABLE ASS'Y,PINCH SENSOR SP-300
7	22045137-00 COVER,CARRIAGE BOARD SP-300
8	22025269-00 COVER,CARRIAGE CM-500
9	W840605060-00 CROP MARK BOARD SP-300
10	W8406050E0-00 CUT CARRIAGE BOARD SP-300
11	22285503-00 NUT,PENHOLDER
12	21495115-00 SCREW,BLADE SET CM-500
13	15099115-00 SENSOR-INTERRUPTER GP2A25NJ
14	21475148-00 SHEET,FILTER CROP CJ-500
15	22175122-00 SPRING,BACKUP PNC-960
16	22175154-00 SPRING,BLADE UP CM-500
17	22175155-00 SPRING,SCREW CM-500
18	22715168-00 STAY,AUTO CUTTER 2 CM-500
19	22715463-00 STAY,CUT CARRIAGE BOARD SP-540V
20	22715464-00 STAY,CUT CARRIAGE HOLDER SP-540V
21	23475238-00 CABLE-CARD,15P1 2570L BB

PARTS LIST -Supplemental Parts-

Parts No.	Parts Name
S1	31029801-00 BUSH,ROLL 2*4
S2	31029803-00 BUSH,ROLL 3*5
S3	31329601-00 CLAMP,INSULOK T-18S
S4	31289102-00 CUPSCREW, M3*6 NI
S5	31299102-00 RIVET,NYLON P2655B
S6	31019118-00 SCREW,BINDING M3*10 BC
S7	31019116-00 SCREW,BINDING M3*6 BC
S8	31049117-00 SCREW,CAP M4*12 BC+PW
S9	31049169-00 SCREW,CAP M4*8 BC+PW4*10*0.8
S10	31169103-00 SCREW,FLAT M3*6 BC
S11	31089110-00 SCREW,PAN M3*4 C+PW
S12	31229103-00 SCREW,TRUSS M2*6 BC
S13	31249402-00 WASHER,EXTERNAL TOOTH M4 C
S14	31019112-00 SCREW,BINDING M2.6*4 BC

1-10 WIPER SYSTEM



* REVISED 6 Refer to Service Information : SP540-006

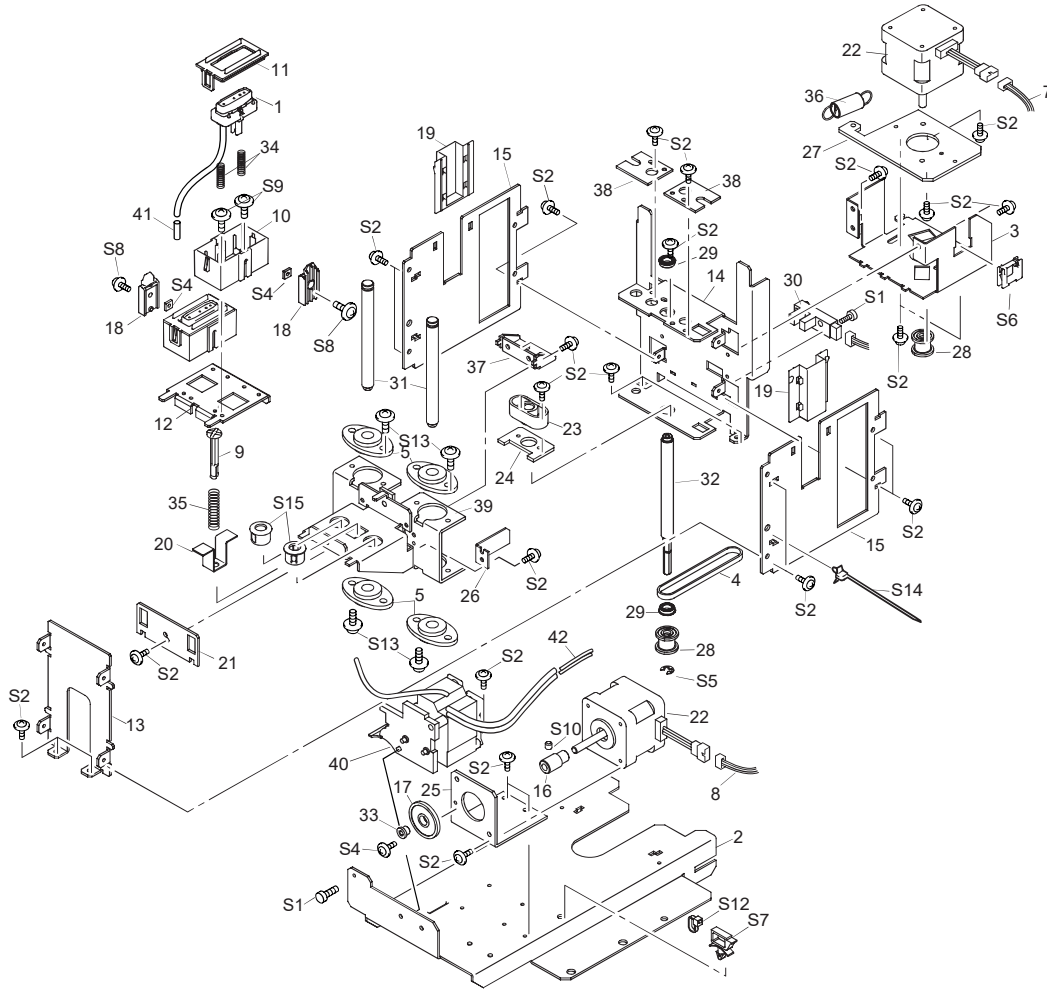
PARTS LIST -Main Parts-

Parts No.	Parts Name
1	22845107-00 BASE,WIPER MOTOR SP-300
2	11929139-00 BELT,520P2M4-530
3	12159536-00 BUSH,B-S6-17
4	23415128-00 CABLE ASS'Y,WIPER SENOR SP-300
5	23415120-00 CABLE ASS'Y,WIPER MOTOR SP-300
6	22045141-00 COVER,SCRAPER SP-300
7	22045129-00 COVER,SERGE MIST SP-300
8	22045128-00 COVER,WIPER SP-300
9	1000000416 FILTER(M),SERGE MIST 2 SP-300 REVISED 6
10	22275120-00 FILTER(M),SERGE MIST UNDER SP-300
11	21995104-00 FLANGE,PULLEY STX-7
12	22195113-00 FRAME,WIPER B SP-300
13	22195151-00 FRAME,WIPER F SP-540V
14	21685144-00 GEAR,S53S5(B15)
15	21655263-00 HOLDER,SCRAPER SP-300
16	21655245-00 HOLDER,WIPER FJ-540
17	22435106-00 MOTOR,103-593-1041
18	21545195-00 PAD,WIPER UNDER TYPE2 SP-300
19	22055601-00 PLATE,SERGE MIST SP-300
20	21975124-00 PULLEY,T14P2S4 + GEAR,S53
21	21975123-00 PULLEY,WD6.94S9
22	22645128-00 RAIL,WIPER GUIDE SP-540V
23	22645115-00 RAIL,WIPER R SP-300
24	15229506-00 SENSOR INTERRUPTER,GP1A05A5
25	22295132-00 SHAFT,IDLE PULLEY STX-7
26	22295267-00 SHAFT,WIPER SP-300
27	22625105-00 SPRING,SET SERGE MIST SP-300
28	22175140-00 SPRING,TENSHONER STX-7
29	21445114-00 TRAY,WIPER UNDER SP-540V
30	11379105-00 WIPER,HEAD ASP FJ-50
31	21375107-00 WIPER,SCRAPER FJ-540
32	21985139-00 BRACKET, WIPE UNDER SP-540V

PARTS LIST -Supplemental Parts-

Parts No.	Parts Name
S1	31289108-00 CUPSCREW, M3*8 NI
S2	31049107-00 SCREW,CAP M3*12 BC
S3	31149703-00 RING,E-RING ETW-4 UNI-C
S4	31199701-00 SCREW,SET WP M3*3 C
S5	31239101-00 SCREW,W-SEMS M3*6 BC
S6	31249952-00 WASHER,POLYSLIDER 2.6*5*.5 CUT
S7	31139103-00 SCREW,PLAPOINT M4*6 WH FE

1-11 PUMP SYSTEM



PARTS LIST -Main Parts-

Parts No.	Parts Name
1	12809448-00 ASS'Y,CAP-TOP FJ-540
2	22845109-00 BASE,BOTTOM CAP SP-300
3	22845108-00 BASE, TABLE MOTOR CAP SP-300
4	21925137-00 BELT,166P2M4-530
5	12529101-00 BUSH,80FL-08
7	23415121-00 CABLE ASS'Y,CAP MOTOR SP-300
8	23415122-00 CABLE ASS'Y,PUMP MOTOR SP-300
9	22335146-00 CAP,T-SPRING FJ-540
10	21365121-00 CASE,CAP-TOP FJ-540
11	22025671-00 COVER,CAP-CASE FJ-540
12	22195152-00 FRAME,BACKUP CAP TYPE2 SP-300
13	22195116-00 FRAME,FRONT CAP SP-300
14	22195114-00 FRAME,MAIN CAP SP-300
15	22195115-00 FRAME,SIDE CAP SP-300
16	21685122-00 GEAR,S10S20
17	21685120-00 GEAR,S34S4.3
18	22135616-00 GUIDE,CAP-CASE FJ-540
19	22135614-00 GUIDE,SIDE FRAME FJ-540
20	21655264-00 HOLDER,T-SPRING SP-300
21	21645109-00 HOOK,CAP CASE TYPE2 SP-300
22	22435106-00 MOTOR,103-593-1041
23	21575126-00 NUT, TABLE FJ-540
24	22055602-00 PLATE,NUT SP-300
25	22055596-00 PLATE,PUMP MOTOR CAP SP-300
26	22055597-00 PLATE,SHUTTER TABLE SP-300
27	22055595-00 PLATE, TABLE MOTOR CAP SP-300
28	22565406-00 PULLEY T20S5(B7)
29	11889107-00 R-BEARING,D10S6(B3FL)
30	15229506-00 SENSOR INTERRUPTER,GP1A05A5

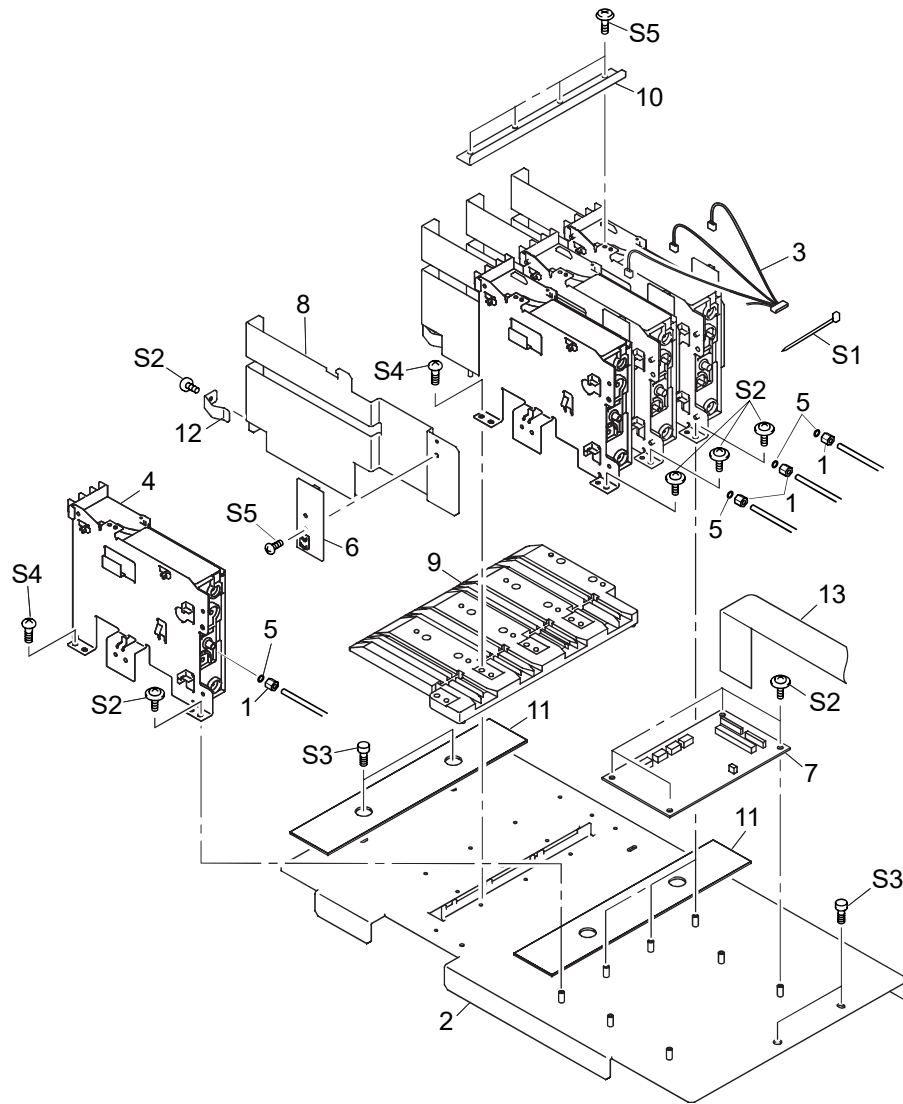
PARTS LIST -Main Parts-

Parts No.	Parts Name
31	22295268-00 SHAFT, TABLE GUIDE SP-300
32	22155957-00 SHAFT,SCREW M8 FJ-540
33	22165178-00 SPACER,6FAI FJ-50
34	22175334-00 SPRING,CAP-HEAD FJ-540
35	22175326-00 SPRING, TABLE FJ-540
36	22175324-00 SPRING,T-MOTOR FJ-540
37	22715364-00 STAY,NUT SP-300
38	22245104-00 STOPPER,GUIDE SHAFT SP-300
39	21965137-00 TABLE,CAP CASE SP-300
40	7576340000-03 SC-500 PUMP ASS'Y FOR SOL INK
41	22805477-00 ASS'Y,TUBING 1.4*30MM FJ-540
42	22805572-00 ASS'Y, TUBING 2*80MM SP-540V

PARTS LIST -Supplemental Parts-

Parts No.	Parts Name
S1	31049171-00 SCREW, CAP M3*12 NI
S2	31289102-00 CUPSCREW, M3*6 NI
S3	31289108-00 CUPSCREW, M3*8 NI
S4	31109601-00 NUT,SQUARE M3 FE CC
S5	31149703-00 RING,E-RING ETW-4 UNI-C
S6	31409702-00 SADDLE,LOCKING EDGE LES-1010
S7	31409801-00 SADDLE,LOCKING WIRE LWS-0711Z
S8	31019116-00 SCREW,BINDING M3*6 BC
S9	31019115-00 SCREW,BINDING M3*4 BC
S10	31199701-00 SCREW,SET WP M3*3 C
S12	31329601-00 CLAMP,INSULOK T-18S
S13	31289110-00 CUPSCREW,4*8 BC
S14	31329501-00 CLAMP,PUSH MOUNT RT30SSF5
S15	31029105-00 BUSH,NB-8

1-12 INK SYSTEM



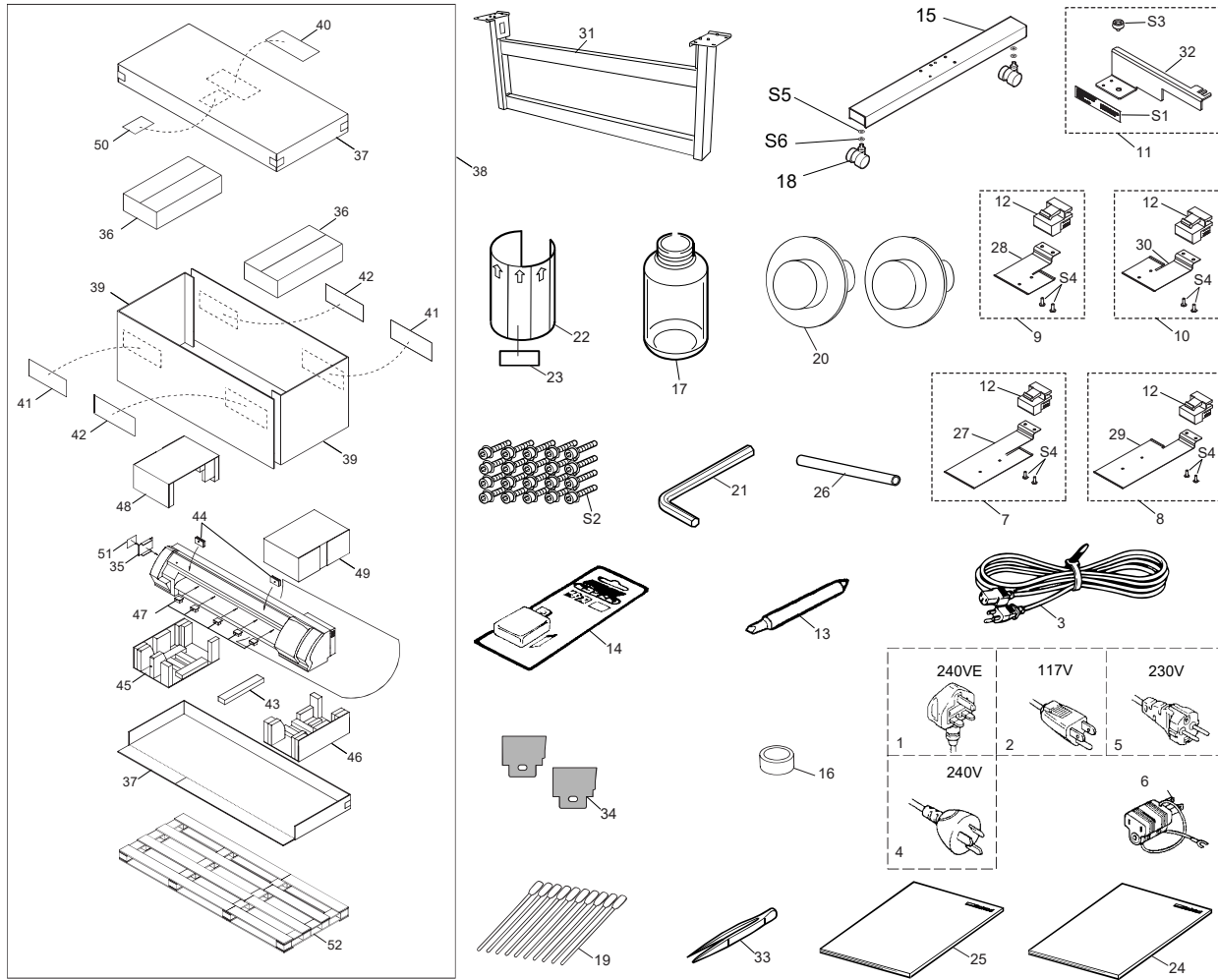
PARTS LIST -Main Parts-

Parts No.	Parts Name
1	11909133-00 ADAPTER,SCREW 2FAI FJ-50
2	22845106-00 BASE,INK CARTRIDGE SP-300
3	23415134-00 CABLE ASS'Y,INK JUNCTION SP-300
4	11659218-00 HOLDER,I/C SC-500
5	11659149-00 HOLDER,RING O 2FAI FJ-50
6	W8406050B0-00 INK JUNCTION BOARD SP-300
7	W8406050A0-00 JUNCTION BOARD 2 SP-300
8	22055594-00 PLATE,INK CARTRIDGE HOLDER SP-300
9	22055435-00 PLATE,INK FJ-500
10	22055593-00 PLATE,INK JOINT SP-300
11	21475153-00 SHEET,INK CARTRIDGE SP-300
12	22625103-00 SPRING,PRESS CARTRIDGE SP-300
13	23475216-00 CABLE CARD,40P1 1400L BB SP-300

PARTS LIST -Supplemental Parts-

Parts No.	Parts Name
S1	31329601-00 CLAMP,INSULOK T-18S
S2	31289102-00 CUPSCREW, M3*6 NI
S3	31289111-00 CUPSCREW, M4*6 NI
S4	31019120-00 SCREW,BINDING M3*15 BC
S5	31019803-00 SCREW,BINDING S-TIGHT M3*6 BC

1-13 ACCESSORY & STAND



PARTS LIST -Main Parts-

	Parts No.	Parts Name
1	13499111-00	AC CORD H05VV-F 240VE 10A S
2	13499109-00	AC CORD SJT 117V 10A 3PVC
3	23495117-00	CABLE-AC,VCTF 100V 12A 3P-S
4	23495124-00	AC-CORD 3ASL/100 240VA 10A SAA
5	23495125-00	AC-CORD H05VV 230V 10A S
6	13499209-00	ADAPTER PLUG (100V)
7	22805573-00	ASS'Y, LONG MEDIA CLAMP L SP-540V
8	22805574-00	ASS'Y, LONG MEDIA CLAMP R SP-540V
9	22805575-00	ASS'Y, SHORT MEDIA CLAMP L SP-540V
10	22805576-00	ASS'Y, SHORT MEDIA CLAMP R SP-540V
11	22805507 -00	ASS'Y,CARRIAGE RETAINER SP-300
12	22845112-00	BASE,MEDIA CLAMP SP-300
13	21845104-00	BLADE,NAG-5025LC
14	11849102-00	BLADE,OLFA AUTO CUTTER XB10
15	22035194-00	BASE,STAND FJ-540
16	22335143-00	CAP,EPDM
17	11369115-00	CASE,PP BOTTLE
18	12329505-00	CASTER,BWS-50BN
19	ST-037	CLEANER,STICK TX712A
20	21995112-00	FLANGE,GUIDE PNS-501
21	22565614-00	HEXAGONAL WRENCH 6
22	22535144-00	LABEL,DRAIN BOTTLE #LA29
23	22535330-00	LABEL,WARNING SOL INK #LA396
24	26015492-00	MANUAL,USE JP SP-500 COMMON
24	26015494-00	MANUAL,USE EN SP-500 COMMON
25	26015493-00	MANUAL,INS JP SP-500 ECO-SOL
25	26015499-00	MANUAL,INS EN SP-500 ECO-SOL
26	22155133-00	PIPE,TOOL D9*L150 FJ-540
27	22055691-00	PLATE,LONG CLAMP MEDIA L SP-540V
28	22055692-00	PLATE,SHORT CLAMP MEDIA L SP-540V
29	22055693-00	PLATE,LONG CLAMP MEDIA R SP-540V
30	22055694-00	PLATE,SHORT CLAMP MEDIA R SP-540V

PARTS LIST -Main Parts-

	Parts No.	Parts Name
31	22805577-00	ASS'Y STAND SP-540V
32	22245103-00	RETAINER,CARRIAGE SP-300
33	12569656-00	TWEEZERS PTS-01
34	11379105-00	WIPER,HEAD ASP FJ-50
35	22605305-00	CARTON,COVER INK SP-300
36	22605351-00	CARTON,ACCESSORY SP-540V
37	22605418-00	CARTON,COVER SP-540V
38	22605450-00	CARTON,SET SP-540V
39	22605419-00	CARTON,SLEEVE SP-540V
40	22535532-00	LABEL,CARTON CARE#LA762
41	22535516-00	LABEL,CARTON SP-540V #LA743
42	22535357-00	LABEL,USE FORKLIFT #LA435
43	21545229-00	PAD,CENTER SP-540V
44	22635128-00	PAD,COVER FRONT FJ-540
45	21545219-00	PAD,L-LEFT SP-540V
46	21545220-00	PAD,L-RIGHT SP-540V
47	21545178-00	PAD,SPACER RAIL SP-300
48	21545226-00	PAD,U-LEFT SP-540V
49	21545227-00	PAD,U-RIGHT SP-540V
50	22735136-00	STICKER,REP JP/EN SP-540V
51	22735135-00	STICKER,SUP JP/EN SP-300
52	21445113-00	TRAY,SKID SP-540V

PARTS LIST -Supplemental Parts-

	Parts No.	Parts Name
S1	31279201-00	LABEL,REPACKAGE #LA16
S2	31049157-00	SCREW,CAP M6*20 BC+PW+SW
S3	31139103-00	SCREW,PLAPOINT M4*6 WH FE
S4	31229103-00	SCREW,TRUSS M2*6 BC
S5	31249221-00	WASHER,8*18*1.6 C
S6	31249310-00	WASHER,SP M8 C