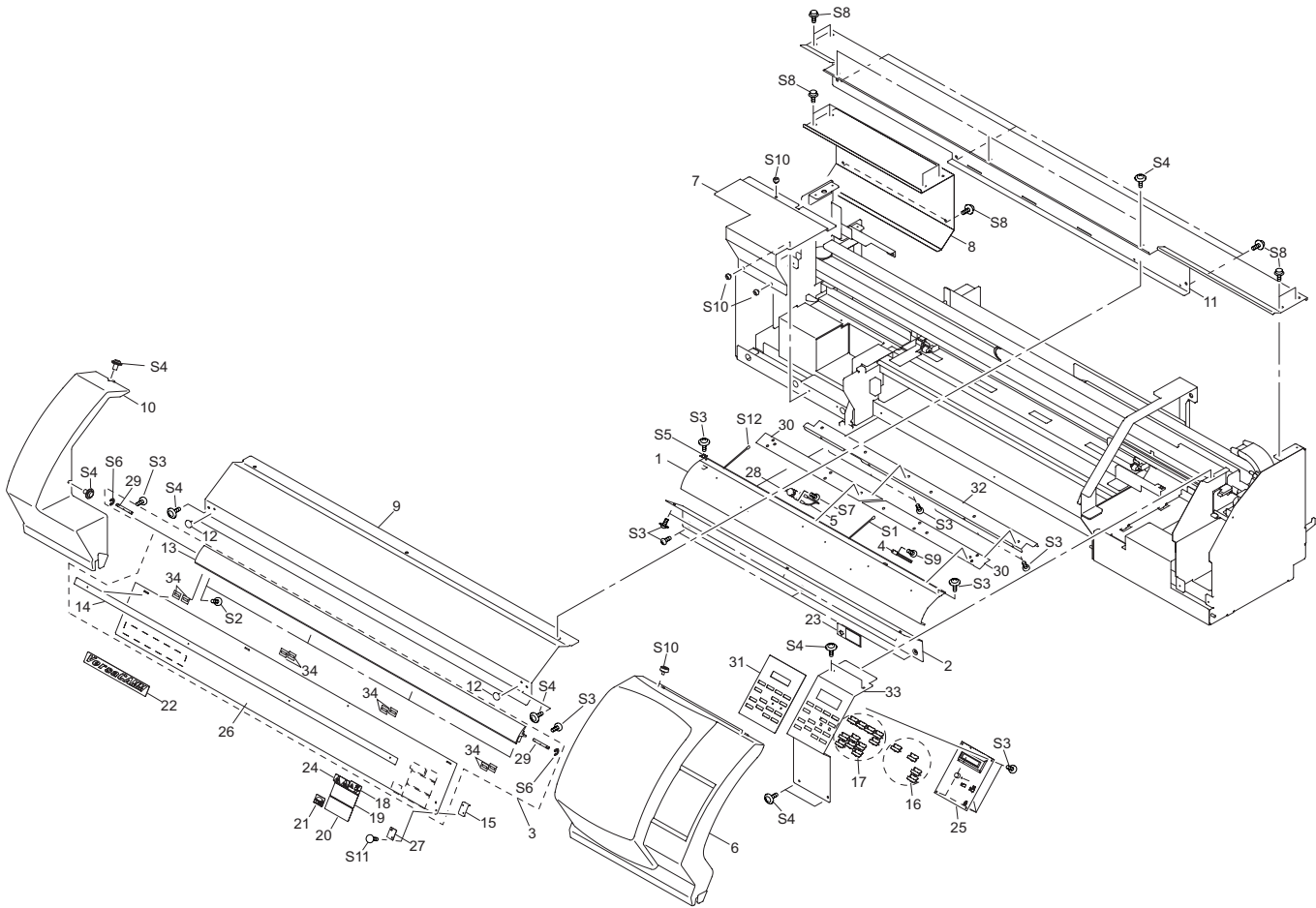


1 Structure & Spare Parts

1-1 COVER



PARTS LIST -Main Parts-

	Parts No.	Parts Name	SF-300	SP-300V
1	22095146 -00	APRON,F AL SP-300	*	*
2	22095144 -00	APRON,F UNDER SP-300	*	*
3	22805501 -00	ASS'Y,FRONT COVER SP-300	*	*
4	23415133 -00	ASS'Y,THERMISTOR CABLE SP-300	*	*
5	23415112 -00	ASS'Y,THERMOSTAT CABLE SP-300	*	*
6	22045135 -00	COVER,INK SYSTEM SP-300	*	*
7	22045114 -01	COVER,MAINTENANCE INKHEAD SP-300	*	*
8	22045118 -00	COVER,INK CARTRIDGE SP-300	*	*
	22045371 -00	COVER,INK CARTRIDGE SP-540V	*	*
9	22045116 -00	COVER,RAIL F SP-300	*	*
	22045388 -00	COVER,RAIL F SP-300V	*	*
10	22045134 -00	COVER,SIDE L SP-300	*	*
11	22045117 -00	COVER,TOP SP-300	*	*
12	12239406 -00	CUSHION,TM-96-6	*	*
13	22195119 -00	FRAME,COVER F SP-300	*	*
	22195160 -00	FRAME,COVER F SP-300V	*	*
14	21655261 -00	HOLDER,COVER F SP-300	*	*
15	21645106 -00	HOOK,INT SW FJ-540	*	*
16	22495211 -00	KEYTOP,DS-LD1H BLK	*	*
17	22495210 -00	KEYTOP,DS-LX1H BLK	*	*
18	22535287 -00	LABEL,CAUTION CARRIAGE #LA266	*	*
19	22535443 -00	LABEL,MEDIA CLAMP SP-300	*	*
20	22535390 -00	LABEL,EMERGENCY STOP #LA496	*	*
21	22535460 -00	LABEL,ENERGY STAR COLOR #LA668	*	*
22	22535453 -00	LABEL,VERSACAMM SP-300 #LA649	*	*
23	22535452 -00	LABEL,VOLTAGE SW SP-300 #LA648	*	*
24	22535330 -00	LABEL,,WARNING SOL INK #LA396	*	*

PARTS LIST -Main Parts-

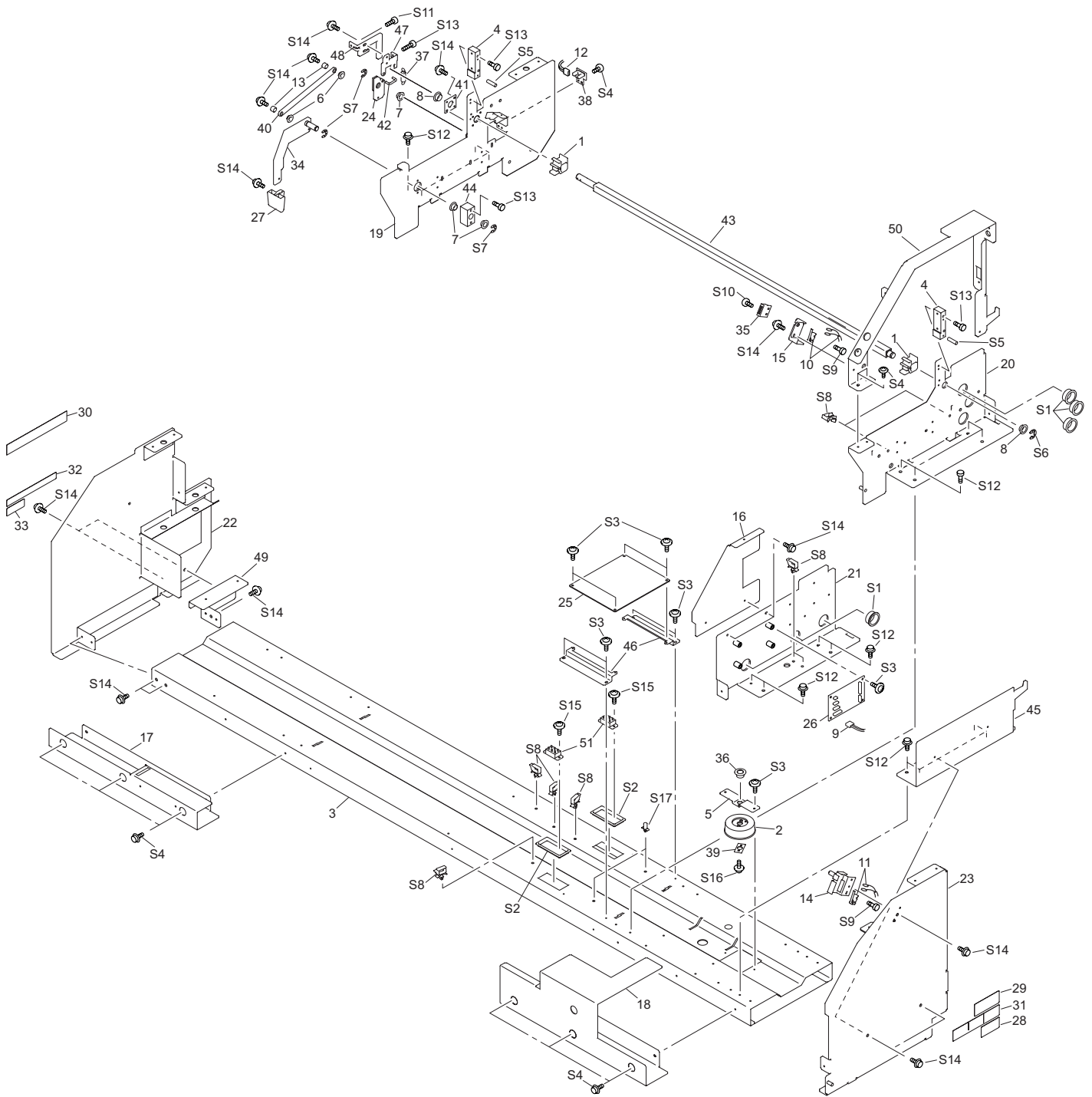
	Parts No.	Parts Name
25	W840605010 -00	PANEL BOARD SP-300
26	22055600 -00	PLATE,FRONT COVER SP-300
27	22055356 -00	PLATE,F COVER CM-500
28	15099124 -00	SENSOR,US-602SXTLAS 65OFF 500N
29	22155958 -00	SHAFT,COVER F FJ-540
30	21475150 -00	SHEET,HEATER RUBBER SP-300
31	21475155 -00	SHEET,PANEL SP-300
32	22715354 -00	STAY,HEATER HOLDER F SP-300
33	22715355 -00	STAY,PANEL SP-300
34	21425110 -00	WASHER,COVER FJ-50

PARTS LIST -Supplemental Parts-

	Parts No.	Parts Name
S1	31329601 -00	CLAMP,INSULOK T-18S
S2	31289112 -00	CUPSCREW, M3*10 NI
S3	31289102 -00	CUPSCREW, M3*6 NI
S4	31289111 -00	CUPSCREW, M4*6 NI
S5	31279106 -00	LABEL,CAUTION HOT SURF NO.778
S6	31149703 -00	RING,E-RING ETW-4 UNI-C
S7	31019148 -00	SCREW,BINDING M2.6*4 C
S8	31049169 -00	SCREW,CAP M4*8 BC+PW4*10*0.8
S9	31089110 -00	SCREW,PAN M3*4 C+PW
S10	31139103 -00	SCREW,PLAPOINT M4*6 WH FE
S11	31019116 -00	SCREW,BINDING M3*6 BC
S12	31329501 -00	CLAMP SET,PUSH MOUNT RT30SSF5

* 1 Serial Number SP-300V :ZS80350 and above

1-2 FRAME



1-2 FRAME

PARTS LIST -Main Parts-

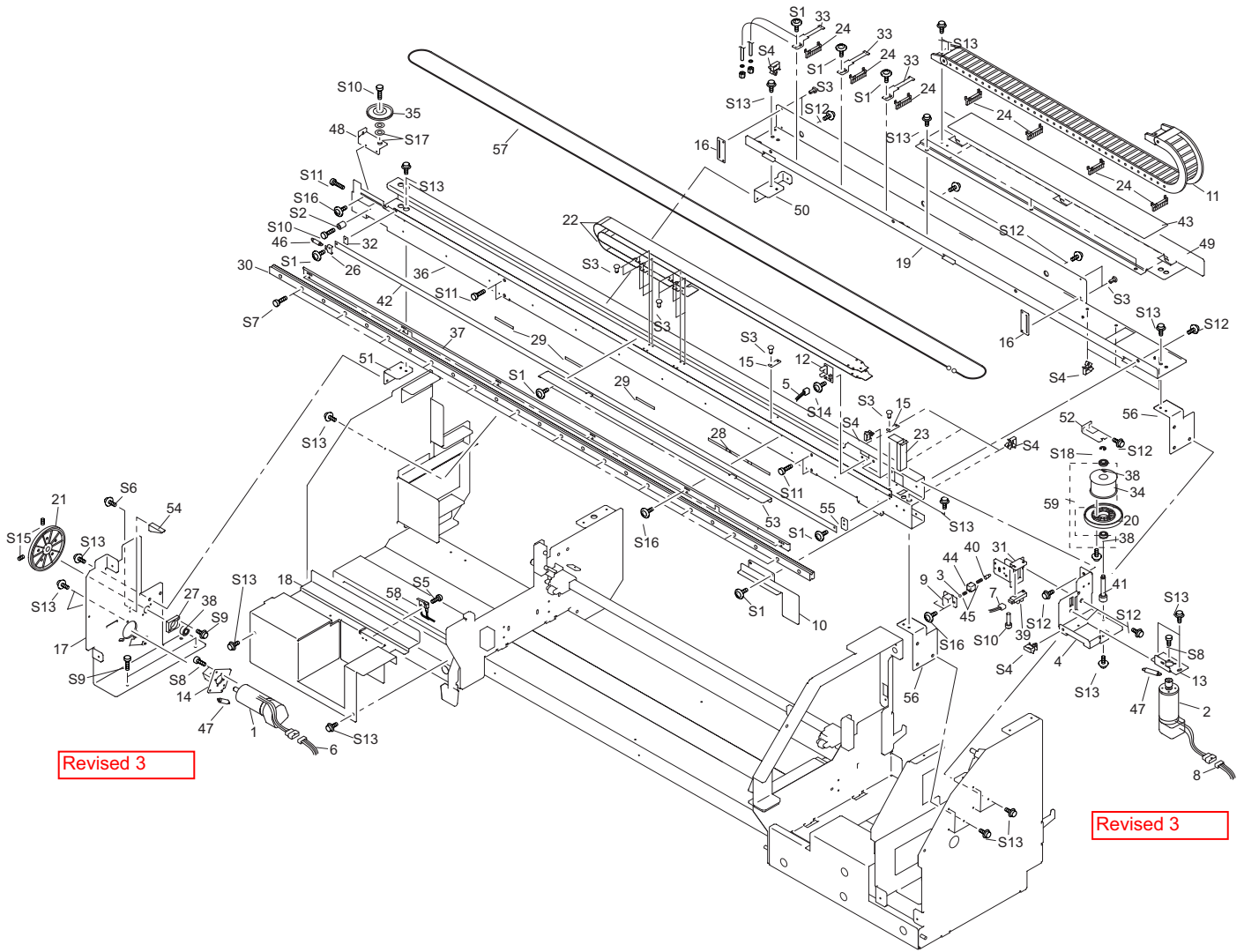
	Parts No.	Parts Name	SP-300	SP-300V
1	21905185 -00	ADAPTER,MEDIA CLAMP SP-300	*	
	21905192 -00	ADAPTER,CLAMP MEDIA SP-540V		*
2	7520501000 -00	ASS'Y,CAP BOTTLE 2 FJ-52	*	*
3	22845103 -00	BASE,BOTTOM SP-300	*	*
	22845211 -00	BASE,BOTTOM SP-300V		*
4	22845104 -00	BASE,RAIL SP-300	*	*
5	21985126 -00	BRACKET,INK CATCH TANK FJ-52	*	*
6	12159573 -00	BUSH,80F-0603	*	*
7	12159563 -00	BUSH,80F-1006	*	*
8	12159508 -00	BUSH,SHAFT OILES 80F-1206	*	*
9	23415129 -00	CABLE ASS'Y,FAN SP-300	*	*
10	23415113 -00	CABLE ASS'Y,FRONT COVER SW SP-300	*	*
11	23415114 -00	CABLE ASS'Y,MNT. COVER SW SP-300	*	*
12	23415126 -00	CABLE ASS'Y,LOADING SENSOR SP-300	*	*
13	21745109 -00	COLLAR,LEVER FJ-540	*	*
14	22045186 -00	COVER,INK SYSTEM SW SP-300	*	*
15	22025980 -00	COVER,INT SW FJ-540	*	*
16	22045119 -00	COVER,SCAN MOTOR SP-300	*	*
	22045372 -00	COVER,SCAN MOTOR SP-540V		*
17	22045120 -00	COVER,UNDER L SP-300	*	*
	22045374 -00	COVER,UNDER L SP-540V		*
18	22045121 -00	COVER,UNDER R SP-300	*	*
	22045375 -00	COVER,UNDER R SP-540V		*
19	22195106 -00	FRAME,MIDDLE L SP-300	*	*
	22195145 -00	FRAME,MIDDLE L SP-540V		*
20	22195102 -00	FRAME,MIDDLE R SP-300	*	*
21	22195105 -00	FRAME,SCAN MOTOR SP-300	*	*
22	22195104 -00	FRAME,SIDE L SP-300	*	*
	22195161 -00	FRAME,SIDE L SP-300V		*
23	22195103 -00	FRAME,SIDE R SP-300	*	*
24	22305101 -00	GUIDE,LEVER SP-300	*	*
25	W84060532 -00	HEATER POWER BOARD SP-300	*	*
26	W840605020 -00	JUNCTION BOARD 1 SP-300	*	*
27	22485104 -00	KNOB FJ-50	*	*
28	31279224 -00	LABEL,ETL/C-ETL NO.E-572	*	*
29	22535444 -00	LABEL,READ MANUAL #LA637	*	*
30	22535441 -00	LABEL,SET INK SP-300 #LA634	*	*
31	22535123 -00	LABEL,STANDARD(131) NO.910	*	*
32	22535442 -00	LABEL,USE ONLY ECO-SOL #LA635	*	*
33	22535330 -00	LABEL,WARNING SOL INK #LA396	*	*
34	22485108 -00	LEVER,CAM PINCH SP-300	*	*
35	12399102 -00	MAGNET CATCH TL-105	*	*
36	22155763 -00	OILES BUSH 80F-0806	*	*
37	22175105 -00	PINCH ROLL SPRING	*	*
38	W840605080 -00	PINCH U/D SENS BOARD SP-300	*	*
39	22055474 -00	PLATE,INK CATCH TANK FJ-52	*	*
40	22055589 -00	PLATE,LEVER LINK SP-300	*	*
41	22055598 -00	PLATE,SQUARE SHAFT SUPPORT SP-300	*	*
42	22145393 -00	SHAFT,JOINT PNC-960	*	*
43	22295270 -00	SHAFT,SQUARE SP-300	*	*
44	22035196 -00	STAND,LEVER SP-300	*	*
45	22715347 -00	STAY,FRAME SIDE R SP-300	*	*
46	22715349 -00	STAY,HEATER BOARD SP-300	*	*
	22715467 -00	STAY,HEATER BOARD SP-540V		*
47	22715351 -00	STAY,LEVER ADJUSTOR SP-300	*	*
48	22715350 -00	STAY,PINCH LEVER SP-300	*	*
49	22715348 -00	STAY,INK CARTRIDG SUPPORT SP-300	*	*
50	22785101 -00	SUPPORT,FRAME R SP-300	*	*
51	23415110 -00	CABLE ASS'Y,VOLT SELECTOR SP-300	*	*

PARTS LIST -Supplemental Parts-

	Parts No.	Parts Name
S1	31029101 -00	BUSH,NB-19
S2	31029106 -00	BUSH,SQUARE SB-6025
S3	31289102 -00	CUPSCREW, M3*6 NI
S4	31289111 -00	CUPSCREW, M4*6 NI
S5	31119904 -00	PIN,SPRING 2.5*8 SUS STRAIGHT
S6	31149706 -00	RING,E-RING ETW-10 SUS
S7	31149705 -00	RING,E-RING ETW-7 SUS
S8	31409801 -00	SADDLE,LOCKING WIRE LWS-0711Z
S9	31019149 -00	SCREW,BINDING M2.3*8 BC
S10	31019116 -00	SCREW,BINDING M3*6 BC
S11	31049142 -00	SCREW,CAP M3*6 BC MEC
S12	31049117 -00	SCREW,CAP M4*12 BC+PW 4*9*0.8
S13	31049137 -00	SCREW,CAP M4*25 BC
S14	31049169 -00	SCREW,CAP M4*8 BC+PW4*10*0.8
S15	31089110 -00	SCREW,PAN M3*4 C+PW
S16	31239125 -00	SCREW,W-SEMS M3*8 SUS
S17	31369102 -00	SPACER,PCB SUPPORT PCB-8S

Serial Number * 1 SP-300V : ZS80350 and above
 * 2 SP-300V : ZS80570 and above
 * 3 SP-300V : ZS80384 and above
 * 4 SP-300V : ZS80231 and above

1-3 DRIVE UNIT



Revised 3

Revised 3

1-3 DRIVE UNIT

PARTS LIST -Main Parts-

	Parts No.	Parts Name	SP-300	SP-300V
1	7876709020	ASS'Y, FEED MOTOR SP-54	Revised 3	* * * 2
2	7876709010	ASS'Y, SCAN MOTOR SP-54	Revised 3	* *
3	11869103 -00	BALL,4MM		* *
4	22845111 -00	BASE,SCAN MOTOR SP-300		* *
5	23415123 -00	CABLE ASS'Y,CUT CAR.ORG. SP-300		* *
6	23415124 -00	CABLE ASS'Y,GRIT MOTOR SP-300		* *
7	23415127 -00	CABLE ASS'Y,PRI. CAR. ORG. SP-300		* *
8	23415125 -00	CABLE ASS'Y,SCAN MOTOR SP-300		* *
9	21365103 -00	CASE,LOCK CJ-70		* *
10	22045130 -00	COVER,CAP MOTOR SP-300		* *
11	12049138 -00	COVER,TKPO180-2B R50-44		* *
12	W840605070 -00	CUT ORIGIN BOARD SP-300		* *
13	21995122 -00	FLANGE,MOTOR FJ-540		* *
14	21995118 -00	FLANGE,MOTOR SCAN CX-500		* *
15	W8406050C0 -00	FLEX1 SP-300		* *
16	W8406050D0 -00	FLEX2 SP-300		* *
17	22195107 -00	FRAME,FEED MOTOR SP-300		* *
	22195144 -00	FRAME,FEED MOTOR SP-540V		* * 1
18	22195108 -01	FRAME,SUPPORT AUTO CUTTER SP-300		* *
19	22195118 -00	FRAME,RAIL SUPPORT SP-300		* *
20	21685149 -00	GEAR,H235S20(B8)T2		* *
21	21685128 -00	GEAR,H300 S10(B6C16POM)		* *
22	22305102 -00	GUIDE,CUT CARRIAGE CABLE SP-300		* *
23	22305103 -00	GUIDE,CABLE CARD SP-300		* *
24	22135559 -00	GUIDE,TUBE 8 FJ-500		* *
25	21655262 -00	HOLDER,CABLE SP-300		* *
26	21655131 -00	HOLDER,LINEAR SCALE CJ-70		* *
27	22115121 -00	HOUSING,R-BEARING FRAME FJ-540		* *
28	22535388 -00	LABEL,G-ROLLER 170 CJ-540 #LA487		* *
29	22535387 -00	LABEL,G-ROLLER 50 CJ-540 #LA486		* *
30	21895157 -00	L-BEARING,SSR15XW3UE+1500L		* *
31	21345110 -00	LOCK,STAY SP-300		* *
32	22055316 -00	PLATE,LINEAR SCALE CJ-70		* *
33	22055591 -00	PLATE,TUBE GUIDE SP-300		* *
34	21975157 -00	PULLEY,HD48.46S16(B35C39.5 F53)		* *
35	21975154 -00	PULLEY,UD49.2S4(B4.6C6.6)		* *
36	22645116 -00	RAIL,GUIDE SP-300		* *
37	22645117 -00	RAIL,LINEAR SCALE SP-300		* *
38	22175870 -00	BEARING 10-19ZZ		* *
39	15229506 -00	SENSOR INTERRUPTER,GP1A05A5		* *
40	22295117 -00	SHAFT,LOCK CJ-70		* *
41	22155963 -00	SHAFT,PULLEY FJ-540		* *
42	21475149 -00	SHEET,LINEAR SCALE SP-300		* *
43	21475141 -00	SHEET,RAIL CABLE FJ-540		* *
44	22185101 -00	SLIDER,LOCK CJ-70		* *
45	22175134 -00	SPRING,A CJ-70		* *
46	22175122 -00	SPRING,BACKUP PNC-960		* *
47	22175157 -00	SPRING,C P-ROLLER CM-500		* *
48	22035172 -00	STAND,PULLEY SP-300		* *
49	22715357 -00	STAY,COVER FLEX CABLE SP-300		* *
50	22715361 -00	STAY,GUIDE RAIL LB SP-300		* *
51	22715379 -00	STAY,GUIDE RAIL LF SP-300		* *
52	22715363 -00	STAY,PULLEY SHAFT SP-300		* *
53	22715356 -00	STAY,GUIDE RAIL SUPPORT SP-300		* *
54	22135346 -00	STOPPER,CAM CM-500		* *
55	22135441 -00	STOPPER,LINEAR SCALE FJ-540		* *
56	22785102 -00	SUPPORT,CABLE SP-300		* *
57	21945145 -00	WIRE,SCAN DRIVE SP-300		* *
58	23415114 -00	CABLE-ASS'Y,MAINT-COVER SW SP-300		* *
59	22805471 -00	ASS'Y,PULLEY HD48.46S16 FJ-540		* *

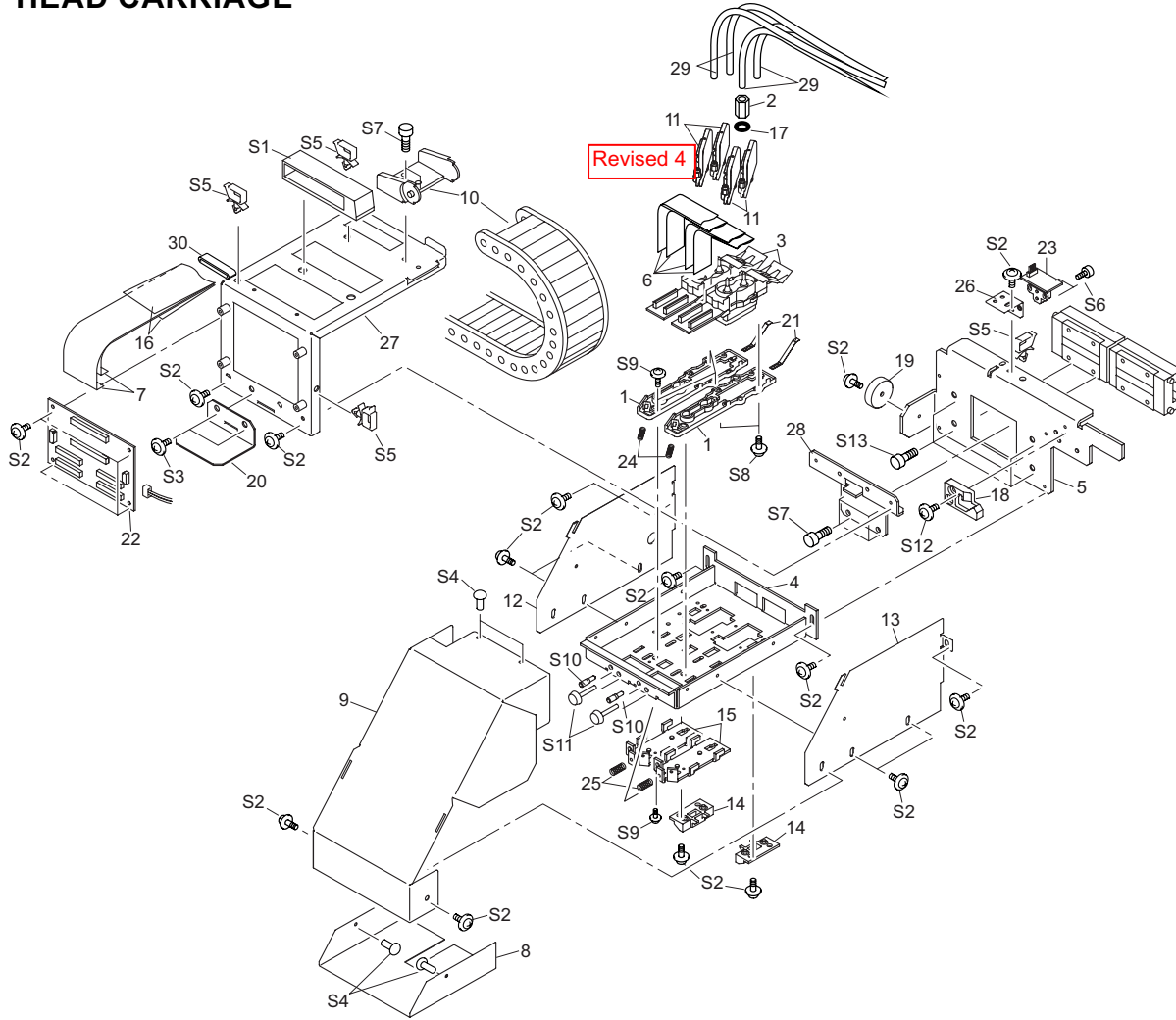
PARTS LIST -Supplemental Parts-

	Parts No.	Parts Name
S1	31289102 -00	CUPSCREW, M3*6 NI
S2	31129102 -00	PIPE,POLYCA 4*8*10
S3	31299102 -00	RIVET,NYLON P2655B
S4	31409801 -00	SADDLE,LOCKING WIRE LWS-0711Z
S5	31019149 -00	SCREW,BINDING M2.3*8 BC
S6	31019703 -00	SCREW,BINDING P-TIGHT 3*8 BC
S7	31049107 -00	SCREW,CAP M3*12 BC
S8	31049170 -00	SCREW,CAP M3*8 NI
S9	31049117 -00	SCREW,CAP M4*12 BC+PW 4*9*0.8
S10	31049174 -00	SCREW,CAP M4*15 NI
S11	31049137 -00	SCREW,CAP M4*25 BC
S12	31069104 -00	SCREW,CAP M4*6+FL C
S13	31049169 -00	SCREW,CAP M4*8 BC+PW4*10*0.8
S14	31089110 -00	SCREW,PAN M3*4 C+PW
S15	31199701 -00	SCREW,SET WP M3*3 C
S16	31239103 -00	SCREW,W-SEMS M3*8 BC+PW12*1
S17	31249217 -00	WASHER,PLAIN 4*8*1 C
S18	31149704 -00	RING,E ETW-6 SUS

* 1 Serial Number SP-300V : ZS80355 and above

* 2 Revised 3 Refer to the Service Information SP300-013.

1-4 HEAD CARRIAGE



PARTS LIST -Main Parts-

	Parts No.	Parts Name
1	21905166 -00	ADAPTER,HEAD FJ-540
2	11909133 -00	ADAPTER,SCREW 2FAI FJ-50
3	22805470 -00	ASS'Y,HEAD INKJET SOL SJ-540
4	22845105 -00	BASE,CARRIAGE AL SP-300
5	22845110 -00	BASE,CARRIAGE HOLDER SP-300
6	23475214 -00	CABLE-CARD,21P1 180L BB
7	23475213 -00	CABLE-CARD,36P1 2000L BB
8	22045140 -00	COVER,HEAD BOARD SP-300
9	22045139 -00	COVER,PRINTING CARRIAGE SP-300
10	12049138 -00	COVER,TKPO180-2B R50-44
11	6081181200	ASSY,INK DAMPER 3 2FAI SJ-540 Revised 4
12	22195111 -00	FRAME,CARRIAGE SIDE L SP-300
13	22195101 -00	FRAME,CARRIAGE SIDE R SP-300
14	22135618 -00	GUIDE,CARRIAGE CAP FJ-540
15	22135440 -00	GUIDE,HEAD AL FJ-540
16	21655262 -00	HOLDER,CABLE SP-300
17	11659149 -00	HOLDER,RING O 2FAI FJ-50
18	21345105 -00	LOCK,CJ-500
19	22395108 -00	MAGNET,CJ-500
20	22055592 -00	PLATE,DAMPER SP-300
21	22055547 -00	PLATE,GND FJ-540
22	W8406050F0 -00	PRINT CARRIAGE BOARD SP-300
23	W840605050 -00	PRINT LINEAR ENCORDER BOARD SP-300
24	22175520 -00	SPRING,HEAD ADJUST 500 FJ-540
25	22175519 -00	SPRING,HEAD PLESS 500 FJ-540
26	22715358 -00	STAY,ENCORDER SENSOR SP-300
27	22715362 -00	STAY,HOLDER CARRIAGEBOARD SP-300
28	22785103 -00	SUPPORT,CARRIAGE BOARD SP-300
29	22805499 -00	ASS'Y,TUBING 2*2000MM SP-300
30	12399352 -00	FILTER(E) FRC-45-12-6.5

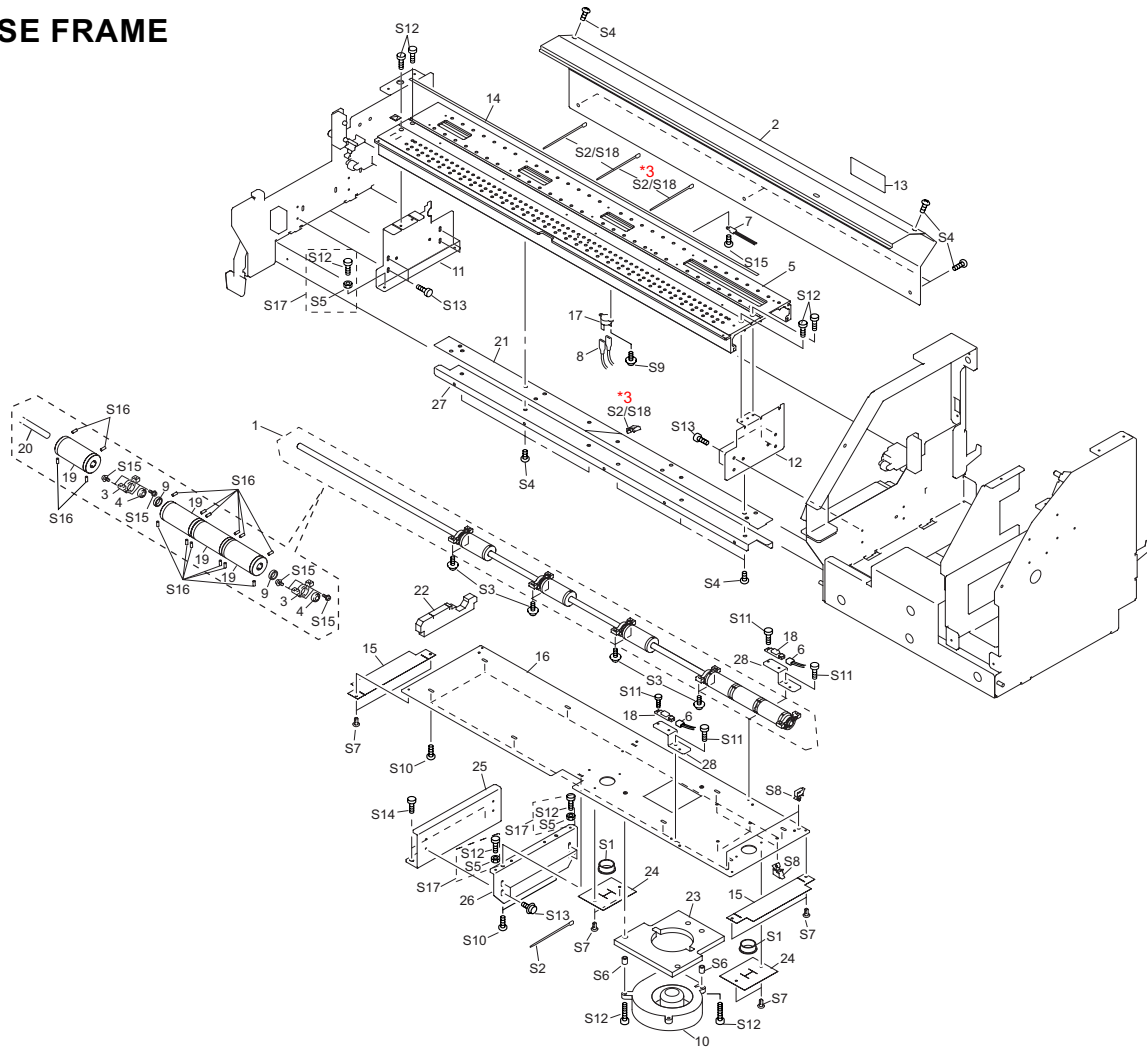
PARTS LIST -Supplemental Parts-

	Parts No.	Parts Name
S1	31379101 -00	CLAMP,FLAT CABLE FCS-50P
S2	31289102 -00	CUPSCREW, M3*6 NI
S3	31289111 -00	CUPSCREW, M4*6 NI
S4	31299102 -00	RIVET,NYLON P2655B
S5	31409801 -00	SADDLE,LOCKING WIRE LWS-0711Z
S6	31019148 -00	SCREW,BINDING M2.6*4 C
S7	31049169 -00	SCREW,CAP M4*8 BC+PW4*10*0.8
S8	31679902 -00	SCREW,C-SEMS,2*8 C
S9	31089121 -00	SCREW,PAN M2.3*8 NI +PW2*6*0.4
S10	31199905 -00	SCREW,SET CP M3*16 BC
S11	31179908 -00	SCREW,UREA M3*20 N-1 WH
S12	31239103 -00	SCREW,W-SEMS M3*8 BC+PW12*1
S13	31069104 -00	SCREW,CAP M4*6+FL C

Revised 4

6081181200 ASSY,INK DAMPER 3 2FAI SJ-540
Refer to Service Information SP300-014.

1-5 BASE FRAME



PARTS LIST -Main Parts-

	Parts No.	Parts Name	SP-300	SP-300V
1	22805502 -00	ASS'Y, GRIT ROLLER SP-300	*	*
2	22095145 -00	APRON,B SP-300	*	*
3	22115106 -00	BEARING HOUSING A 211-106	*	*
4	22175870 -00	BEARING 10-19ZZ	*	*
5	22005139 -00	BED,SP-300	*	*
6	23415118 -00	CABLE ASS'Y,PAPER SENSOR SP-300	*	*
7	23415133 -00	CABLE-ASS'Y,THERMISTOR SP-300	*	*
8	23415112 -00	CABLE-ASS'Y,THERMOSTAT SP-300	*	*
9	22165165 -00	COLLAR	*	*
10	21715110 -00	FAN SCBD24H7-016	*	*
11	22195109 -00	FRAME,SIDE BED L SP-300	*	*
	22195147 -00	FRAME,SIDE BED L SP-540V	*	*
12	22195110 -00	FRAME,SIDE BED R SP-300	*	*
13	22535452 -00	LABEL,VOLTAGE SW SP-300 #LA648	*	*
14	21545157 -00	PAD,CUTTER SP-300	*	*
15	22055599 -00	PLATE,SHUTTER END SP-300	*	*
16	22055590 -00	PLATE,SHUTTER SP-300	*	*
	22055708 -00	PLATE,SHUTTER SP-300V	*	*
17	15099124 -00	SENSOR,US-602SXTLAS 65OFF 50DN	*	*
18	15099115 -00	SENSOR-INTERRUPTER GP2A25NJ	*	*
19	22075129 -00	SET,G,ROLLER,FD28.015S10 SP-300	*	*
20	22295271 -00	SHAFT,FEED SP-300	*	*
21	21475150 -00	SHEET,HEATER RUBBER SP-300	*	*
22	21625102 -00	SHUTTER,BED SP-300	*	*
	21625106 -00	SHUTTER,BED SP-540V	*	*
23	22125432 -00	SHUTTER,FAN FJ-540	*	*
24	21625103 -00	SHUTTER,HEATER CORD SP-300	*	*
25	22165218 -00	SPACER,BED LOWER SP-300	*	*
	22165229 -00	SPACER,BED LOWER SP-540V	*	*
26	22165217 -00	SPACER,BED UPPER SP-300	*	*
	22165230 -00	SPACER,BED UPPER SP-540V	*	*
27	22715353 -00	STAY,HEATER HOLDER B SP-300	*	*
28	22715352 -00	STAY,PAPER SENSOR SP-300	*	*

PARTS LIST -Supplemental Parts-

	Parts No.	Parts Name	SP-300	SP-300V
S1	31029101 -00	BUSH,NB-19	*	*
S2	31329601 -00	CLAMP,INSULOK T-18S	*	*
S3	31289112 -00	CUPSCREW, M3*10 NI	*	*
S4	31289102 -00	CUPSCREW, M3*6 NI	*	*
S5	31109802 -00	NUT,HEXAGON M4C	*	*
S6	31129102 -00	PIPE,POLYCA 4*8*10	*	*
S7	31299102 -00	RIVET,NYLON P2655B	*	*
S8	31409801 -00	SADDLE,LOCKING WIRE LWS-0711Z	*	*
S9	31019148 -00	SCREW,BINDING M2.6*4 C	*	*
S10	31019703 -00	SCREW,BINDING P-TIGHT 3*8 BC	*	*
S11	31049170 -00	SCREW,CAP M3*8 NI	*	*
S12	31049137 -00	SCREW,CAP M4*25 BC	*	*
S13	31049169 -00	SCREW,CAP M4*8 BC+PW4*10*0.8	*	*
S14	31049117 -00	SCREW,CAP M4*12 BC+PW 4*9*0.8	*	*
S15	31089110 -00	SCREW,PAN M3*4 C+PW	*	*
S16	31199704 -00	SCREW,SET WP M3*8 BC	*	*
S17	31179106 -00	SCREW,JACK UP SP-540V	*	*
S18	31329501 -00	CLAMP,PUSH MOUNT RT30SSF5	*	*

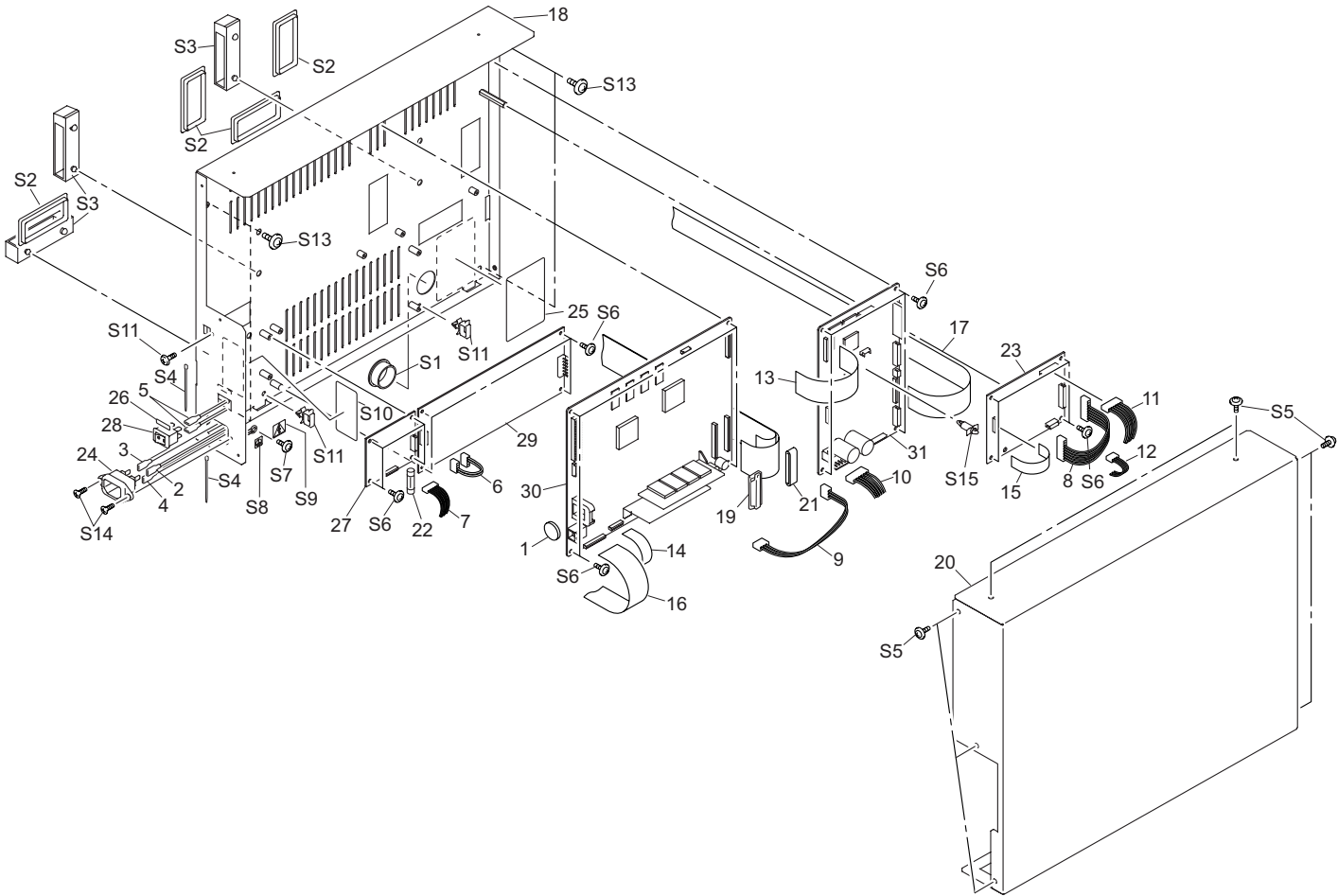
* 1 Serial Number SP-300V : ZS80350 and above

* 2 Serial Number SP-300V : ZS80390 and above

* 3 SP-300V Serial Number: ZS80100 and above
 31329501-00 CLAMP,PUSH MOUNT RT30SSF5
 SP-300 31329601-00 CLAMP,INSULOK T18S

* 4 SP-300V Serial Number : ZS80350 and above
 31179106-00 SCREW,JACK UP SP-540V
 SP-300,SP-300V Serial Number : ZS80349 and below
 31109802-00 NUT,HEXAGON M4C
 31089110-00 SCREW,PAN 3*4 C+PW

1-6 CHASSIS



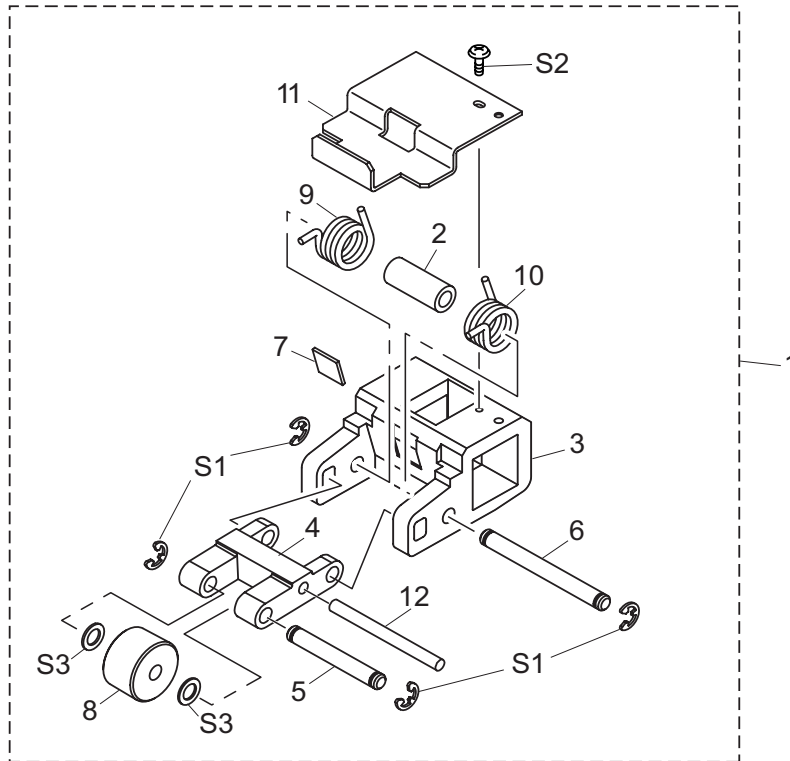
PARTS LIST -Main Parts-

	Parts No.	Parts Name
1	15009101 -00	BATTERY CR2032
2	23505631 -00	CABLE-ASSY AC LIVE BROWN PC-600
3	23505632 -00	CABLE-ASSY AC NEUTRAL BLUE PC-600
4	23415268 -00	CABLE-ASSY AC GROUND GREEN SP-540
5	23415116 -00	CABLE-ASSY AC POWER SP-300
6	23415131 -00	CABLE ASS'Y,JUNBI E SP-300
7	23415130 -00	CABLE ASS'Y,POWER H AC SP-300
8	23415111 -00	CABLE ASS'Y,POWER H DC SP-300
9	23415117 -00	CABLE ASS'Y,POWER MAIN SP-300
10	23415115 -00	CABLE ASS'Y,POWER SERVO SP-300
11	23415109 -00	CABLE ASS'Y,RELAY JUNCTION SP-300
12	23415132 -00	CABLE ASS'Y,THERMO JUNC. SP-300
13	23475197 -00	CABLE-CARD 25P1 105L BB
14	23475211 -00	CABLE-CARD,14P1 350L BB
15	23475217 -00	CABLE-CARD,18P1 80L BB
16	23475212 -00	CABLE-CARD,24P1 600L BB
17	23475112 -00	CABLE-CARD,26P1 700L BB
18	22815149 -00	CHASSIS,SP-300
19	11769118 -00	CLAMP,FCM2-S6-14
20	22045234 -00	COVER,CHASSIS TYPE 2 SP-300
21	12399352 -00	FILTER(E) FRC-45-12-6.5
22	12559105 -00	FUSE,5X20 21706.3 6.3A/250V
23	W840605310 -00	HEATER CONTROL BOARD SP-300
24	13429702 -00	INLET AC-P01CF01 15A250V
25	22535257 -00	LABEL,CAUTION VOLTAGE #LA167
26	22535117 -00	LABEL,POWER CM-500 NO.893
27	W840605330 -00	POWER JUNCTION BOARD SP-300
28	13129170 -00	POWER SW AJ7201B
29	12429114 -00	POWER UNIT,ZWS150PAF-36/J
30	7840605500 -00	SP-300 MAIN BOARD ASS'Y
31	7840605600 -00	SP-300 SERVO BOARD

PARTS LIST -Supplemental Parts-

	Parts No.	Parts Name
S1	31029101 -00	BUSH,NB-19
S2	31029106 -00	BUSH,SQUARE SB-6025
S3	31379101 -00	CLAMP,FLAT CABLE FCS-50P
S4	31329601 -00	CLAMP,INSULOK T-18S
S5	31289105 -00	CUPSCREW, M3*6 BC
S6	31289102 -00	CUPSCREW, M3*6 NI
S7	31289111 -00	CUPSCREW, M4*6 NI
S8	31279116 -00	LABEL,EARTH MARK-1 NO.E-580
S9	31279121 -00	LABEL,FLASH-LIGHTING NO.E-582
S10	31279191 -00	LABEL,WARNING FUSE REPLACE #347
S11	31409801 -00	SADDLE,LOCKING WIRE LWS-0711Z
S12	31019116 -00	SCREW,BINDING M3*6 BC
S14	31169103 -00	SCREW,FLAT M3*6 BC
S15	31369101 -00	SPACER,PCB SUPPORT PCB-8L

1-7 PINCH ROLLER



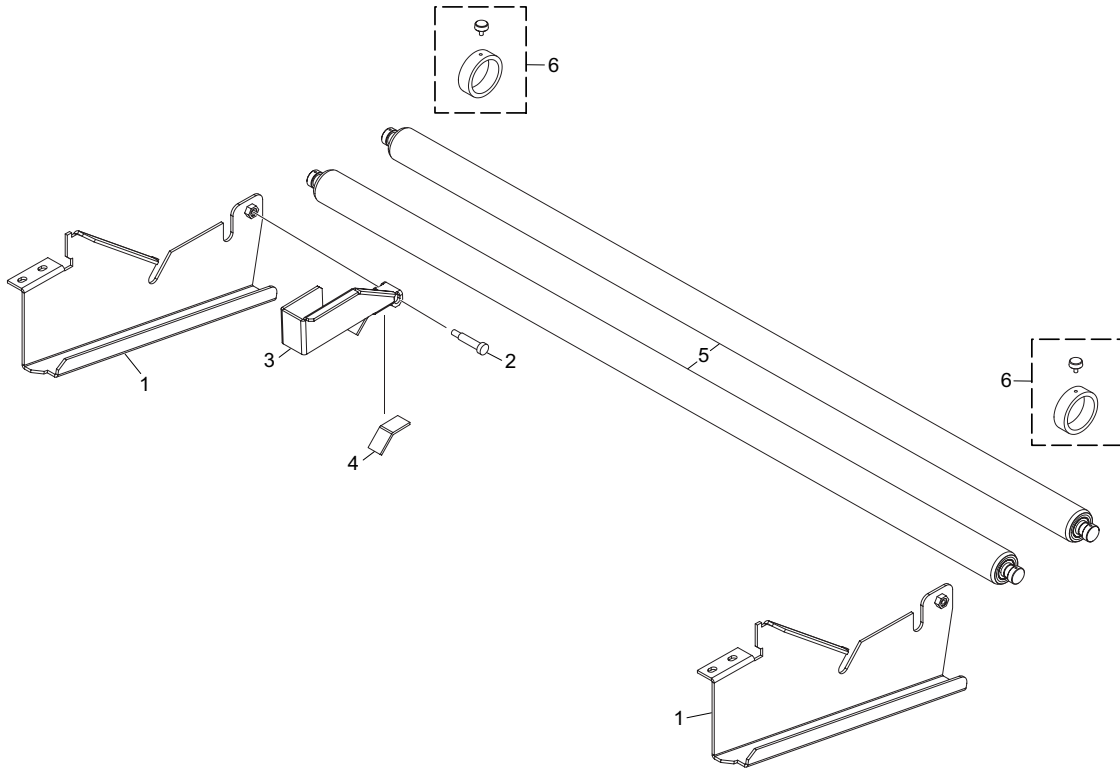
PARTS LIST -Main Parts-

	Parts No.	Parts Name
1	22805500 -00	ASS'Y, PINCH ROLLER L/R SP-300
2	21745101 -00	COLLAR,P-ROLLER PNC-960
3	22115782 -00	FRAME,PINCH ROLL CX-24
4	22145416 -00	LEVER,P-ROLLER PNC-960
5	22145831 -00	PIN NO.1 (214-831)
6	22145832 -00	PIN NO.2 214-832
7	22055264 -00	PLATE,GUIDE P PNC-960
8	21565102 -00	P-ROLLER TD16S4(B10) TYPE2
9	22625101 -00	SPRING,PINCH LEFT SP-300
10	22625102 -00	SPRING,PINCH RIGHT SP-300
11	22715377 -00	STAY,PINCH SENSOR SP-300
12	11539104 -00	PIN 3*35 SUS M6

PARTS LIST -Supplemental Parts-

	Parts No.	Parts Name
S1	31149702 -00	RING,E-RING ETW-3 UNI-C
S2	31229102 -00	SCREW,TRUSS M2*5 BC
S3	31249211 -00	WASHER,PLAIN 4.3*7*0.5 C

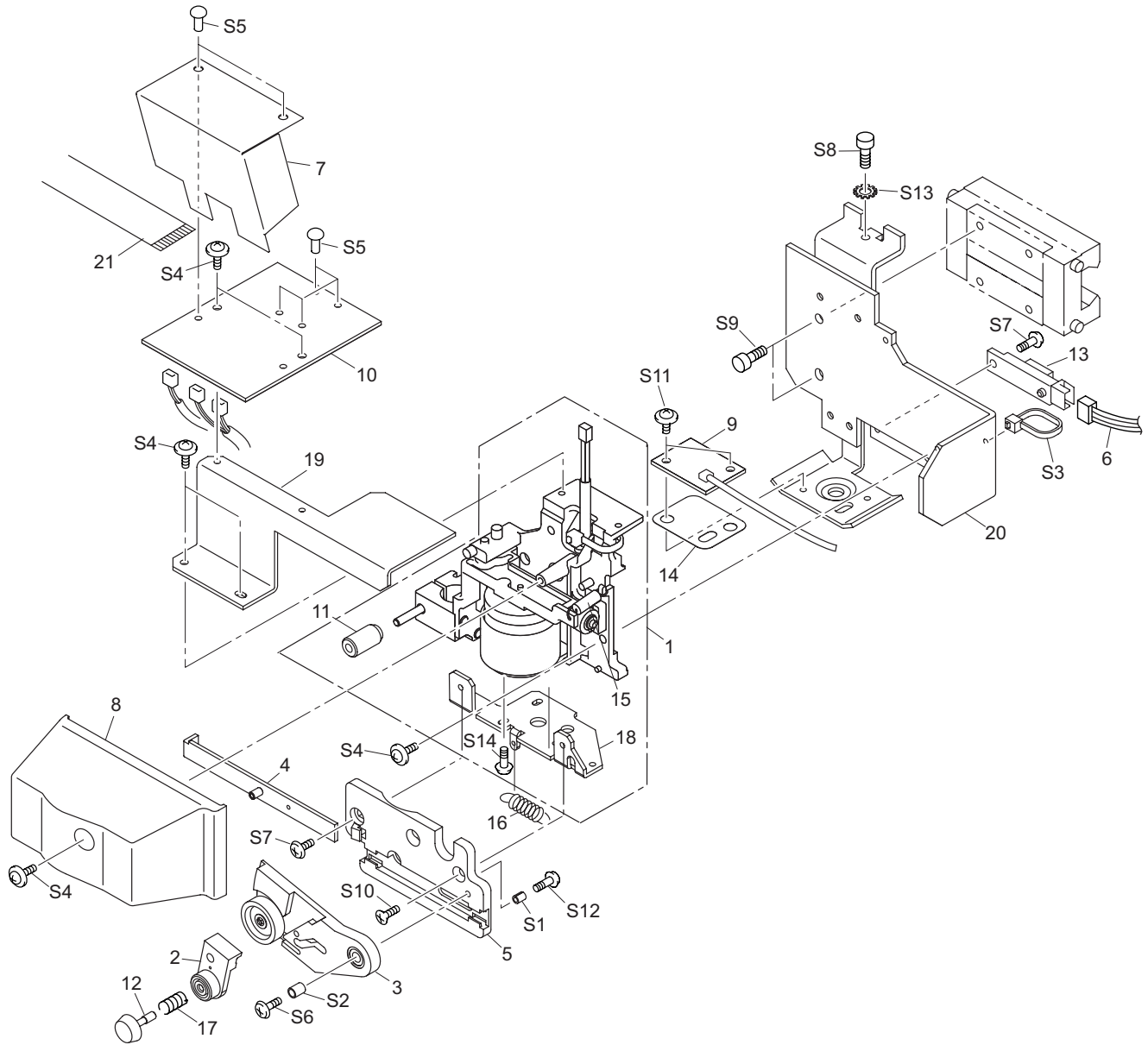
1-8 STAY ROLL



PARTS LIST -Main Parts-

	Parts No.	Parts Name
1	22145200 -00	ARM,SP-300
2	21815106 -00	BOLT,SHOULDER PNS-501
3	22485107 -00	LEVER,BRAKE SP-300
4	21545139 -00	PAD,BRAKE PNS-501
5	22295269 -00	SHAFT,SHEET SP-300
6	22245108 -00	STOPPER,SHAFT SP-300

1-9 TOOL CARRIAGE



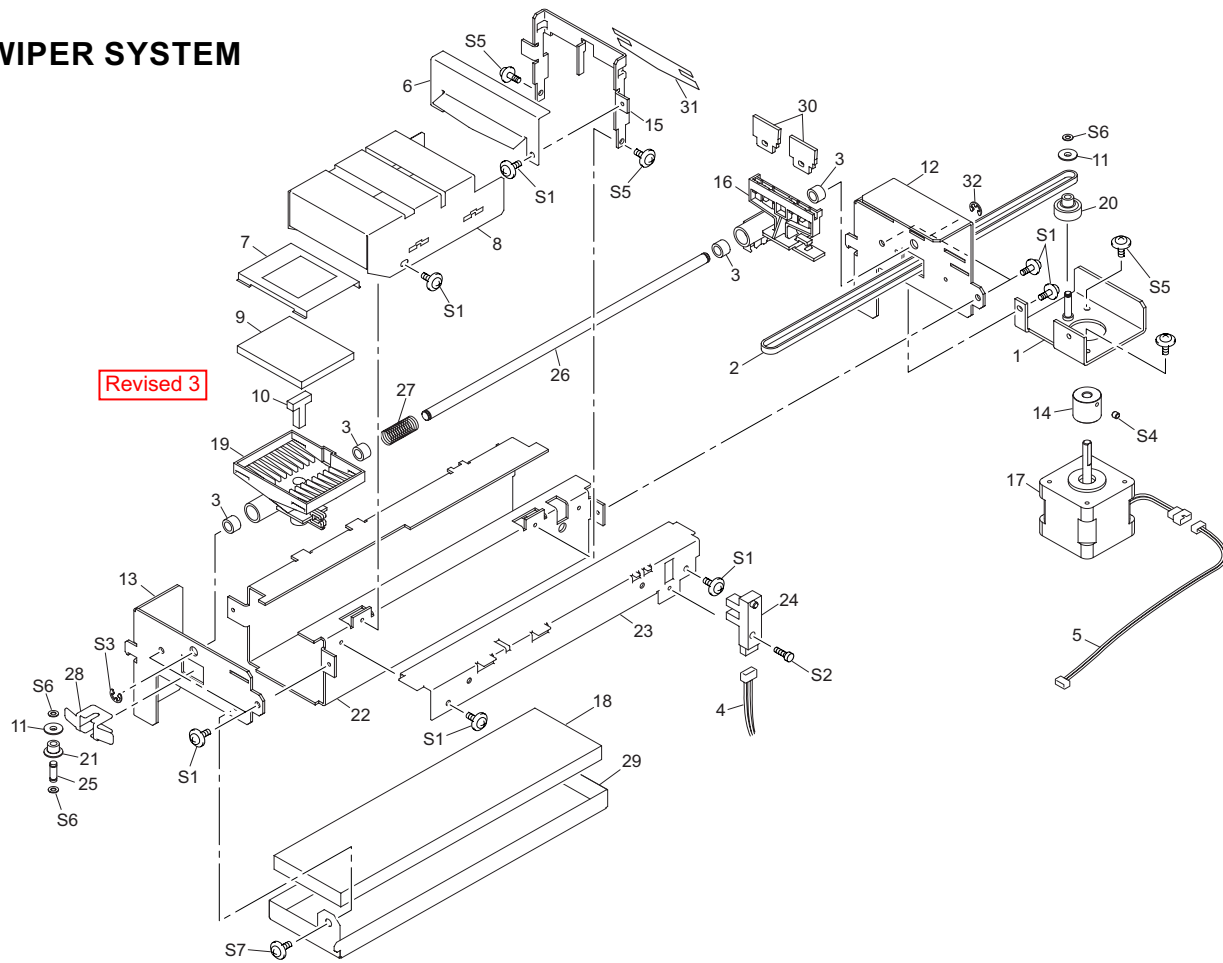
PARTS LIST -Main Parts-

	Parts No.	Parts Name
1	22805571 -00	ASS'Y, CARRIAGE SP-300
2	22805292 -00	ASS'Y, CLAMP BLADE CM-500
3	22805291 -00	ASS'Y, HOLDER BLADE CM-500
4	22805287 -00	ASS'Y, PLATE CAM SLIDE CM-500
5	7488739000 -00	BASE CUTTER CJ-500
6	23415119 -00	CABLE ASS'Y,PINCH SENSOR SP-300
7	22045137 -00	COVER,CARRIAGE BOARD SP-300
8	22025269 -00	COVER,CARRIAGE CM-500
9	W840605060 -00	CROP MARK BOARD SP-300
10	W8406050E0 -00	CUT CARRIAGE BOARD SP-300
11	22285503 -00	NUT,PENHOLDER
12	21495115 -00	SCREW,BLADE SET CM-500
13	15099115 -00	SENSOR-INTERRUPTER GP2A25NJ
14	21475148 -00	SHEET,FILTER CROP CJ-500
15	22175122 -00	SPRING,BACKUP PNC-960
16	22175154 -00	SPRING,BLADE UP CM-500
17	22175155 -00	SPRING,SCREW CM-500
18	22715168 -00	STAY,AUTO CUTTER 2 CM-500
19	22715360 -00	STAY,CUT CARRIAGE BOARD SP-300
20	22715359 -00	STAY,CUT CARRIAGE HOLDER SP-300
21	23475207 -00	CABLE-CARD, 15P1 1900L BB

PARTS LIST -Supplemental Parts-

	Parts No.	Parts Name
S1	31029801 -00	BUSH,ROLL 2*4
S2	31029803 -00	BUSH,ROLL 3*5
S3	31329601 -00	CLAMP,INSULOK T-18S
S4	31289102 -00	CUPSCREW, M3*6 NI
S5	31299102 -00	RIVET,NYLON P2655B
S6	31019118 -00	SCREW,BINDING M3*10 BC
S7	31019116 -00	SCREW,BINDING M3*6 BC
S8	31049117 -00	SCREW,CAP M4*12 BC+PW 4*9*0.8
S9	31049169 -00	SCREW,CAP M4*8 BC+PW4*10*0.8
S10	31169103 -00	SCREW,FLAT M3*6 BC
S11	31089110 -00	SCREW,PAN M3*4 C+PW
S12	31229103 -00	SCREW,TRUSS M2*6 BC
S13	31249402 -00	WASHER,EXTERNAL TOOTH M4 C
S14	31019112 -00	SCREW,BINDING M2.6*4 BC

1-10 WIPER SYSTEM



PARTS LIST -Main Parts-

	Parts No.	Parts Name	SP-300	SP-300V
1	22845107 -00	BASE,WIPER MOTOR SP-300	*	*
2	11929139 -00	BELT,520P2M4-530	*	*
3	12159536 -00	BUSH,B-S6-17	*	*
4	23415128 -00	CABLE ASS'Y,WIPER SENOR SP-300	*	*
5	23415120 -00	CABLE ASS'Y,WIPER MOTOR SP-300	*	*
6	22045141 -00	COVER,SCRAPER SP-300	*	*
7	22045129 -00	COVER,SERGE MIST SP-300	*	*
8	22045128 -00	COVER,WIPER SP-300	*	*
9	1000000416	FILTER(M),SERGE MIST 2 SP-300 Revised 3	*	*
10	22275120 -00	FILTER(M),SERGE MIST UNDER SP-300	*	*
11	21995104 -00	FLANGE,PULLEY STX-7	*	*
12	22195113 -00	FRAME,WIPER B SP-300	*	*
13	22195112 -00	FRAME,WIPER F SP-300	*	*
14	21685144 -00	GEAR,S53S5(B15)	*	*
15	21655263 -00	HOLDER,SCRAPER SP-300	*	*
16	21655245 -00	HOLDER,WIPER FJ-540	*	*
17	22435106 -00	MOTOR,103-593-1041	*	*
18	21545195 -00	PAD,WIPER UNDER TYPE2 SP-300	*	*
19	22055601 -00	PLATE,SERGE MIST SP-300	*	*
20	21975124 -00	PULLEY,T14P2S4 + GEAR,S53	*	*
21	21975123 -00	PULLEY,WD6.94S9	*	*
22	22645114 -00	RAIL,WIPER GUIDE SP-300	*	*
23	22645115 -00	RAIL,WIPER R SP-300	*	*
24	15229506 -00	SENSOR INTERRUPTER,GP1A05A5	*	*
25	22295132 -00	SHAFT,IDLE PULLEY STX-7	*	*
26	22295267 -00	SHAFT,WIPER SP-300	*	*
27	22625105 -00	SPRING,SET SERGE MIST SP-300	*	*
28	22175140 -00	SPRING,TENSHONER STX-7	*	*
29	21445109 -00	TRAY,WIPER UNDER SP-300	*	*
	21445116 -00	TRAY,WIPER UNDER SP-300V		*
30	11379105 -00	WIPER,HEAD ASP FJ-50	*	*
31	21375107 -00	WIPER,SCRAPER FJ-540	*	*

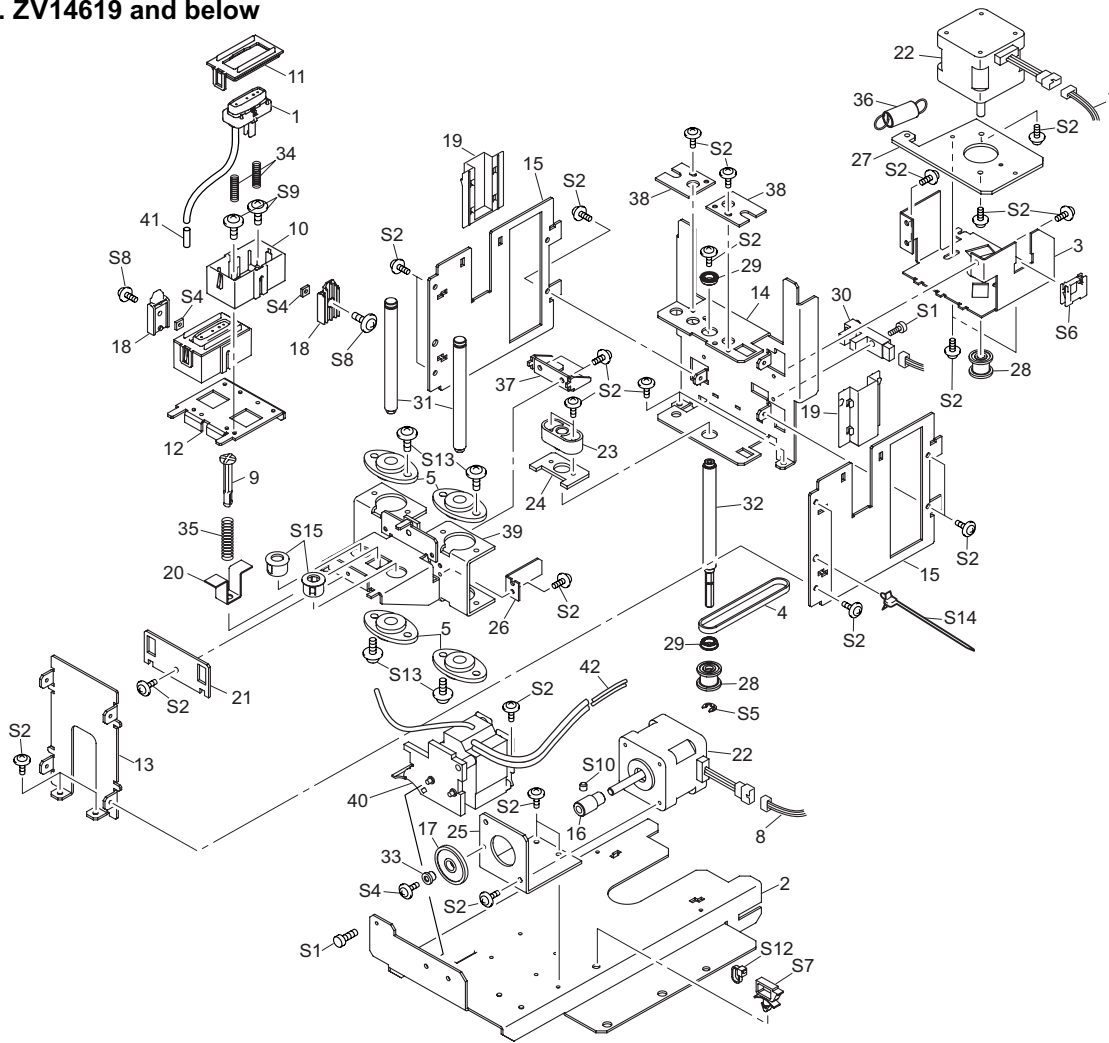
* REVISED 3 Refer to Service Information : SP300-012

PARTS LIST -Supplemental Parts-

	Parts No.	Parts Name
S1	31289108 -00	CUPSCREW, M3*8 NI
S2	31049107 -00	SCREW,CAP M3*12 BC
S3	31149703 -00	RING,E-RING ETW-4 UNI-C
S4	31199701 -00	SCREW,SET WP M3*3 C
S5	31239101 -00	SCREW,W-SEMS M3*6 BC
S6	31249952 -00	WASHER,POLYSLIDER 2.6*5*.5 CUT
S7	31139101 -00	SCREW,PLAPOINT M3*6 BK FE

* 1 Serial Number SP-300V : ZS80196 and above

1-11 PUMP SYSTEM_Old type
S/No. ZV14619 and below



PARTS LIST -Main Parts-

	Parts No.	Parts Name
	12809448 -00	ASS'Y,CAP-TOP FJ-540
2	22845109 -00	BASE,BOTTOM CAP SP-300
3	22845108 -00	BASE,TABLE MOTOR CAP SP-300
4	21925137 -00	BELT,166P2M4-530
5	12529101 -00	BUSH,80FL-08
7	23415121 -00	CABLE ASS'Y,CAP MOTOR SP-300
8	23415122 -00	CABLE ASS'Y,PUMP MOTOR SP-300
9	22335146 -00	CAP,T-SPRING FJ-540
10	21365121 -00	CASE,CAP-TOP FJ-540
11	22025671 -00	COVER,CAP-CASE FJ-540
12	22195152 -00	FRAME,BACKUP CAP TYPE2 SP-300
13	22195116 -00	FRAME,FRONT CAP SP-300
14	22195114 -00	FRAME,MAIN CAP SP-300
15	22195115 -00	FRAME,SIDE CAP SP-300
16	21685122 -00	GEAR,S10S20
17	21685120 -00	GEAR,S34S4.3
18	22135616 -00	GUIDE,CAP-CASE FJ-540
19	22135614 -00	GUIDE,SIDE FRAME FJ-540
20	21655264 -00	HOLDER,T-SPRING SP-300
21	21645109 -00	HOOK,CAP CASE TYPE2 SP-300
22	22435106 -00	MOTOR,103-593-1041
23	21575126 -00	NUT,TABLE FJ-540
24	22055602 -00	PLATE,NUT SP-300
25	22055596 -00	PLATE,PUMP MOTOR CAP SP-300
26	22055597 -00	PLATE,SHUTTER TABLE SP-300
27	22055595 -00	PLATE,TABLE MOTOR CAP SP-300
28	22565406 -00	PULLEY T20S5(B7)
29	11889107 -00	R-BEARING,D10S6(B3FL)
30	15229506 -00	SENSOR INTERRUPTER,GP1A05A5

PARTS LIST -Main Parts-

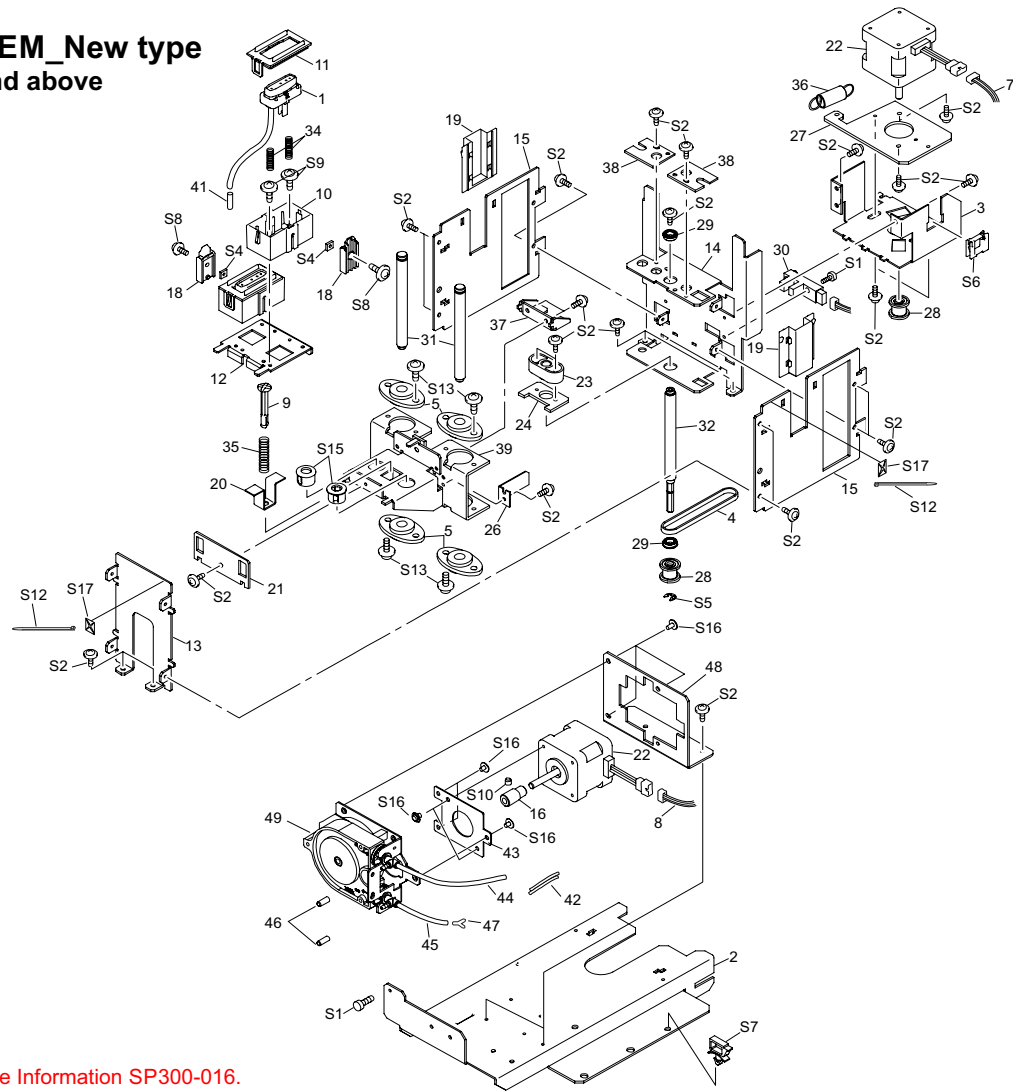
	Parts No.	Parts Name
31	22295268 -00	SHAFT,TABLE GUIDE SP-300
32	22155957 -00	SHAFT,SCREW M8 FJ-540
33	22165178 -00	SPACER,6FAI FJ-50
34	22175334 -00	SPRING,CAP-HEAD FJ-540
35	22175326 -00	SPRING,TABLE FJ-540
36	22175324 -00	SPRING,T-MOTOR FJ-540
37	22715364 -00	STAY,NUT SP-300
38	22245104 -00	STOPPER,GUIDE SHAFT SP-300
39	21965137 -00	TABLE,CAP CASE SP-300
40	7576340000 -03	SC-500 PUMP ASS'Y FOR SOL INK
41	22805477 -00	ASS'Y,TUBING 1.4*30MM FJ-540
42	22805572 -00	ASS'Y, TUBING 2*80MM SP-540V

PARTS LIST -Supplemental Parts-

	Parts No.	Parts Name
S1	31049171 -00	SCREW, CAP M3*12 NI
S2	31289102 -00	CUPSCREW, M3*6 NI
S3	31289108 -00	CUPSCREW, M3*8 NI
S4	31109601 -00	NUT,SQUARE M3 FE CC
S5	31149703 -00	RING,E-RING ETW-4 UNI-C
S6	31409702 -00	SADDLE,LOCKING EDGE LES-1010
S7	31409801 -00	SADDLE,LOCKING WIRE LWS-0711Z
S8	31019116 -00	SCREW,BINDING M3*6 BC
S9	31019115 -00	SCREW,BINDING M3*4 BC
S10	31199701 -00	SCREW,SET WP M3*3 C
S12	31329601 -00	CLAMP,INSULOK T-18S
S13	31289110 -00	CUPSCREW,4*8 BC
S14	31329501 -00	CLAMP,PUSH MOUNT RT30SSF5
S15	31029105 -00	BUSH,NB-8

1-11 PUMP SYSTEM_New type
S/No. ZV14620 and above

REVISED 5



*REVISED 5: Refer to Service Information SP300-016.

PARTS LIST -Main Parts-

	Parts No.	Parts Name
1	12809448 -00	ASS'Y,CAP-TOP FJ-540
2	22845109 -00	BASE,BOTTOM CAP SP-300
3	22845108 -00	BASE, TABLE MOTOR CAP SP-300
4	21925137 -00	BELT,166P2M4-530
5	12529101 -00	BUSH,80FL-08
7	23415121 -00	CABLE ASS'Y,CAP MOTOR SP-300
8	23415122 -00	CABLE ASS'Y,PUMP MOTOR SP-300
9	22335146 -00	CAP,T-SPRING FJ-540
10	21365121 -00	CASE,CAP-TOP FJ-540
11	22025671 -00	COVER,CAP-CASE FJ-540
12	22195152 -00	FRAME,BACKUP CAP TYPE2 SP-300
13	22195116 -00	FRAME,FRONT CAP SP-300
14	22195114 -00	FRAME,MAIN CAP SP-300
15	22195115 -00	FRAME,SIDE CAP SP-300
16	21685122 -00	GEAR,S10S20
18	22135616 -00	GUIDE,CAP-CASE FJ-540
19	22135614 -00	GUIDE,SIDE FRAME FJ-540
20	21655264 -00	HOLDER,T-SPRING SP-300
21	21645109 -00	HOOK,CAP CASE TYPE2 SP-300
22	22435106 -00	MOTOR,103-593-1041
23	21575126 -00	NUT,TABLE FJ-540
24	22055602 -00	PLATE,NUT SP-300
26	22055597 -00	PLATE,SHUTTER TABLE SP-300
27	22055595 -00	PLATE,TABLE MOTOR CAP SP-300
28	22565406 -00	PULLEY T20S5(B7)
29	11889107 -00	R-BEARING,D10S6(B3FL)
30	15229506 -00	SENSOR INTERRUPTER,GP1A05A5
31	22295268 -00	SHAFT,TABLE GUIDE SP-300
32	22155957 -00	SHAFT,SCREW M8 FJ-540
34	22175334 -00	SPRING,CAP-HEAD FJ-540

PARTS LIST -Main Parts-

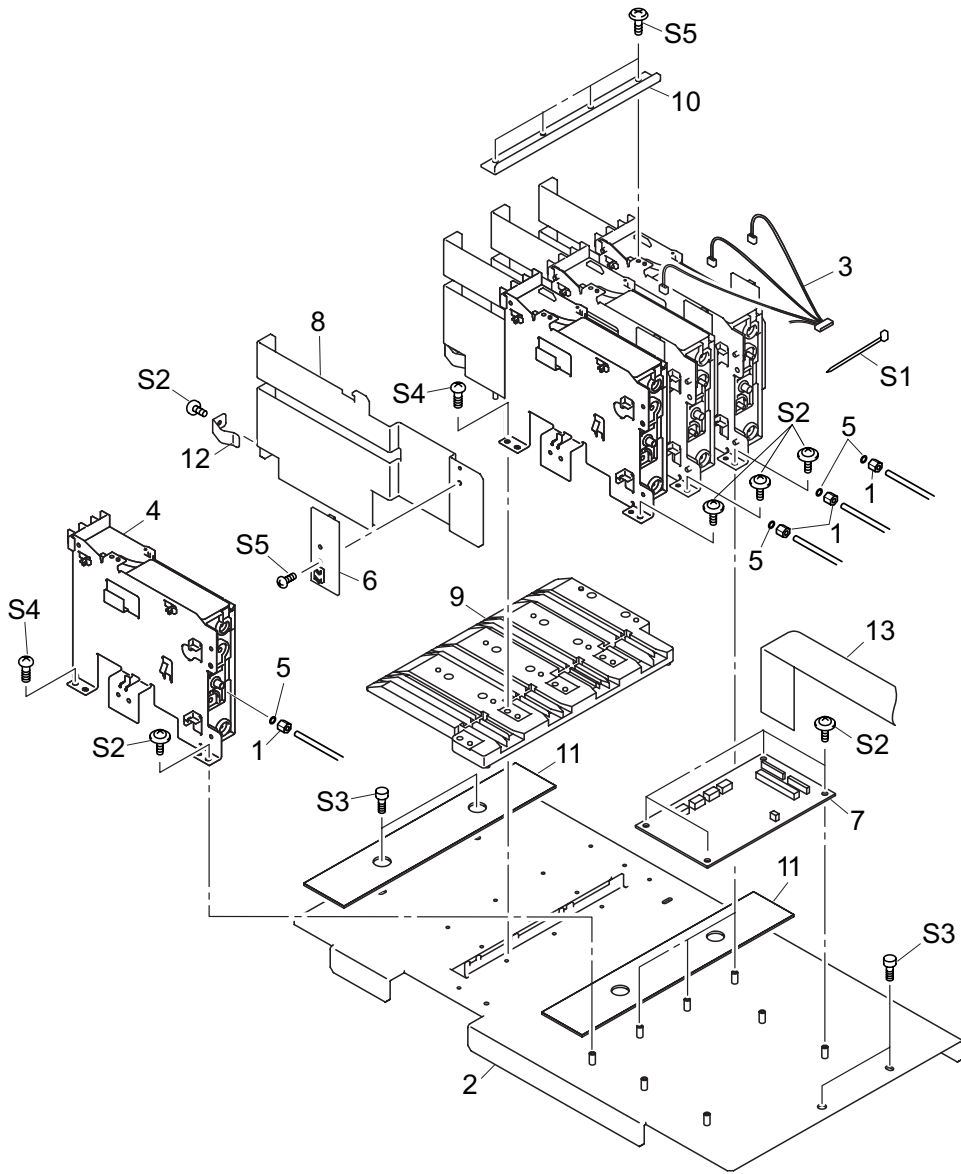
	Parts No.	Parts Name
35	22175326 -00	SPRING, TABLE FJ-540
36	22175324 -00	SPRING, T-MOTOR FJ-540
37	22715364 -00	STAY,NUT SP-300
38	22245104 -00	STOPPER,GUIDE SHAFT SP-300
39	21965137 -00	TABLE,CAP CASE SP-300
41	22805477 -00	ASS'Y,TUBING 1.4*30MM FJ-540
42	22805572 -00	ASS'Y, TUBING 2*80MM SP-540V
43	1000001585	PLATE,P-MOTOR XC-540
44	1000002119	TUBE,EPDM ID2-OD4 310MM
45	1000002122	TUBE,EPDM ID2-OD4 100MM
46	1000002019	STOPPER,PUMP XC-540
47	1000002095	FITTING,TUBE PP VFY206
48	1000002094	BASE,PUMP ASSY SP-540V
49	6700319010	ASSY,PUMP SUB XC-540

REVISED 5

PARTS LIST -Supplemental Parts-

	Parts No.	Parts Name
S1	31049171 -00	SCREW, CAP M3*12 NI
S2	31289102 -00	CUPSCREW, M3*6 NI
S4	31109601 -00	NUT,SQUARE M3 FE CC
S5	31149703 -00	RING,E-RING ETW-4 UNI-C
S6	31409702 -00	SADDLE,LOCKING EDGE LES-1010
S7	31409801 -00	SADDLE,LOCKING WIRE LWS-0711Z
S8	31019116 -00	SCREW,BINDING M3*6 BC
S9	31019115 -00	SCREW,BINDING M3*4 BC
S10	31199701 -00	SCREW,SET WP M3*3 C
S12	31329601 -00	CLAMP,INSULOK T-18S
S13	31289110 -00	CUPSCREW,4*8 BC
S15	31029105 -00	BUSH,NB-8
S16	31289109	CUPSCREW SET,M3*4 NI 100 PCS.
S17	31499102	CLAMP,BASE KNP-20

1-12 INK SYSTEM



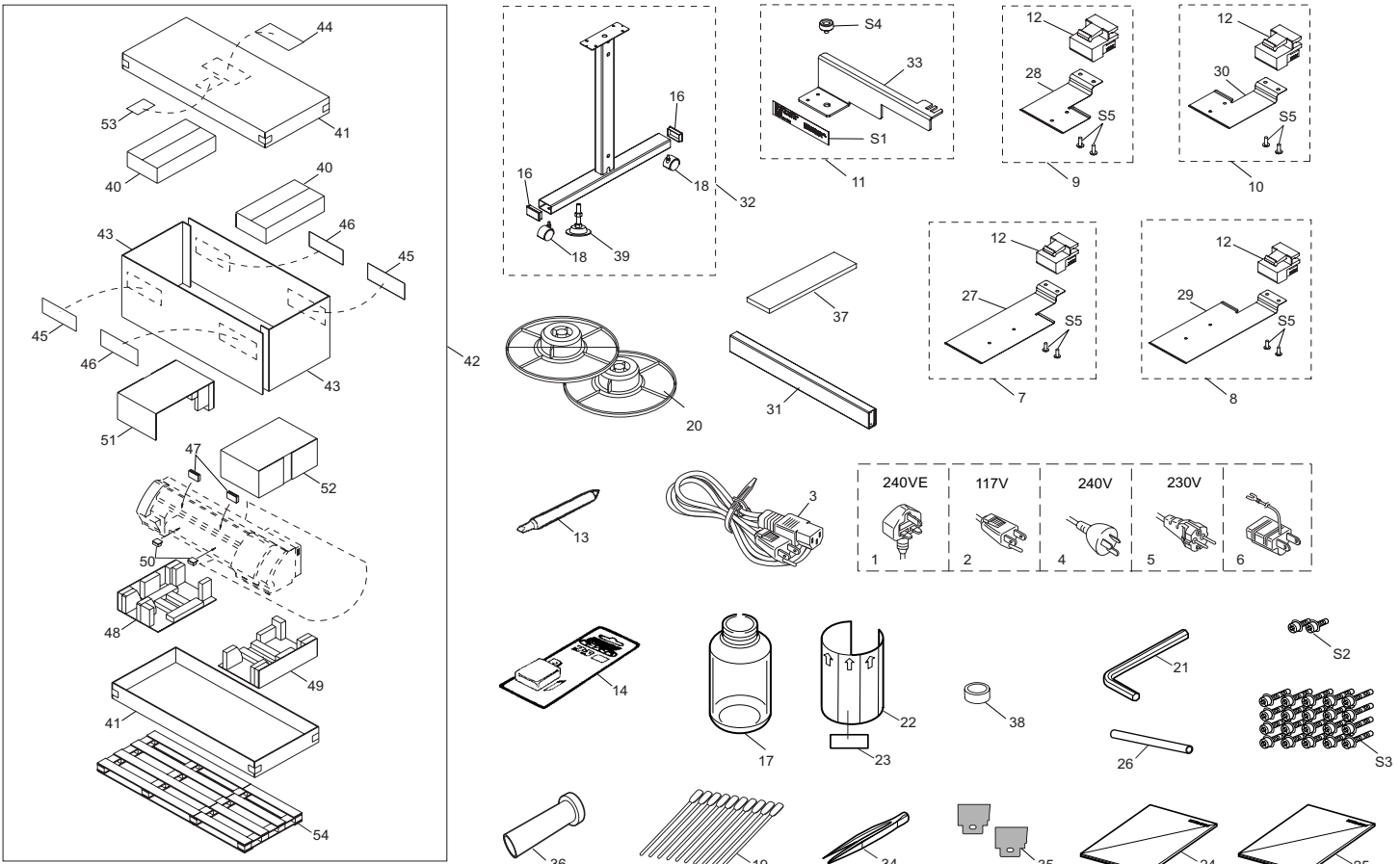
PARTS LIST -Main Parts-

Parts No.	Parts Name
1	11909133 -00 ADAPTER,SCREW 2FAI FJ-50
2	22845106 -00 BASE,INK CARTRIDGE SP-300
3	23415134 -00 CABLE ASS'Y,INK JUNCTION SP-300
4	11659218 -00 HOLDER,I/C SC-500
5	11659149 -00 HOLDER,RING O 2FAI FJ-50
6	W8406050B0 -00 INK JUNCTION BOARD SP-300
7	W8406050A0 -00 JUNCTION BOARD 2 SP-300
8	22055594 -00 PLATE,INK CARTRIDGE HOLDER SP-300
9	22055435 -00 PLATE,INK FJ-500
10	22055593 -00 PLATE,INK JOINT SP-300
11	21475153 -00 SHEET,INK CARTRIDGE SP-300
12	22625103 -00 SPRING,PRESS CARTRIDGE SP-300
13	23475216 -00 CABLE CARD,40P1 1400L BB SP-300

PARTS LIST -Supplemental Parts-

Parts No.	Parts Name
S1	31329601 -00 CLAMP,INSULOK T-18S
S2	31289102 -00 CUPSCREW, M3*6 NI
S3	31289111 -00 CUPSCREW, M4*6 NI
S4	31019120 -00 SCREW,BINDING M3*15 BC
S5	31019803 -00 SCREW,BINDING S-TIGHT M3*6 BC

1-13 ACCESSORY & STAND Revised 2



PARTS LIST -Main Parts-

	Parts No.	Parts Name	SP-300	SP-300V
1	13499111 -00	AC CORD H05VV-F 240VE 10A S	*	*
2	13499109 -00	AC CORD SJT 117V 10A 3PVC	*	*
3	23495117 -00	CABLE-AC,VCTF 100V 12A 3P-S	*	*
4	23495124 -00	AC-CORD 3ASL/100 240VA 10A SAA	*	*
5	23495125 -00	AC-CORD H05VV 230V 10A S	*	*
6	13499209 -00	ADAPTER PLUG (100V)	*	*
7	22805503 -00	ASS'Y, LONG MEDIA CLAMP L SP-300	*	*
	22805573 -00	ASS'Y, LONG MEDIA CLAMP L SP-540V	*	*
8	22805504 -00	ASS'Y, LONG MEDIA CLAMP R SP-300	*	*
	22805574 -00	ASS'Y, LONG MEDIA CLAMP R SP-540V	*	*
9	22805505 -00	ASS'Y, SHORT MEDIA CLAMP L SP-300	*	*
	22805575 -00	ASS'Y, SHORT MEDIA CLAMP L SP-540V	*	*
10	22805506 -00	ASS'Y, SHORT MEDIA CLAMP R SP-300	*	*
	22805576 -00	ASS'Y, SHORT MEDIA CLAMP R SP-540V	*	*
11	22805507 -00	ASS'Y,CARRIAGE RETAINER SP-300	*	*
12	22845112 -00	BASE, MEDIA CLAMP SP-300	*	*
13	21845104 -00	BLADE,NAG-5025LC	*	*
14	11849102 -00	BLADE,OLFA AUTO CUTTER XB10	*	*
16	12339128 -00	CAP,R 7545 B	*	*
17	11369115 -00	CASE,PP BOTTLE	*	*
18	12329504 -00	CASTER,DNB50-B	*	*
19	ST-037 -00	CLEANER,STICK TX712A	*	*
20	21995112 -00	FLANGE,GUIDE PNS-501	*	*
21	22565614 -00	HEXAGONAL WRENCH 6	*	*
22	22535144 -00	LABEL,DRAIN BOTTLE #LA29	*	*
23	22535330 -00	LABEL,WARNING SOL INK #LA396	*	*
24	26015442 -00	MANUAL,USE EN SP-300	*	*
	26015506 -00	MANUAL,USE EN SP-300V COMMON	*	*
	26015511 -00	MANUAL,INS EN SP-300V ECO-SOL	*	*
	26015441 -00	MANUAL,USE JP SP-300	*	*
	26015505 -00	MANUAL,USE JP SP-300V COMMON	*	*
	26015510 -00	MANUAL,INS JP SP-300V ECO-SOL	*	*
25	26015452 -00	MANUAL,USE EN SP-300 DRIVER	*	*
	26015508 -00	MANUAL,USE EN SP-300V DRIVER	*	*
	26015451 -00	MANUAL,USE JP SP-300 DRIVER	*	*
	26015507 -00	MANUAL,USE JP SP-300V DRIVER	*	*
26	22155133 -00	PIPE,TOOL D9*L150 FJ-540	*	*
27	22055623 -00	PLATE, LONG CLAMP MEDIA L SP-300	*	*
	22055691 -00	PLATE, LONG CLAMP MEDIA L SP-540V	*	*

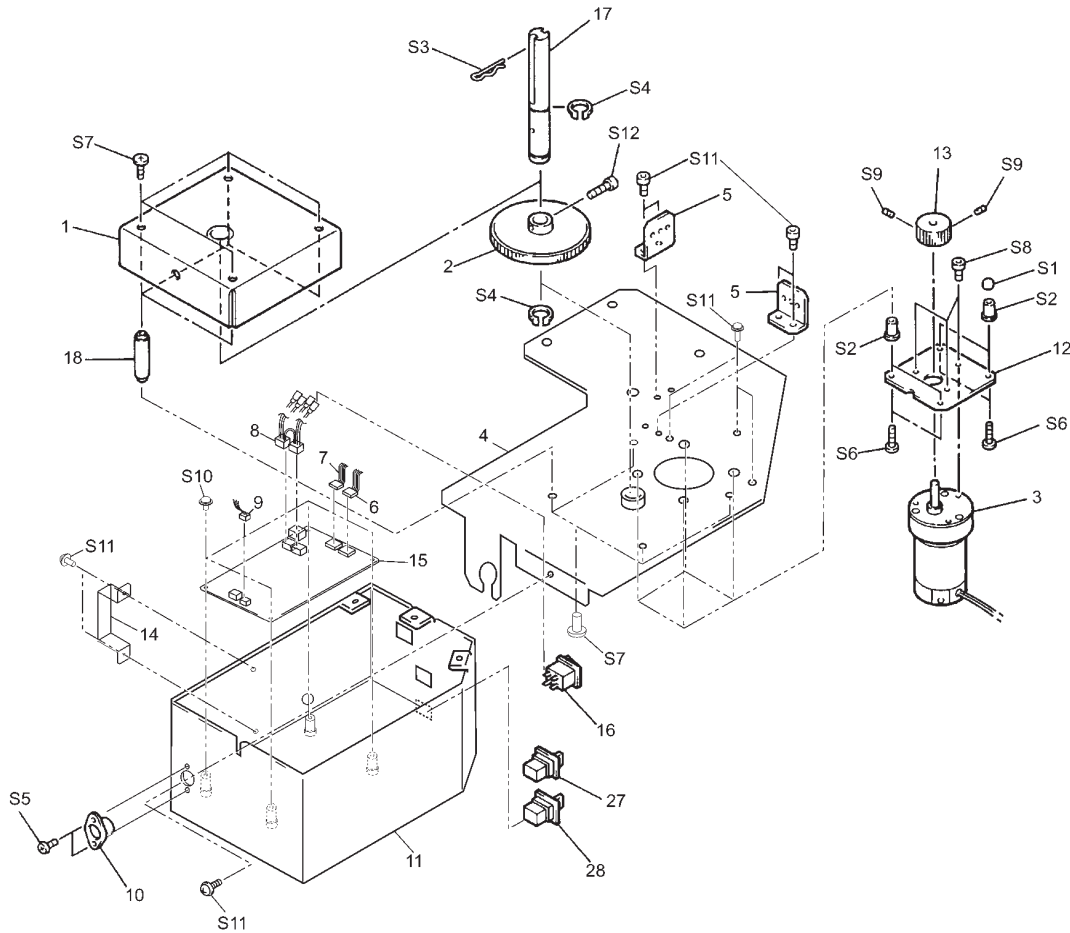
PARTS LIST -Main Parts-

	Parts No.	Parts Name	SP-300	SP-300V
28	22055587 -00	PLATE,SHORT CLAMP MEDIA L SP-300	*	*
	22055692 -00	PLATE,SHORT CLAMP MEDIA L SP-540V	*	*
29	22055624 -00	PLATE, LONG CLAMP MEDIA R SP-300	*	*
	22055693 -00	PLATE, LONG CLAMP MEDIA R SP-540V	*	*
30	22055588 -00	PLATE,SHORT CLAMP MEDIA R SP-300	*	*
	22055694 -00	PLATE,SHORT CLAMP MEDIA R SP-540V	*	*
31	22035188 -00	STAY,STAND SP-300	*	*
32	22035200 -00	STAND,LEG 2 SP-300	*	*
33	22245103 -00	RETAINER,CARRIAGE SP-300	*	*
34	12569656 -00	TWEEZERS PTS-01	*	*
35	11379105 -00	WIPER,HEAD ASP FJ-50	*	*
36		STAY MOUNTING BLACKET	*	*
37	21545195 -00	PAD,WIPER UNDER TYPE2 SP-300	*	*
38	22335143 -00	CAP,EPDM	*	*
39	22035201 -00	STAND,ADJUSTER SP-300	*	*
40	22605160 -00	CARTON,ACCESSORY SP-300	*	*
41	22605159 -00	CARTON,COVER SP-300	*	*
42	22605451 -00	CARTON,SET SP-300	*	*
43	22605158 -00	CARTON,SLEEVE SP-300	*	*
44	22535281 -00	LABEL,CARTON BEWARE 2 #365	*	*
45	22535440 -00	LABEL,CARTON SP-300 #LA633	*	*
46	22535357 -00	LABEL,USE FORKLIFT #LA435	*	*
47	22635128 -00	PAD,COVER FRONT SP-300	*	*
48	21545173 -00	PAD,L-LEFT SP-300	*	*
49	21545174 -00	PAD,L-RIGHT SP-300	*	*
50	21545178 -00	PAD,SPACER RAIL SP-300	*	*
51	21545176 -00	PAD,U-LEFT SP-300	*	*
52	21545175 -00	PAD,U-RIGHT SP-300	*	*
53	22735129 -00	STICKER,REP JP/EN SP-300	*	*
54	21445111 -00	TRAY,SKID SP-300	*	*

PARTS LIST -Supplemental Parts-

*	Parts No.	Parts Name
S1	31279201 -00	LABEL,REPACKAGE #LA16
S2	31049166 -00	SCREW,CAP M6*12 NI
S3	31049157 -00	SCREW,CAP M6*20 BC+PW+SW
S4	31139104 -00	SCREW,PLAPOINT M4*6 BK FE
S5	31229103 -00	SCREW,TRUSS M2*6 BC

1-14 TUC-1 CONTROLLER Revised 2



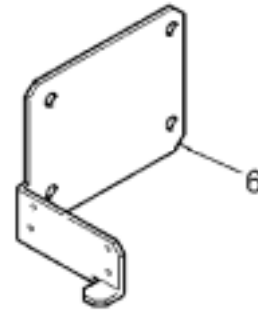
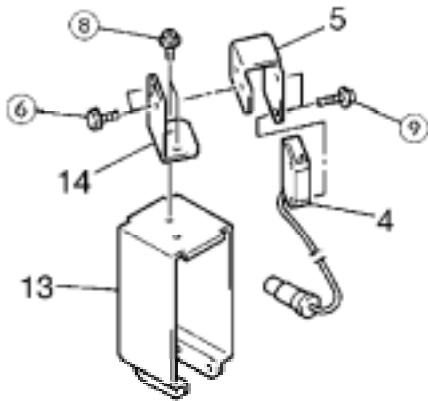
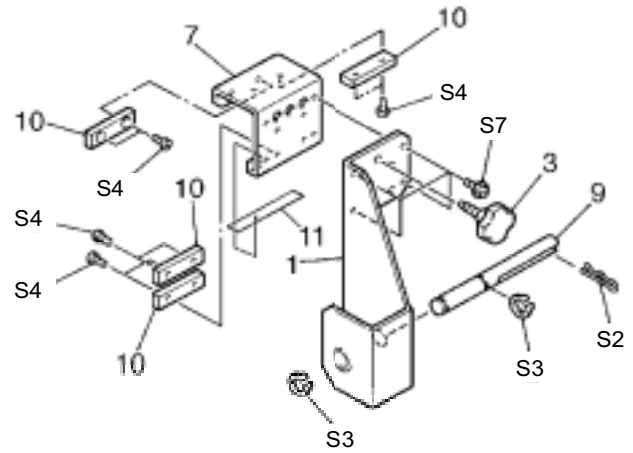
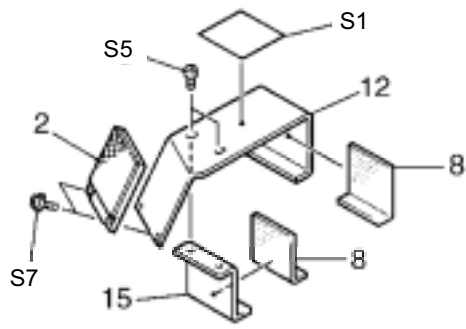
PARTS LIST -Main Parts-

	Parts No.	Parts Name
1	22805225-00	ASSY,COVER GEAR TUC-60/70
2	22805229-00	ASSY,GEAR S80S60 TUC-60/70
3	22805226-00	ASSY,MOTOR TUC-60/70
4	22805485-00	ASSY,FRAME R TUC-1
5	21985112-00	BRACKET,TUC-60/70
6	23505370-00	CABLE-ASSY 3P FBSW TUC-60/70
7	23505371-00	CABLE-ASSY 3P MODESW TUC-60/70
8	23505372-00	CABLE-ASSY 4P POWER TUC-60/70
9	23505373-00	CABLE-ASSY DIN TUC-60/70
10	13369134-00	CONNECTOR TCS-2230-01-1101
11	22025669-00	COVER,TUC-1
12	21995107-00	FLANGE,MOTOR TUC-60/70
13	21685115-00	GEAR,S24S6(B6.5C12) TUC-60/70
14	21655244-00	HOLDER,ADAPTER TUC-1
15	7599609000-00	MAIN BOARD ASS'Y TUC-1
16	13129170-00	POWER SW AJ7201B
17	22295148-00	SHAFT,M4TAP TUC-60/70
18	22295149-00	SHAFT,SUPPORT TUC-60/70
19	13119310-00	SW,M-2013J-G
20	13119311-00	SW,M-2018J-G

PARTS LIST -Supplemental Parts-

	Parts No.	Parts Name
S1	31049159-00	CAP,DIPPING VCP-3 BK
S2	31109501-00	NUT,WELL-NUT B-832
S3	31119701-00	PIN,SNAP M14 SUS
S4	31149502-00	RING,EXTERNAL C STW-14 SUS
S5	31019135-00	SCREW,BINDING M3*6 NI
S6	31019129-00	SCREW,BINDING M4*15 BC
S7	31019151-00	SCREW,BINDING M5*10 BC
S8	31049120-00	SCREW,CAP M4*6 BC
S9	31199701-00	SCREW,SET WP M3*3 C
S10	31239101-00	SCREW,W-SEMS M3*6 BC
S11	31239107-00	SCREW,W-SEMS M4*10 BC
S12	31049136-00	SCREW,CAP M4*20 BC

1-15 TUC-1 OTHERS Revised 2



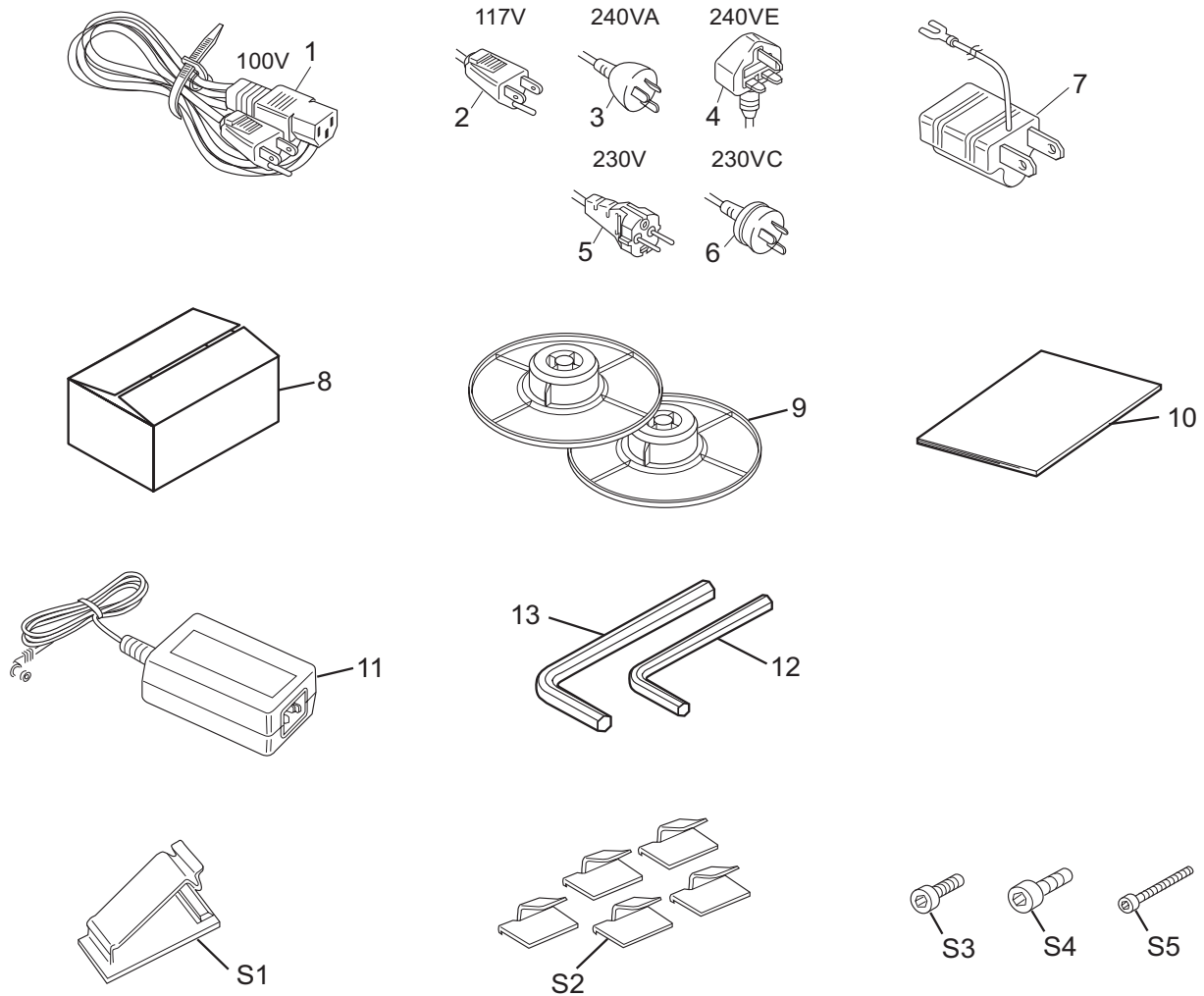
PARTS LIST -Main Parts-

Parts No.	Parts Name
1	22805231-00 ASS'Y,ARM TUC-60/70
2	22805227-00 ASS'Y,MIRROR TUC-60/70
3	22805230-00 ASS'Y,SCREW TUC-60/70
4	22805228-00 ASS'Y,SENSOR TUC-60/70
5	21985113-00 BRACKET,SENSOR TUC-60/70
6	22115714-00 FRAME,L TUC-60/70
7	21655139-00 HOLDER,SLIDER TUC-60/70
8	21545125-00 PAD,STAY TUC-60/70
9	22295147-00 SHAFT,TUC-60/70
10	22185103-00 SLIDER,1 TUC-60/70
11	22185102-00 SLIDER,GUIDE TUC-60/70
12	22715134-00 STAY,MIRROR TUC-60/70
13	22715131-00 STAY,SENSOR LOW TUC-60/70
14	22715132-00 STAY,SENSOR UP TUC-60/70
15	22135337-00 STOPPER,MIRROR TUC-60/70

PARTS LIST -Supplemental Parts-

Parts No.	Parts Name
S1	31279149-00 LABEL DO NOT KICK
S2	31119701-00 PIN,SNAP M14 SUS
S3	31149503-00 RING,C CTW-14 SUS
S4	31019116-00 SCREW,BINDING M3*6 BC
S5	31049112-00 SCREW,CAP M4*10 BC
S6	31179902-00 SCREW,UREA M3*6 N-1 BK
S7	31239107-00 SCREW,W-SEMS M4*10 BC
S8	31239101-00 SCREW,W-SEMS M3*6 BC
S9	31239104-00 SCREW,W-SEMS M3*15 BC

1-16 TUC-1 ACCESSORIES Revised 2



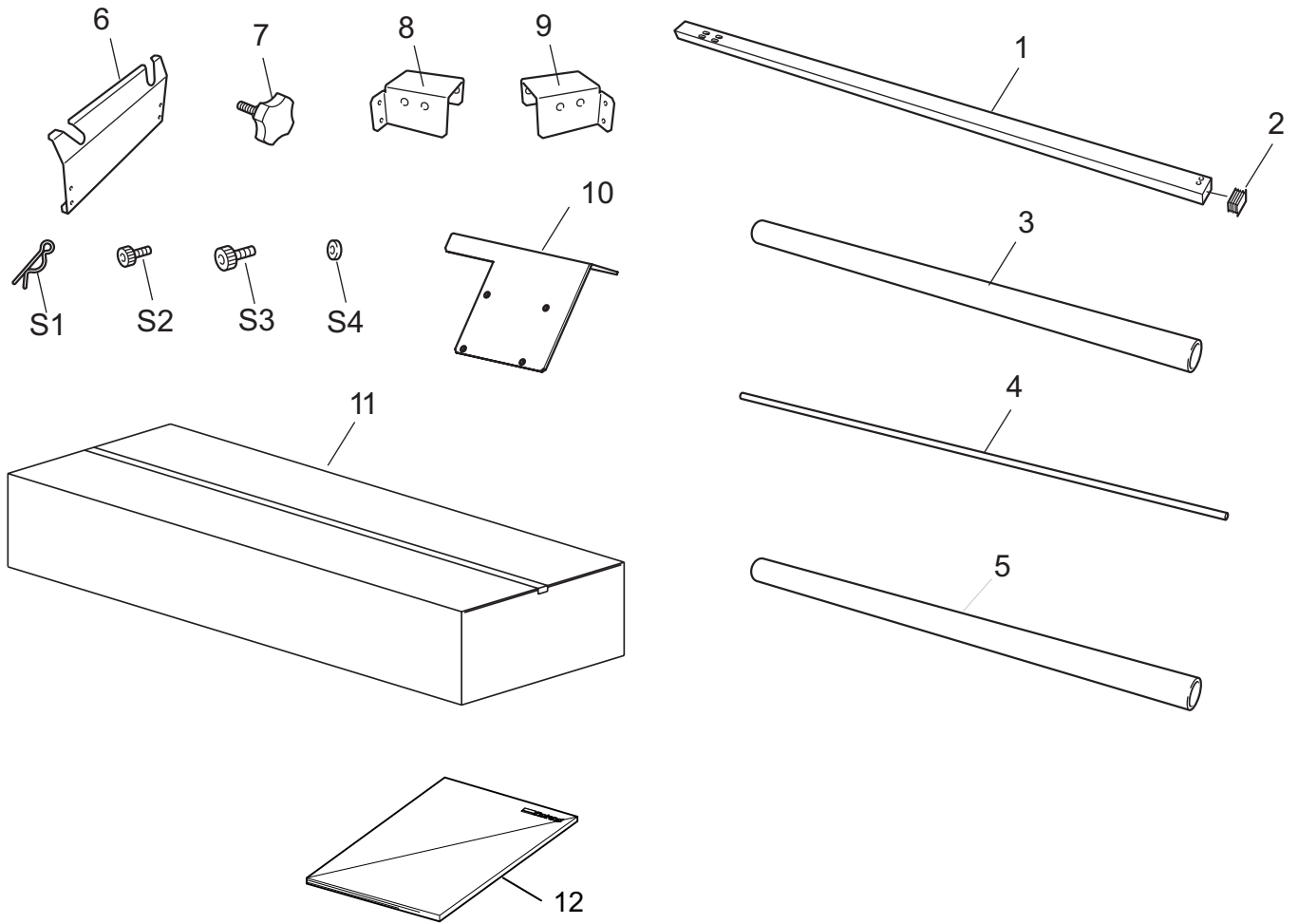
PARTS LIST -Main Parts-

	Parts No.	Parts Name
1	23495214-00	AC CORD VCTF 100V 7A 3P-S
2	13499109-00	AC CORD SJT 117V 10A 3PVC
3	23495125-00	AC CORD H05VV 230V 10A S
4	23495124-00	AC CORD 3ASL/100 240VA 10A SAA
5	13499111-00	AC CORD H05VV-F 240VE 10A S
6	13439801-00	CABLE-AC 3P CHINA 10A/250V S
7	13499209-00	ADAPTER PLUG (100V)
8	22605275-00	CARTON,TUC-60/70
9	21995106-00	FLANGE,GUIDE 2 PNS-70
10	26015383-00	MANUAL, USE JP/EN TUC-1
11	22425111-00	POWER UNIT,AC-ADP.DCP-801
12	21935130-00	TOOL,HEXAGON 3 ZN
13	21935131-00	TOOL,HEXAGON 6 ZN

PARTS LIST -Supplemental Parts-

	Parts No.	Parts Name
S1	31379103-00	CLAMP,FLAT CABLE FCN-3010
S2	31469101-00	CODE-KEEP,K-106
S3	31049147-00	SCREW,CAP M4*20 BC
S4	31049120-00	SCREW,CAP M4*6 BC
S5	31049148-00	SCREW,CAP M8*10 NI

1-17 TU-300 Revised 2



PARTS LIST -Main Parts-

	Parts No.	Parts Name
1	22645123-00	RAIL,SLIDER TU-300
2	12339121-00	CAP,50*30
3	22155140-00	PIPE,TAKE UP TU-300
4	22305105-00	GUIDE,MEDIA TU-300
5	22155136-00	PIPE,MEDIA SUPPORT TU-750
6	22325428-00	SUPPORT,MEDIA TU-550
7	22805230-00	ASS'Y,SCREW TUC-60/70
8	22805406-00	ASS'Y,SLIDER ADJUST TU-550
9		ASS'Y,SLIDER ADJUST TU-300
10	22715383-00	STAY, TUC TU-300
11	7848702000-00	CARTON,SET TU-300
12	260145448	MANUAL, SUP JP/EN TU-300

PARTS LIST -Supplementai Parts-

	Parts No.	Parts Name
S1	31119702-00	PIN SNAP M16
S2	31049120-00	SCREW,CAP 4*6 BC
S3	31049157-00	SCREW,CAP 6*20 BC SPW+WSH
S4	31249209-00	WASHER,PLAIN 4*8*0.5 BC