



## TERMS OF USE

Users of this Service Note shall be deemed to agree with the following Terms of Use.

**1. USERS**

This Service Note is only for authorized persons with user ID and password issued by Roland DG Corporation.

**2. PURPOSE**

Authorized persons can use this Service Note only for the purposes of selling and providing to the customers maintenance service of RS-640/540.

**3. REUSE**

Authorized persons shall not disclose, transfer, rent or distribute this Service Note to, or allow this Service Note to be used in any manner by, any third party other than authorized persons.

**4. REPRODUCTION**

Authorized persons shall not copy, change or alter this Service Note without permission of Roland DG Corporation.

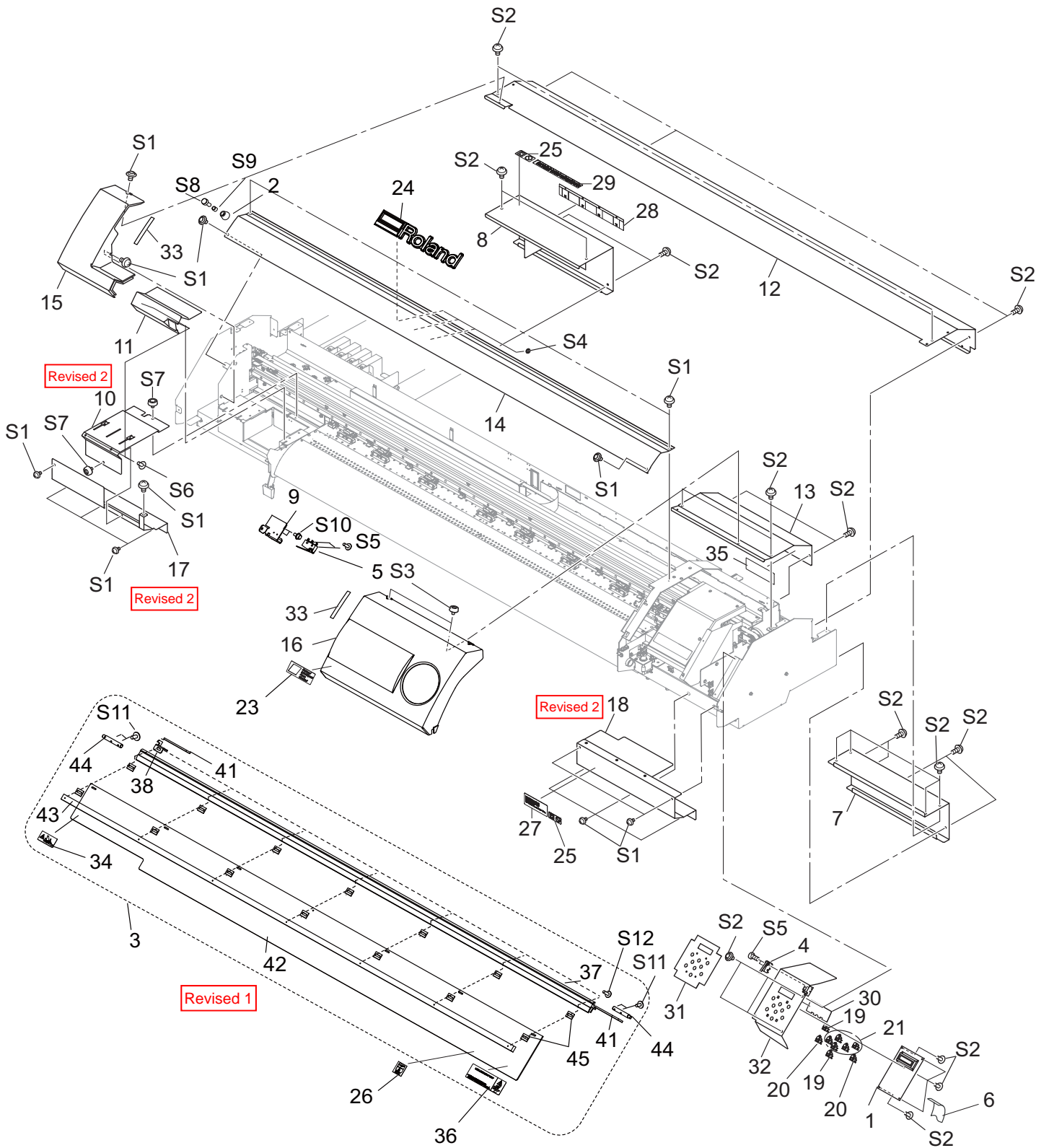
**5. EFFECT OF VIOLATION**

Regardless of circumstances, we will vigorously respond to any violation hereof, through legal action.

**Roland DG Corporation**

# 1 Structure & Spare Parts

## 1-1 COVER



# 1-1 COVER

## PARTS LIST -Main Parts-

	Parts No.	Parts Name	qt.
1	W700981210	ASSY,PANEL BOARD RS-540	1
	W702406010	ASSY,PANEL BOARD VS-640I <span style="border: 1px solid red; padding: 2px;">Revised 15</span>	
2	11879107	ABSORBER TK-12	1
3	1000004743	ASSY,COVER FRONT RS-540	1
	1000004775	ASSY,COVER FRONT RS-640	
4	23505834	CABLE-ASSY MAINT-COVER SW FJ-540	1
5	1000004205	CABLE-ASSY, FRONT-COVER SW VP-540	1
6	23475212	CABLE-CARD,24P1 600L BB	1
7	1000005165	COVER,CHASSIS RS-540	1
8	1000002608	COVER,INK CARTRIDGE VP-540	1
9	1000004361	COVER,INT SW VP-540_01	1
10	1000002550	COVER,MAINTENANCE INKHEAD VP-540	1
	1000006236	COVER,MAINTENANCE INKHEAD 2 VP-540I	
11	1000004738	COVER,MAINTENANCE RS-540	1
12	1000004740	COVER,RAIL B RS-540	1
	1000004777	COVER,RAIL B RS-640	
13	1000004742	COVER,RAIL B-RIGHT RS-540	1
14	1000004744	COVER,RAIL F RS-540	1
	1000004776	COVER,RAIL F RS-640	
15	1000004737	COVER,SIDE L RS-540	1
16	1000004739	COVER,SIDE R RS-540	1
17	1000002627	COVER,UNDER L VP-540	1
	1000006239	COVER,UNDER L 2 VP-540I <span style="border: 1px solid red; padding: 2px;">Revised 2</span>	
18	1000002628	COVER,UNDER R VP-540	1
	1000006240	COVER,UNDER R 2 VP-540I <span style="border: 1px solid red; padding: 2px;">Revised 2</span>	
19	22495102	KEY TOP,CLEAR GX-24	2
20	1000004754	KEY TOP,GREEN RS-540	2
21	22495101	KEY TOP,WHITE GX-24	5
<del>22</del>	<del>22535460</del>	<del>LABEL,ENERGY STAR COLOR #LA668</del> <span style="border: 1px solid red; padding: 2px;">Revised 15</span>	<del>1</del>
23	1000004160	LABEL, REFLECTION XC-540#LA1041	1
24	1000004741	LABEL,EMBLEM LOGO ROLAND 2	1
25	1000001099	LABEL,HARMFUL FIRE #LA915	2
26	1000003489	LABEL,MARK ECO#LA1014	1
27	1000005208	LABEL,CLAMP MEDIA #LA1091	1
28	22535441	LABEL,SET INK SP-300 #LA634	1
29	1000001620	LABEL,USE ECO-SOL MAX#LA924	1
30	1000003029	SHEET,LCD VP-540	1
31	1000004753	SHEET,PANEL RS-540	1
32	1000004752	STAY,PANEL RS-540	1
33	1000005166	CUSHION,COVER SIDE RS-540	2
34	22535286	LABEL,CAUTION COVER #LA265	1
35	1000003089	SHEET,FRAME SUPPORT RAIL VP-540	1
36	1000005697	LABEL,CAUTION RS-540#LA1089	1

Revised 15 : Refer to the Service information RS640-012.

	Parts No.	Parts Name	qt.
37	1000004195	FRAME,COVER F VP-540	1
	1000005897	FRAME,COVER F RS-640	
38	1000004200	HOOK,INT SW VP-540	1
41	1000004199	PAD, STOPPER VP-540	2
42	1000004197	PLATE,COVER F VP-540	1
	1000005899	PLATE,COVER F RS-640	
43	1000004196	PLATE,NUT COVER F VP-540	1
	1000005898	PLATE,NUT COVER F RS-640	
44	1000004198	SHAFT,COVER F VP-540	2
45	21425110	WASHER,COVER FJ-50	14

Revised 2

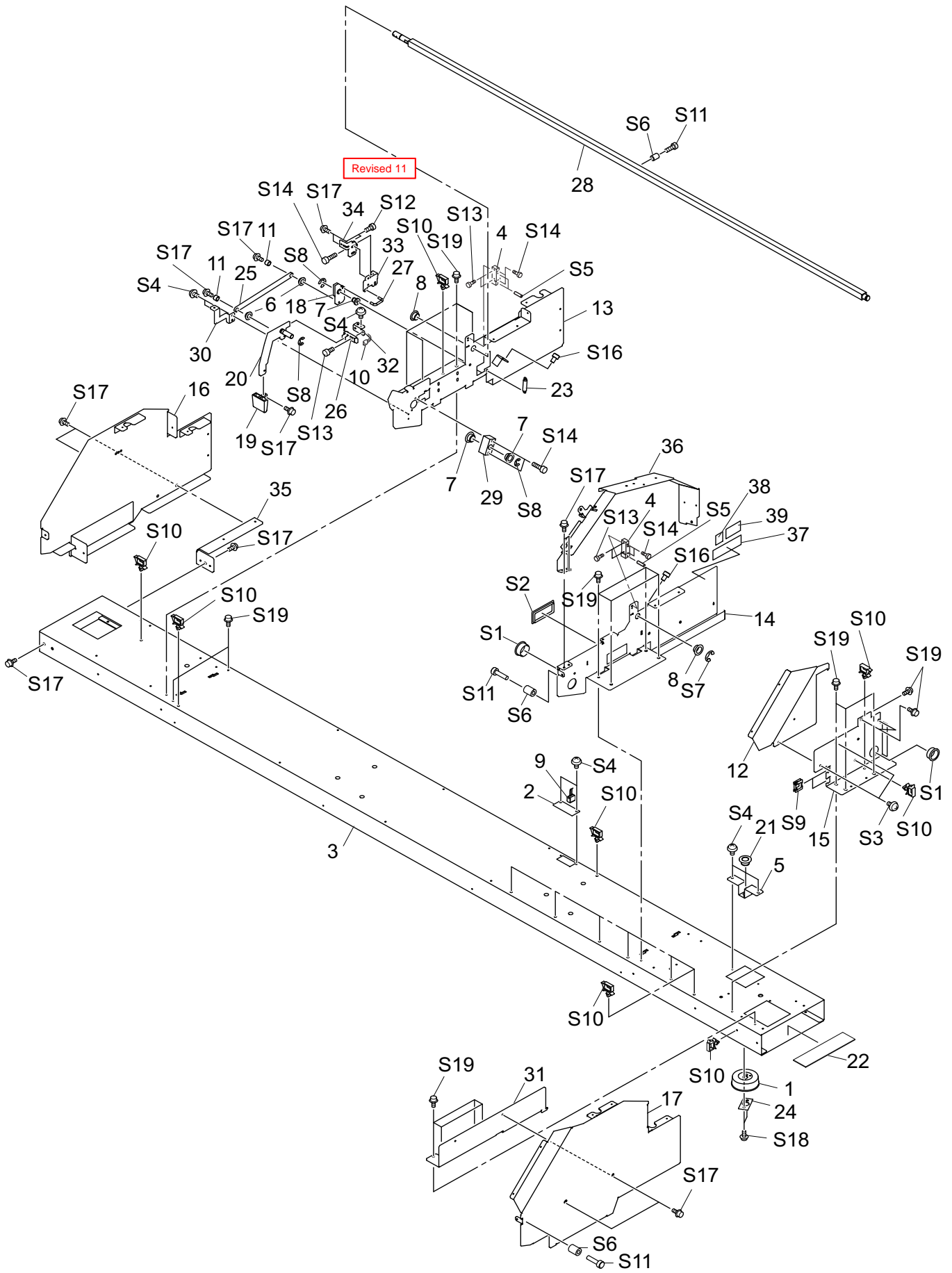
Revised 2 No.10,17 : Refer to the Service information RS640-003.

## PARTS LIST -Supplemental Parts-

	Parts No.	Parts Name	qt.
S1	31289111AS	CUPSCREW SET, M4*6 NI 100 PCS.	16
S2	31289109AS	CUPSCREW SET,M3*4 NI 100 PCS.	28
S3	31139103	PLAPOINT,FE4*6 WH	2
S4	31149601	RING SET,PUSH-ON CS CSTW-3 100 PCS	3
S5	31019149	SCREW SET,BINDING M2.3*8 3CBC 100PCS	4
S6	31019703	SCREW,BINDING P-TIGHT M3*8 3C 100P	4
S7	31139104	SCREW,PLAPOINT M4*6 BK FE	2
S8	31049107AS	SCREW SET,CAP M3*12 3CBC 20 PCS	1
S9	31029816AS	BUSH SET,ROLL 3*4 100 3C PCS.	1
S10	31049169AS	SCREW SET,CAP M4*8 3CBC+PW 20PCS	2
S11	31289102AS	CUPSCREW SET,M3*6 NI 50 PCS.	4
S12	31289112AS	CUPSCREW SET,M3*10 NI 100 PCS.	6

\* qt. indicates the number of parts that is described in the figure.

# 1-2 FRAME



# 1-2 FRAME

## PARTS LIST -Main Parts-

	Parts No.	Parts Name	qt.
1	7520501000	ASSY,CAP BOTTLE 2 FJ-52	1
2	W700981240	ASSY,FAN JUNCTION BOARD RS-540	1
3	1000002527	BASE,BOTTOM VP-540	1
	1000004766	BASE,BOTTOM RS-640	1
4	1000002589	BASE,RAIL VP-540	2
5	21985140	BRACKET,INK CATCH TANK SP-540V	1
6	12159573	BUSH,80F-0603	2
7	12159563	BUSH,80F-1006	3
8	12159508	BUSH,SHAFT OILES 80F-1206	2
9	1000002168	CABLE-ASSY,FAN VP-540	1
10	1000002176	CABLE-ASSY,PINCH U/D SENSOR VP-540	1
11	21745109	COLLAR,LEVER FJ-540	2
12	1000004731	COVER,SCAN MOTOR RS-540	1
13	1000002528	FRAME,MIDDLE L VP-540	1
14	1000005167	FRAME,MIDDLE R RS-540	1
15	1000002548	FRAME,SCAN MOTOR VP-540	1
16	1000002518	FRAME,SIDE L VP-540	1
17	1000004730	FRAME,SIDE R RS-540	1
18	22305101	GUIDE,LEVER SP-300	1
19	1000001601	KNOB,XC-540	1
20	1000002556	LEVER,CAM PINCH VP-540	1
21	22155763	OILES BUSH 80F-0806	1
22	1000003088	PAD,BASE BOTTOM VP-540	1
23	22175105	PINCH ROLL SPRING	1
24	22055474	PLATE,INK CATCH TANK FJ-52	1
25	1000002609	PLATE,LEVER LINK VP-540	1
26	15229506	SENSOR INTERRUPTER,GP1A05A5	1
27	22145393	SHAFT,JOINT PNC-960	1
28	1000002526	SHAFT,SQUARE VP-540	1
	1000004767	SHAFT,SQUARE RS-640	1
29	22035196	STAND,LEVER SP-300	1
30	1000002629	STAY,COVER UNDER VP-540	1
31	1000002558	STAY,FRAME SIDE R VP-540	1
32	1000002555	STAY,LEVER SENSOR VP-540	1
33	1000009349	STAY,PINCH LEVER ADJUST RE-640	1
34	1000009348	STAY,PINCH LEVER RE-640	1
35	1000002569	STAY,SUPPORT INKCARTRIDGE VP-540	1
36	1000004193	SUPPORT,FRAME R TYPE2 VP-540	1
37	22535444	LABEL,READ MANUAL #LA637	1

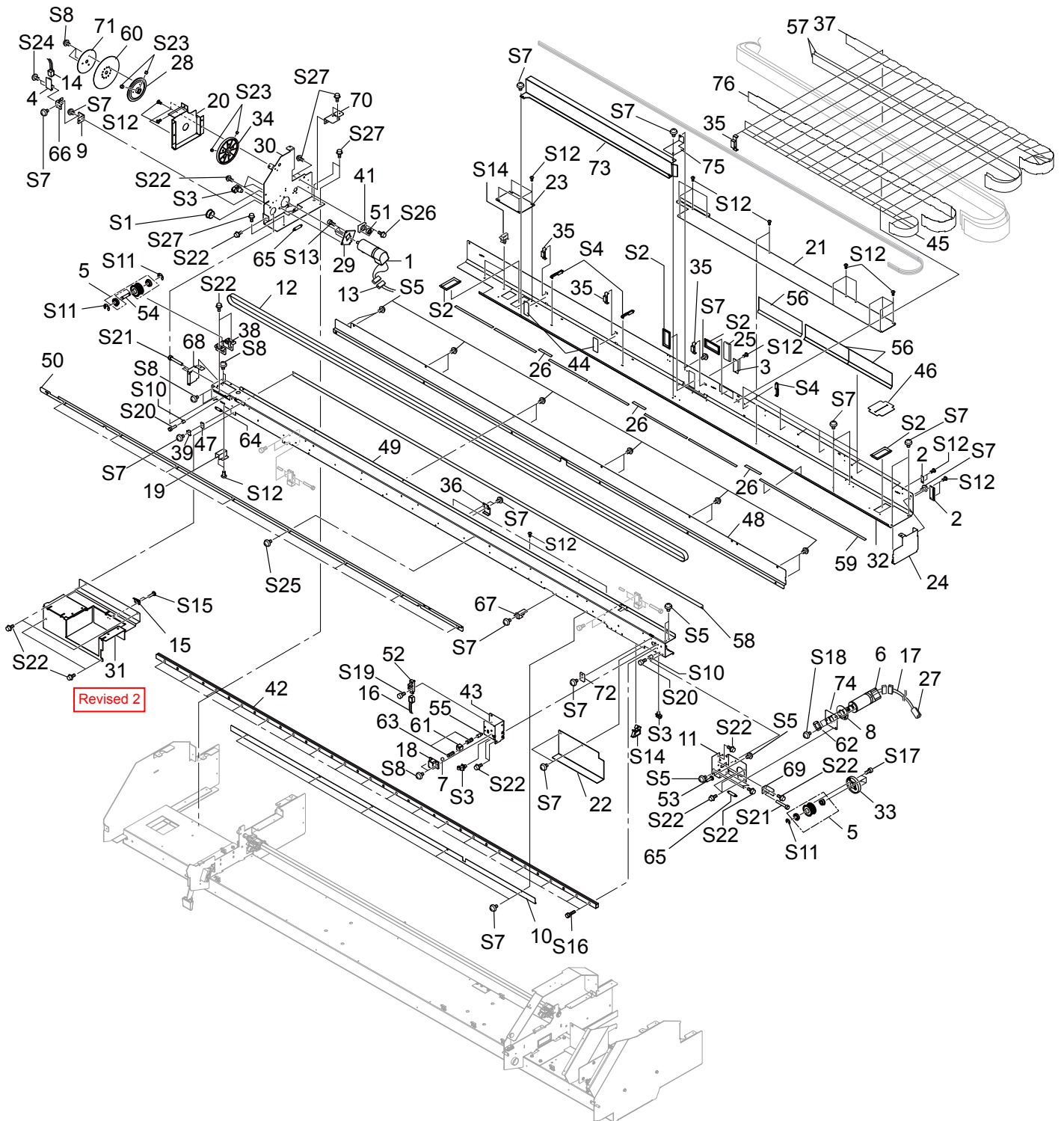
## PARTS LIST -Supplemental Parts-

	Parts No.	Parts Name	qt.
S1	31029101	BUSH,NB-19	2
S2	31029106	BUSH,SQUARE SB-6025	1
S3	31289111AS	CUPSCREW SET, M4*6 NI 100 PCS.	2
S4	31289109AS	CUPSCREW SET,M3*4 NI 100 PCS.	7
S5	31119904	PIN,SPRING 2.5*8 SUS STRAIGHT 50 PCS	4
S6	31129101	PIPE SET,POLYCA 3*6*8 20PCS	3
S7	31149706AS	RING SET,E-RING ETW-10 SUS 20 PCS	1
S8	31149705	RING SET,E-RING ETW-7 SUS 50PCS	3
S9	31409702	SADDLE SET,LOCKING WIRE LES-1010 20P	2
S10	31409801AS	SADDLE,LOCKING WIRE LWS-0711Z 20P	13
S11	31049171AS	SCREW SET,CAP M3*12 NI 50 PCS.	3
S12	31049142AS	SCREW SET,CAP M3*6 NI MEC 20 PCS	2
S13	31049173AS	SCREW SET,CAP M4*10 NI 50 PCS.	5
S14	31049137AS	SCREW SET,CAP M4*25 3CBC 20 PCS	7
S16	31799107	SCREW SET,CAP M4*6 NI 20PCS	2
S17	31049169AS	SCREW SET,CAP M4*8 3CBC+PW 20PCS	13
S18	31239125AS	SCREW SET,W-SEMS M3*8 SUS 50 PCS.	2
S19	31069104	SCREW,CAP M4*6+FL NI	18

\* qt. indicates the number of parts that is described in the figure.

Revised 11

# 1-3 DRIVE UNIT



# 1-3 DRIVE UNIT

## PARTS LIST -Main Parts-

	Parts No.	Parts Name	qt.
1	7876709020	ASSY,FEED MOTOR SP-540V	1
2	W700981280	ASSY,FLEX2 RS-540	1
3	W700981290	ASSY,FLEX3 RS-540	1
4	W700981250	ASSY,GRIT ENCODER BOARD RS-540	1
5	6700469030	ASSY,PULLEY VP-540	1
6	6700469020	ASSY,SCAN MOTOR VP-540	1
7	11869103	BALL,4MM	1
8	1000003822	BASE,FLANGE VP-540	1
9	1000002605	BASE,G-ENCODER SENSOR VP-540	1
10	1000005206	GUIDE,CLAMP MEDIA RS-540	1
	1000005201	GUIDE,CLAMP MEDIA RS-640	1
11	1000002533	BASE,SCAN DRIVE VP-540	1
12	1000004793	BELT,100S2M2153LW-C (RS-540用)	1
	1000004778	BELT,100S2M2413LW-C (RS-640用)	1
13	23415124	CABLE ASSY,GRIT MOTOR SP-300	1
14	1000002169	CABLE-ASSY,GRIT ENCODER VP-540	1
15	23415114	CABLE ASSY,MNT. COVER SW SP-300	1
16	1000002178	CABLE-ASSY,PRI-CAR ORG VP-540	1
17	1000002188	CABLE-ASSY,SCAN MOTOR VP-540	1
18	21365103	CASE,LOCK CJ-70	1
19	1000002646	COVER,ENCODER VP-540	1
20	1000002592	COVER,FEED GEAR VP-540	1
21	1000002708	COVER,INK CARTRIDGE FLEX VP-540	1
	1000004786	COVER,INK CARTRIDGE FLEX RS-640	1
22	1000002647	COVER,INNER VP-540	1
23	1000003037	COVER,JUNCTION BOARD VP-540	1
24	1000002710	COVER,RAIL SIDE VP-540	1
25	1000004149	FILTER(E),FRC-40-12-1.7-013	1
26	1000003086	FILTER(E),RAIL SHIELD VP-540	3
27	1000003084	FILTER(E),SFT-36SN	1
28	1000002593	FLANGE,GRIT-ENCORDER VP-540	1
29	1000003823	FLANGE,MOTOR SCAN VP-540	1
30	1000002552	FRAME,FEED MOTOR VP-540	1
31	1000002549	FRAME,SUPPORT AUTO CUTTER VP-540	1
	1000006244	FRAME,SUPPORT AUTO CUTTER 2 VP-540	1
32	1000005176	FRAME,SUPPORT RAIL RS-540	1
	1000004787	FRAME,SUPPORT RAIL RS-640	1
33	1000001905	GEAR,H187S20(B8)	1
34	21685128	GEAR H300 S10(B6C16POM)	1
35	1000003293	GUIDE,TUBE TYPE3 VP-540	23
36	1000002603	HOLDER,BACKUP SHAFTSQUARE VP-540	1
37	1000005174	HOLDER,CABLE RS-540	1
	1000004782	HOLDER,CABLE RS-640	1
38	1000001555	HOLDER,IDLE PULLEY XC-540	1
39	21655131	HOLDER,LINEAR SCALE CJ-70	1
41	22115121	HOUSING,R-BEARING FRAME FJ-540	1
42	1000004745	L-BEARING,SSR15XW2GE+2050L (for RS-540)	1
	21895153	L-BEARING SSR15XW2UE+2320LY ( for RS-640)	1
43	1000002535	LOCK,STAY VP-540	1
44	1000003151	PAD,GUIDE TUBE VP-540	2
45	1000002612	PLATE,HOLDER CABLE VP-540	1
	1000004783	PLATE,HOLDER CABLE RS-640	1
46	1000003374	PLATE,INK CARTRIDGE FLEX VP-540	1
47	22055316	PLATE,LINEAR SCALE CJ-70	1
48	1000002615	PLATE,RAIL REAR VP-540	1
	1000004781	PLATE,RAIL REAR RS-640	1
49	1000005171	RAIL,GUIDE RS-540	1
	1000004779	RAIL,GUIDE RS-640	1
50	1000002543	RAIL,LINEAR SCALE VP-540	1
	1000004780	RAIL,LINEAR SCALE RS-640	1

## PARTS LIST -Main Parts-

	Parts No.	Parts Name	qt.
51	22175870	BEARING 10-19ZZ	1
52	15229506	SENSOR INTERRUPTER,GP1A05A5	1
53	1000001480	SHAFT,DRIVE PULLEY XC-540	1
54	1000001479	SHAFT,IDLE PULLEY XC-540	1
55	22295117	SHAFT,LOCK CJ-70	1
56	1000003089	SHEET,FRAME SUPPORT RAIL VP-540	3
57	1000005175	SHEET,HOLDER CABLE RS-540	2
	1000004785	SHEET,HOLDER CABLE RS-640	2
58	1000002544	SHEET,LINEAR SCALE VP-540 (for RS-540)	1
	1000003665	SHEET,LINEAR SCALE XJ-540 (for RS-640)	1
59	1000002709	SHEET,RAIL UNDER VP-540	8
60	1000002162	SHEET,ROTARY DISK SLIT 360LPI	1
61	22185101	SLIDER,LOCK CJ-70	1
62	1000003821	SPACER,FLANGE VP-540	1
63	22175134	SPRING,A CJ-70	2
64	22175122	SPRING,BACK UP PNC-960	1
65	22175157	SPRING,C P-ROLLER CM-500	2
66	1000002596	STAY,G-ENCODER SENSOR VP-540	1
67	22715469	STAY,HOLD SHAFT SQUARE SP-540V	1
68	1000002597	STAY,RAILGUIDE L VP-540	1
69	1000002534	STAY,SHAFT DRIVE PULLEY VP-540	1
70	1000002554	STAY,SUPPORT RAIL L VP-540	1
71	1000002594	STOPPER,GRIT-ENCORDER VP-540	1
72	22135441	STOPPER,LINEAR SCALE FJ-540	1
73	1000004142	SUPPORT,GUIDE CABLE TYPE2 VP-540	
	1000004788	SUPPORT,GUIDE CABLE RS-640	1
74	1000003823	FLANGE,MOTOR SCAN VP-540	1
75	1000004747	STAY,SUPPORT GUIDE CABLE RS-540	1
76	1000005271	HOLDER,CABLE F RS-540	1
	1000005272	HOLDER,CABLE F RS-640	1

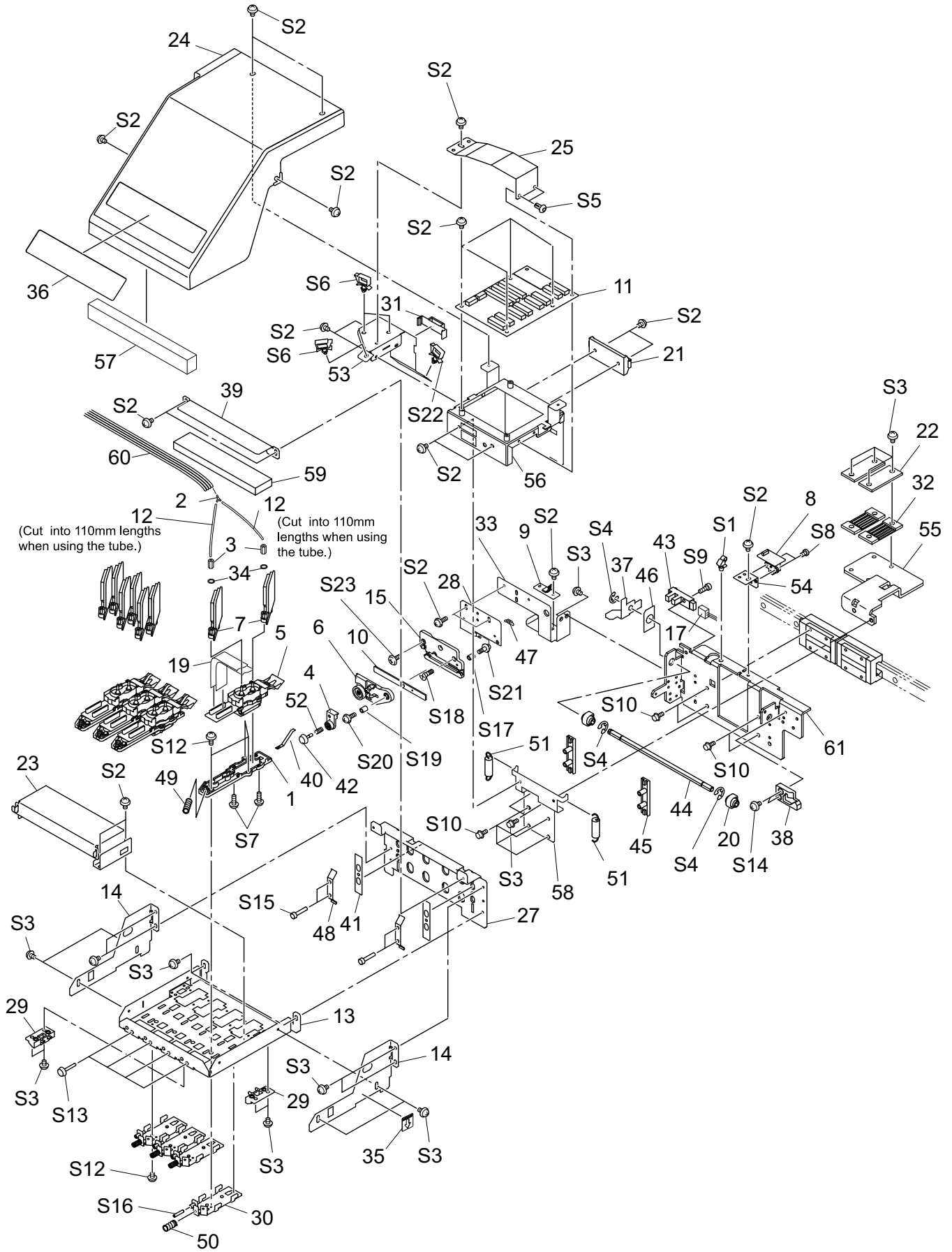
## PARTS LIST -Supplemental Parts-

	Parts No.	Parts Name	qt.
S1	31029101	BUSH,NB-19	1
S2	31029106	BUSH,SQUARE SB-6025	3
S3	31329501AS	CLAMP SET,PUSH MOUNT RT30SSF5 20P	2
S4	3000000033	CLAMP,WIRE PLESS RFC-45VO	6
S5	31289111AS	CUPSCREW SET, M4*6 NI 100 PCS.	16
S7	31289109AS	CUPSCREW SET,M3*4 NI 100 PCS.	9
S8	31289102AS	CUPSCREW SET,M3*6 NI 50 PCS.	10
S10	31129102	PIPE SET,POLYCA 4*8*10 20PCS	2
S11	31149704AS	RING SET,E-RING ETW-6 SUS 100 PCS	3
S12	31299102AS	RIVET SET,NYLON P2655B 20 PCS.	27
S13	31049170AS	SCREW SET,CAP M3*8 NI 50 PCS.	4
S14	31409801AS	SADDLE,LOCKING WIRE LWS-0711Z 20P	3
S15	31019149	SCREW SET,BINDING M2.3*8 3CBC 100PCS	2
S16	31049155AS	SCREW SET,CAP M3*12 BC+PW 20 PCS.	18
S17	31049171AS	SCREW SET,CAP M3*12 NI 50 PCS.	4
S18	31289108AS	CUPSCREW SET, M3*8 NI 100 PCS.	4
S19	31049173AS	SCREW SET,CAP M4*10 NI 50 PCS.	1
S20	31049174AS	SCREW SET,CAP M4*15 NI 20 PCS.	2
S21	31049137AS	SCREW SET,CAP M4*25 3CBC 20 PCS	1
S22	31049169AS	SCREW SET,CAP M4*8 3CBC+PW 20PCS	18
S23	31199701AS	SCREW SET,SET WP M3*3 NI 20 PCS	4
S24	31229103AS	SCREW SET,TRUSS M2*6 NI 100 PCS	2
S25	31239103AS	SCREW SET,W-SEMS M3*8 NI+PW 50 PCS	9
S26	31049117	SCREW SET,CAP M4*12 NI+PW 4*9*0.8 20PCS	2
S27	31069104	SCREW,CAP M4*6+FL NI	7

qt. for RS-640 \*1 = 26, \*2 = 4, \*3 = 7, \*4 = 29, \*5 = 20

\* qt. indicates the number of parts that is described in the figure.

# 1-4 HEAD CARRIAGE





# 1-4 HEAD CARRIAGE

## PARTS LIST -Main Parts-

	Parts No.	Parts Name	qt.
1	21905166	ADAPTER,HEAD FJ-540	4
2	1000002679	ADAPTER,JUNCTION VPY306	4
3	11909167	ADAPTER,SCREW 3FAI FJ-540	8
4	22805292	ASSY,CLAMP BLADE CM-500	1
5	1000002201	ASSY,HEAD INKJET SOL XC-540	4
6	22805291	ASSY,HOLDER BLADE CM-500	1
7	6085393800	ASSY,INK DAMPER L 3FAI 4 SJ-1000	8
8	W700981120	ASSY,LINEAR ENCODER BOARD RS-540	1
	6700989040	ASSY,LINEAR ENC BOARD SERVICE (Revised 9)	1
9	W7009812A0	ASSY,PAPERSIDE SENS BOARD RS-540	1
10	22805396	ASSY,PLATE CAM SLIDE FJ-500	1
11	W700981110	ASSY,PRINT CARRIAGE BOARD RS-540	1
12	1000003136	ASSY,TUBING 3*150MM VP-540	8
	(31259801)	(TUBE,INK N 3FAI NO.1083732 (100m)) (Revised 7)	
13	1000002519	BASE,CARRIAGE AL VP-540	1
14	1000003032	BASE,CARRIAGE SIDE AL VP-540	2
15	22355656	BASE,CUTTER CM-500	1
17	1000002171	CABLE-ASSY,HEAD U/D SENSOR VP-540	1
19	23475206	CABLE-CARD 21P1 330L BB	8
20	21775103	CAM,CARRIAGE FJ-540	2
21	11769118	CLAMP,FCM2-S6-14	1
22	22025646	COVER,BELT HOLDER EGX-600	2
23	1000002588	COVER,HEAD BOARD VP-540	1
24	1000002632	COVER,PRINT CARRIAGE VP-540	1
25	1000002652	COVER,PRINT JUNCTION VP-540	1
27	1000002523	FRAME,CARRIAGE U/D VP-540	1
28	22115798	FRAME,CUTTER FJ-500	1
29	1000003076	GUIDE,CARRIAGE CAP VP-540	2
30	22135440	GUIDE,HEAD AL FJ-540	4
31	1000003293	GUIDE,TUBE TYPE3 VP-540	1
32	21655232	HOLDER,BELT EGX-600	2
33	1000004750	HOLDER,CUTTER RS-540	1
34	11659249	HOLDER,RING O 3FAI FJ-540	8
35	1000005169	LABEL,ARROW RS-540#LA1087	1
36	1000002753	LABEL,READ MANUAL VP-540#LA969	1
37	1000002587	LEVER,CARRIAGE VP-540	1
38	21345105	LOCK,CJ-500	1
39	1000002586	PLATE,DAMPER VP-540	1
40	22055547	PLATE,GND FJ-540	4
41	22055548	PLATE,SLIDER CARRIAGE FJ-540	2
42	21495115	SCREW,BLADE SET CM-500	1
43	15229506	SENSOR INTERRUPTER,GP1A05A5	1
44	1000002521	SHAFT,HEXAGON CARRIAGE VP-540	1
45	22185127	SLIDER,CARRIAGE FJ-540	2

## PARTS LIST -Main Parts-

	Parts No.	Parts Name	qt.
46	1000002623	SPACER,U/D LEVER VP-540	1
47	22175154	SPRING,BLADE UP CM-500	1
48	22175159	SPRING,CARRIAGE SIDE FJ-50	2
49	22175520	SPRING,HEAD ADJUST 500 FJ-540	4
50	22175519	SPRING,HEAD PRESS 500 FJ-540	4
51	22625109	SPRING,PULL CARRIAGE 3500 FJ-540	2
52	22175155	SPRING,SCREW CM-500	1
53	1000003863	STAY,CARRIAGE TUBE TYPE2 VP-540	1
54	1000000417	STAY,ENCORDER SENSOR SP-540V	1
55	1000004749	STAY,HOLDER BELT RS-540	1
56	1000005168	STAY,HOLDER CARRIAGE BOARD RS-540	1
57	1000003031	SUPPORT,ADJUST SCREW VP-540	1
58	1000005170	SUPPORT,CARRIAGE BOARD RS-540	1
59	1000002643	SUPPORT,DAMPER VP-540	1
60	1000002681	TUBE,SJ-RDG3*4 4LINK VP-540	1
	1000004784	TUBE,SJ-RDG3*4 LINK4 RS-640	1
61	1000005669	BASE,HOLDER CARRIAGE RS-540	1

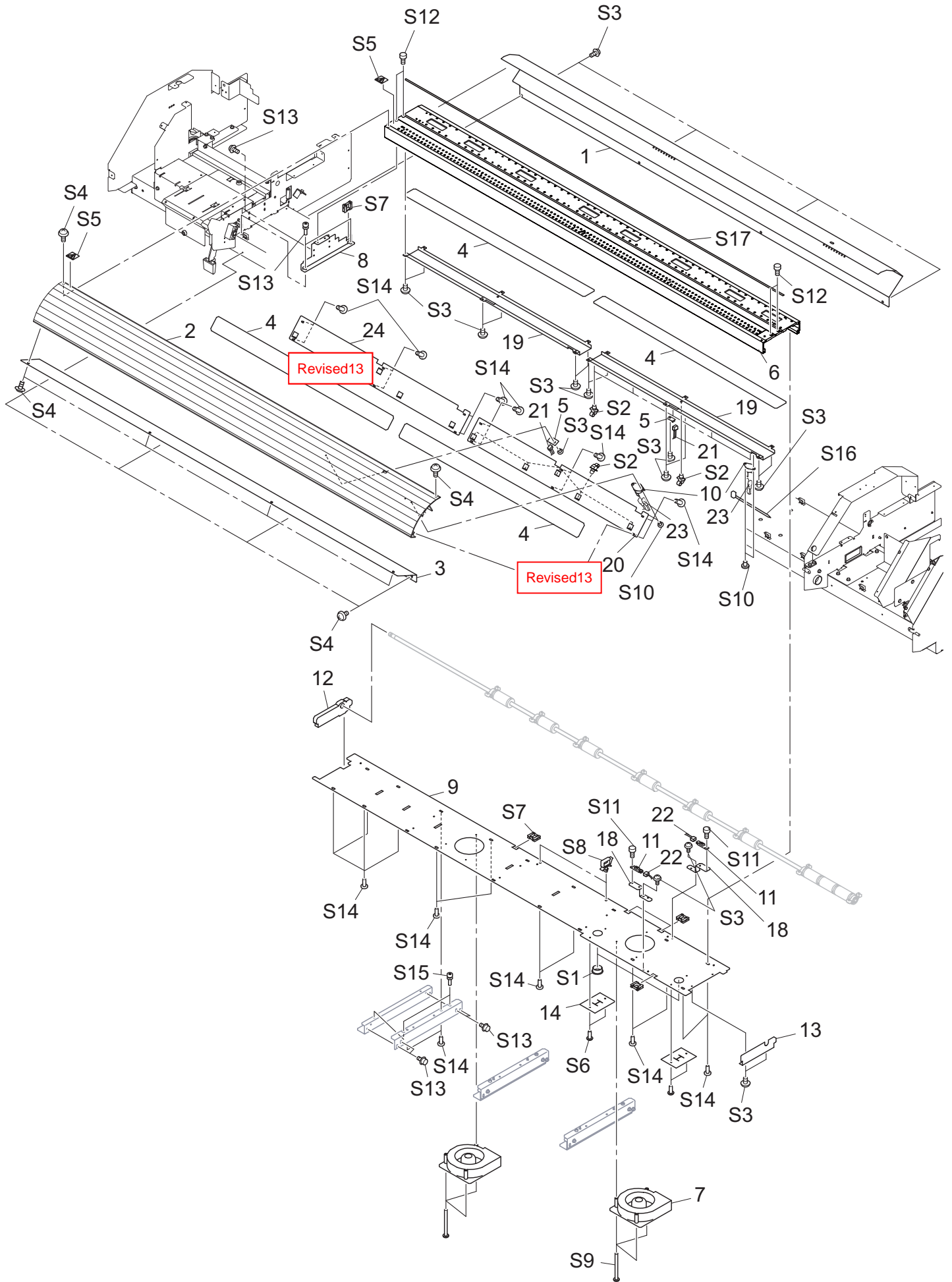
## PARTS LIST -Supplemental Parts-

	Parts No.	Parts Name	qt.
S1	31329601AS	CLAMP SET,INSULOK T-18S 100 PCS.	1
S2	31289109AS	CUPSCREW SET,M3*4 NI 100 PCS.	23
S3	31289102AS	CUPSCREW SET,M3*6 NI 50 PCS.	20
S4	31149703AS	RING SET,E-RING ETW-4 100 PCS.	3
S5	31299102AS	RIVET SET,NYLON P2655B 20 PCS.	2
S6	31409801AS	SADDLE,LOCKING WIRE LWS-0711Z 20P	3
S7	31679902AS	SCREW SET C-SEMS M2*8 NI 100 PCS	8
S8	31019148AS	SCREW SET,BINDING M2.6*4 NI 100 PCS	2
S9	31049173AS	SCREW SET,CAP M4*10 NI 50 PCS.	1
S10	31049169AS	SCREW SET,CAP M4*8 3CBC+PW 20PCS	8
S12	31089121AS	SCREW SET,PAN M2.3*8 NI+PW 100PCS	13
S13	31179908AS	SCREW SET,UREA M3*20 N-1 WH 50PCS	4
S14	31239125AS	SCREW SET,W-SEMS M3*8 SUS 50 PCS.	2
S15	31799103	SCREW SET,CAP M3*15 NI 20PCS	4
S16	31199905AS	SCRW SET,SET CONE M3*16 NI 20 PCS	4
S17	31029801AS	BUSH SET,ROLL 2*4 3C100PCS	1
S18	31169103AS	SCREW SET,FLAT M3*6 3CBC 100 PCS	1
S19	31029803AS	BUSH SET,ROLL 3*5 3C 20PCS.	1
S20	31019118AS	SCREW SET,BINDING M3*10 3CBC 100PCS	1
S21	31229103AS	SCREW SET,TRUSS M2*6 NI 100 PCS	1
S22	31409811AS	SADDLE SET,LOCKING WIRE LWS-1211Z 20P	1
S23	31019116AS	SCREW SET,BINDING M3*6 3CBC 100 PCS	1

\* qt. indicates the number of parts that is described in the figure.

Revised 9: Refer to the Service Information RS640-007.

# 1-5 BASE FRAME



# 1-5 BASE FRAME

## PARTS LIST -Main Parts-

	Parts No.	Parts Name	qt.
1	1000004795	APRON,B RS-540	1
	1000004772	APRON,B RS-640	1
2	1000002148	APRON,F AL VP-540 (For RS-540)	1
	1000006379	APRON,F AL RS-640	1
3	1000005086	APRON,F UNDER RS-540 <span style="border: 1px solid red; padding: 2px;">Revised 3</span>	1
	1000004771	APRON,F UNDER RS-640	1
4	1000002165	ASSY,CORD HEATER VP-540	4
	1000004792	ASSY,CORD HEATER RS-640	4
5	W700461270	ASSY,THERMISTOR BOARD VP-540	2
	6700469060	ASSY,THERMISTOR BOARD SERVICE <span style="border: 1px solid red; padding: 2px;">Revised 5</span>	2
6	1000004733	BED,RS-540	1
	1000004769	BED,RS-640	1
7	1000000764	FAN,A35577-55ROL	2
8	1000002584	FRAME,SIDE BED L VP-540	1
9	1000002541	PLATE,SHUTTER VP-540	1
	1000004770	PLATE,SHUTTER RS-640	1
10	<del>15099124</del>	<del>SENSOR,US-602SXTLAS 65OFF 500N</del> <span style="border: 1px solid red; padding: 2px;">18</span>	2
	1000013820	SENSOR,03 EN 9572 A65	2
11	15099115	SENSOR-INTERRUPTER GP2A25NJ	2
12	1000002600	SHUTTER,BED L VP-540	1
13	1000002599	SHUTTER,BED R VP-540	1
14	21625103	SHUTTER,HEATER CORD SP-300	2
15			
16			
18	1000002585	STAY,PAPER SENSOR VP-540	2
19	1000002590	STAY,PRINT HEATER VP-540	2
	1000004773	STAY,PRINT HEATER RS-640	2
20	<del>1000002606</del>	<del>STAY,DRY HEATER VP-540</del> <span style="border: 1px solid red; padding: 2px;">Revised 13</span>	2
	1000009776	STAY,DRY HEATER VP-540_01	1
	<del>1000005695</del>	<del>STAY,DRY HEATER RS-640</del> <span style="border: 1px solid red; padding: 2px;">Revised 13</span>	2
	1000009778	STAY,DRY HEATER RS-640_01	1
21	1000002181	CABLE-ASSY,THERMISTOR VP-540	2
22	1000002175	CABLE-ASSY,PAPER SENSOR VP-540	2
23	1000002184	CABLE-ASSY,THERMOSTAT VP-540	2
24	1000009776	STAY,DRY HEATER VP-540_01	1
	1000009780	STAY,DRY HEATER 2 RS-640_01 <span style="border: 1px solid red; padding: 2px;">Revised 13</span>	1

## PARTS LIST -Supplemental Parts-

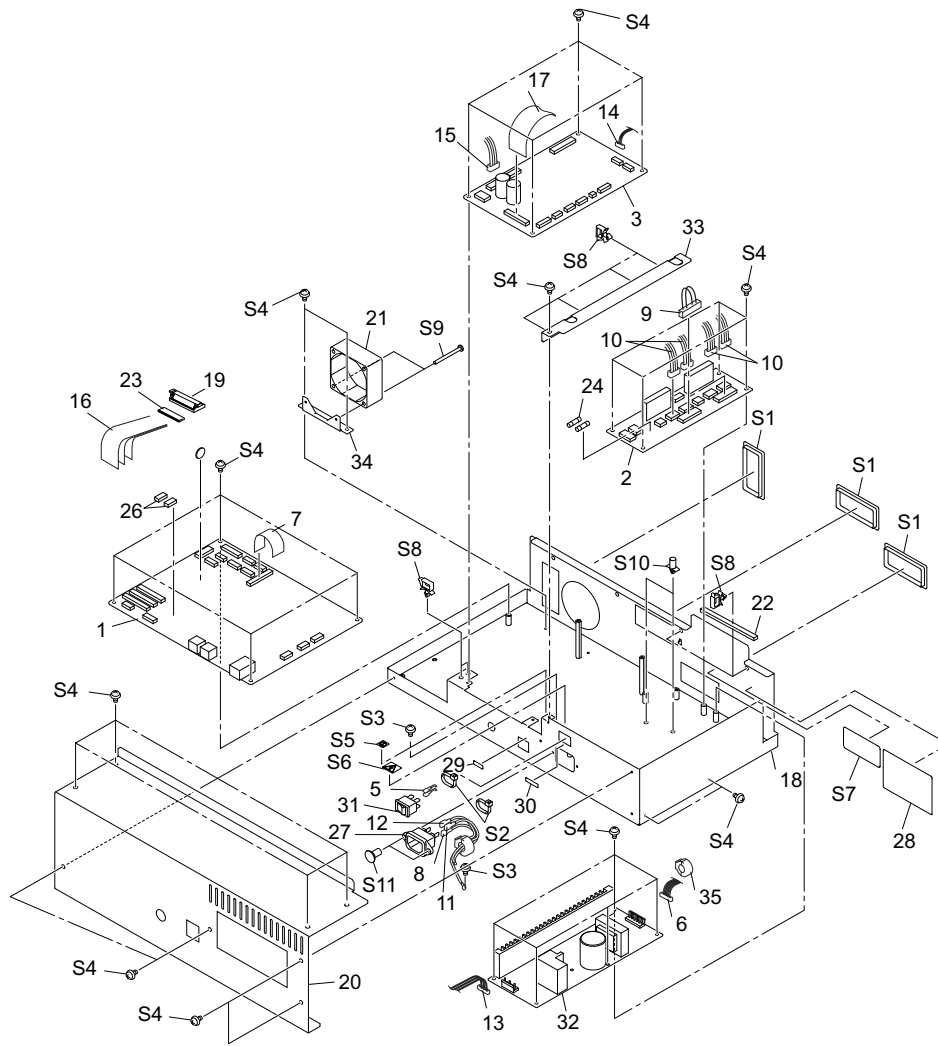
	Parts No.	Parts Name	qt.
S1	31029101	BUSH,NB-19	2
S2	31329501AS	CLAMP SET,PUSH MOUNT RT30SSF5 20P	12
S3	31289109AS	CUPSCREW SET,M3*4 NI 100 PCS.	24
S4	31289102AS	CUPSCREW SET,M3*6 NI 50 PCS.	10
S5	31279106	LABEL,CAUTION HOT SURF NO.778	2
S6	31299102AS	RIVET SET,NYLON P2655B 20 PCS.	4
S7	31409702	SADDLE SET,LOCKING WIRE LES-1010 20P	5
S8	31409801AS	SADDLE,LOCKING WIRE LWS-0711Z 20P	2
S9	31019124	SCREW SET,BINDING M3*35 NI 50 PCS	6
S10	31019115AS	SCREW SET,BINDING M3*4 3CBC 100 PCS	4
S11	31049170AS	SCREW SET,CAP M3*8 NI 50 PCS.	2
S12	31049173AS	SCREW SET,CAP M4*10 NI 50 PCS.	4
S13	31049169AS	SCREW SET,CAP M4*8 3CBC+PW 20PCS	18
S14	31019703	SCREW,BINDING P-TIGHT M3*8 3C 100P	18
S15	31179106	SCREW,JACK UP SP-540V	6
S16	31329601AS	CLAMP SET,INSULOK T-18S 100 PCS.	1
S17	3000000112	TAPE,FNS TUYA 50 4X10M LINTEC	1
		(Cut when using.) <span style="border: 1px solid red; padding: 2px;">Revised 10</span> RS-540 : L= 1450mm, RS-640 : L= 1705mm	

\* qt. indicates the number of parts that is described in the figure.

\*Revised 5: Refer to the Service Information RS640-006.

\*Revised 13: Refer to the Service Information RS640-011.

# 1-6 CHASSIS



## PARTS LIST -Main Parts-

	Parts No.	Parts Name	qt.
1	6700989010	ASSY,MAIN BOARD RS-540	1
2	W700981220	ASSY,POWER BOARD RS-540	1
3	1000004994	ASSY,SERVO BOARD RS-540	1
	<del>15009101</del>	<del>BATTERY CR2032</del>	<del>1</del>
5	23415116	CABLE ASSY,JUNBI D SP-300	1
6	23415117	CABLE ASSY,POWER MAIN SP-300	1
7	23475197	CABLE CARD 25P1 105L BB FJ-540	1
8	23415268	CABLE-ASSY AC GROUND GREEN SP-540	1
9	1000002044	CABLE-ASSY,117V SELECTOR XC-540 (for 117V)	2
	1000002043	CABLE-ASSY,230V SELECTOR XC-540 (for 230V)	2
10	1000002183	CABLE-ASSY,HEATER VP-540	2
	1000004791	CABLE-ASSY,HEATER RS-640	2
11	1000002189	CABLE-ASSY,JUNBI A VP-540	1
12	1000002190	CABLE-ASSY,JUNBI B VP-540	1
13	1000002173	CABLE-ASSY,JUNBI E VP-540	1
14	1000004961	CABLE-ASSY,POWER SERVO RS-540	1
15	1000002180	CABLE-ASSY,RELAY JUNCTION VP-540	1
16	23475240	CABLE CARD,36P1 2670L BB HIGH-V (for RS-540)	3
	1000004962	CABLE-CARD,36P1 2930L BB HIGH-V (for RS-640)	3
17	23475237	CABLE-CARD 40P1 2070L BB HIGH-V (for RS-540)	1
	1000004963	CABLE-CARD,40P1 2330L BB HIGH-V (for RS-640)	1
18	1000004995	CHASSIS,RS-540	1
19	11769118	CLAMP,FCM2-S6-14	1
20	1000005165	COVER,CHASSIS RS-540	1
21	1000000012	FAN,109R0624H459	1
22	1000003085	FILTER(E),CHASSIS SHIELD VP-540	1

	Parts No.	Parts Name	qt.
23	1000004149	FILTER(E),FRC-40-12-1.7-013	1
24	12559105	FUSE,5X20 021706.3MXP 6.3A/250V	2
26	1000003015	FUSE,1543.15DR	2
27	13429702	INLET AC P01CF01 15A250V	1
28	22535257	LABEL,CAUTION VOLTAGE #LA167	1
29	1000002682	LABEL,LAN VP-540#LA964	1
30	22535117	LABEL,POWER CM-500 NO.893	1
31	13129170	POWER SW AJ7201B	1
32	1000004955	POWER UNIT,LEB150F-0536-XRLD	1
	1000006130	POWER UNIT,LEB150F-0536-XRLD A	1
33	1000004996	STAY,CABLE RS-540	1
34	1000002566	STAY,CHASSIS FAN VP-540	1
35	12399353	FILTER(E) TFT-081813N F-540	1

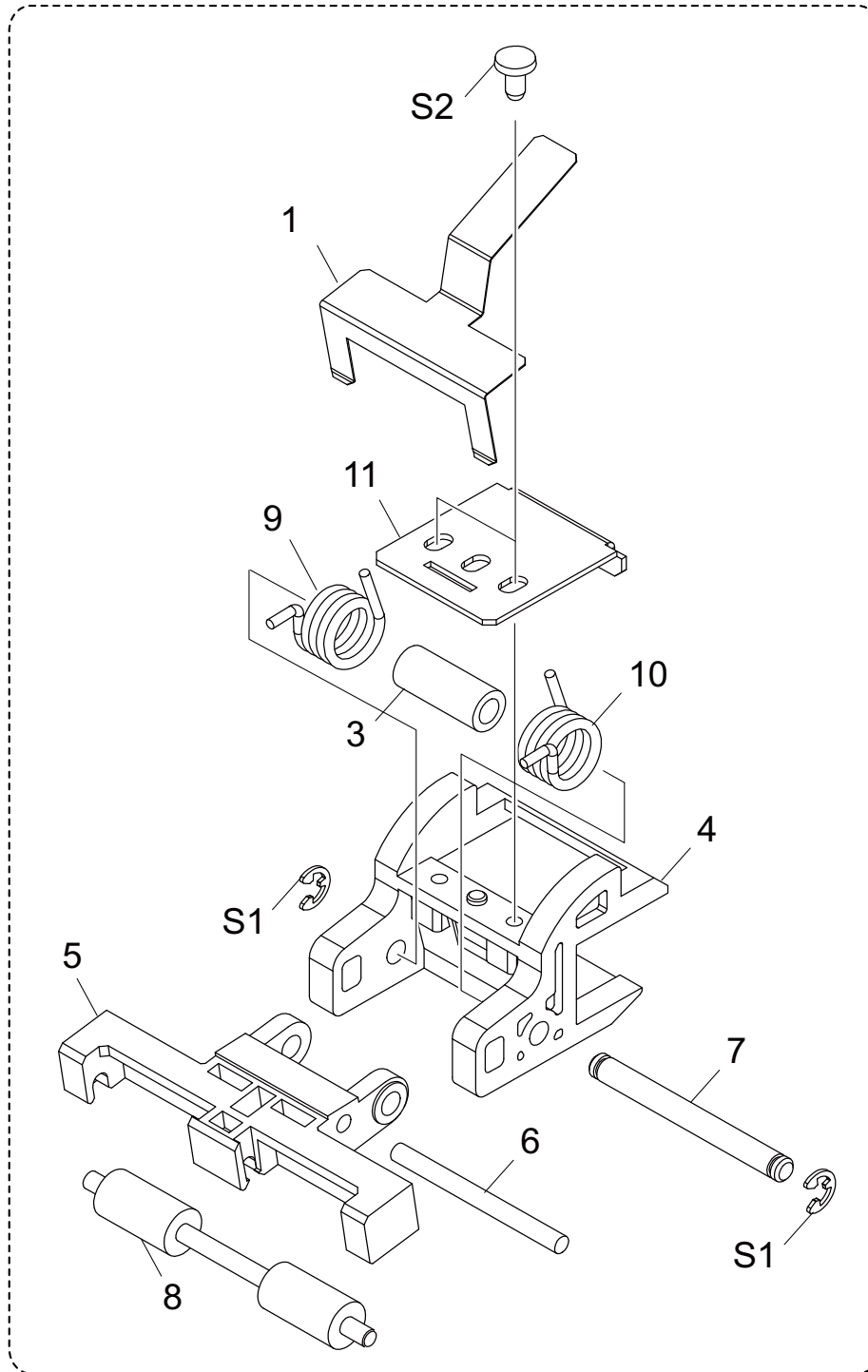
Revised 3 : Refer to the Service Information RS640-004.

## PARTS LIST -Supplemental Parts-

	Parts No.	Parts Name	qt.
S1	31029106	BUSH,SQUARE SB-6025	3
S2	31329601AS	CLAMP SET,INSULOK T-18S 100 PCS.	2
S3	31289111AS	CUPSCREW SET, M4*6 NI 100 PCS.	1
S4	31289109AS	CUPSCREW SET,M3*4 NI 100 PCS.	30
S5	31279116	LABEL,EARTH MARK-1 NO.E-580	1
S6	31279121	LABEL,FLASH-LIGHTING NO.E-582	1
S7	31279191	LABEL,WARNING FUSE REPLACE #347	1
S8	31409801AS	SADDLE,LOCKING WIRE LWS-0711Z 20P	8
S9	31019124	SCREW SET,BINDING M3*35 NI 50 PCS	2
S10	31369102	SPACER,PCB SUPPORT PCB-8S	2
S11	31289105AS	CUPSCREW SET, M3*6 3CBC 100 PCS	2

\* qt. indicates the number of parts that is described in the figure.

# 1-7 PINCH ROLLER



## PARTS LIST -Main Parts-

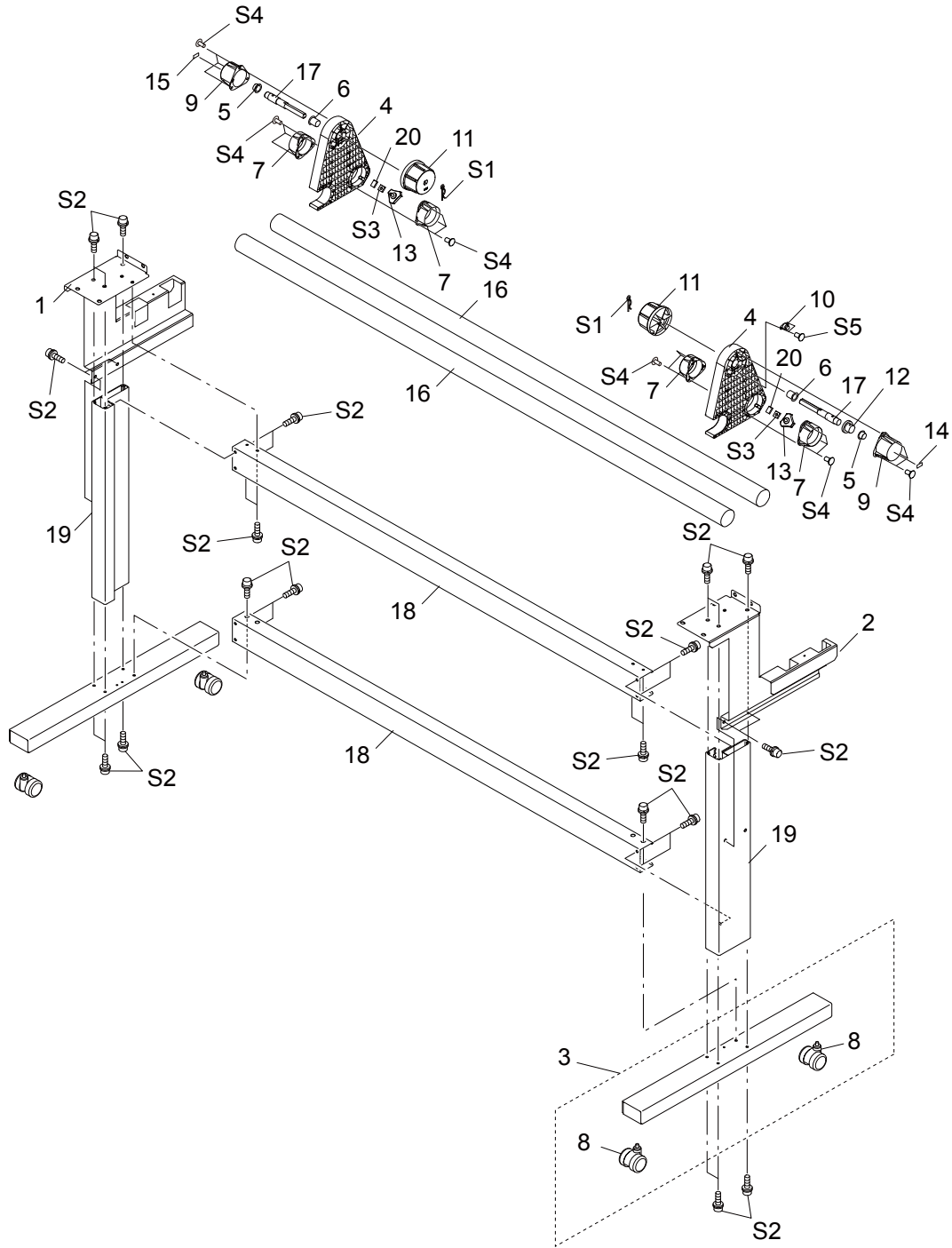
	Parts No.	Parts Name	RS-540	qt.	RS-640	qt.
1	1000005172	ADAPTER,GND PINCH RS-540	8	10		
2	6700980190	ASSY,PINCHROLL RS-540	8	10		
3	21745101	COLLAR,P-ROLLER PNC-960	8	10		
4	22195153	FRAME,PINCH ROLL SP-540V	8	10		
5	1000004732	LEVER,PINCH WIDE RS-540	8	10		
6	11539104	PIN 3*35 SUS M6	8	10		
7	22145832	PIN NO.2 214-832	8	10		
8	1000003616	P-ROLLER,FD8S3(B15B15L60)	8	10		
9	1000002648	SPRING,PINCH LEFT VP-540	8	10		
10	1000002649	SPRING,PINCH RIGHT VP-540	8	10		
11	1000005173	STAY,PINCH GND RS-540	8	10		

## PARTS LIST -Supplemental Parts-

	Parts No.	Parts Name	RS-540	qt.	RS-640	qt.
S1	31149702AS	RING SET,E-RING ETW-3 100 PCS.	16	20		
S2	31019702AS	SCREW SET,BIND P-TIGHT M3*6 3C 100P	16	20		

\* qt. indicates the number of parts that is described in the figure.

# 1-8 STAND



## PARTS LIST -Main Parts-

	Parts No.	Parts Name	qt.
1	1000004724	ARM,L RS-540	1
2	1000004723	ARM,R RS-540	1
3	1000002636	ASSY,BASE STAND VP-540	2
4	1000004718	BASE,FEEDER RS-540	2
5	1000001068	BUSH,80F-1610	2
6	1000001352	BUSH,80F-1620	2
7	1000004720	BUSH,FEEDER R RS-540	4
8	12329505	CASTER,BWS-50BN	4
9	1000004719	COVER,FEEDER RS-540	2
10	1000004734	DAMPER,FRT-C2-301G1	1
11	1000001584	FLANGE,GUIDE 3 XC-540	2
12	1000004722	GEAR,S32(B5M0.8) RS-540	1
13	1000003545	KNOB,BOLT 117-10313	2
14	1000001090	LABEL,CLAMP L AJ-1000#LA913	1
15	1000001089	LABEL,CLAMP R AJ-1000#LA912	1

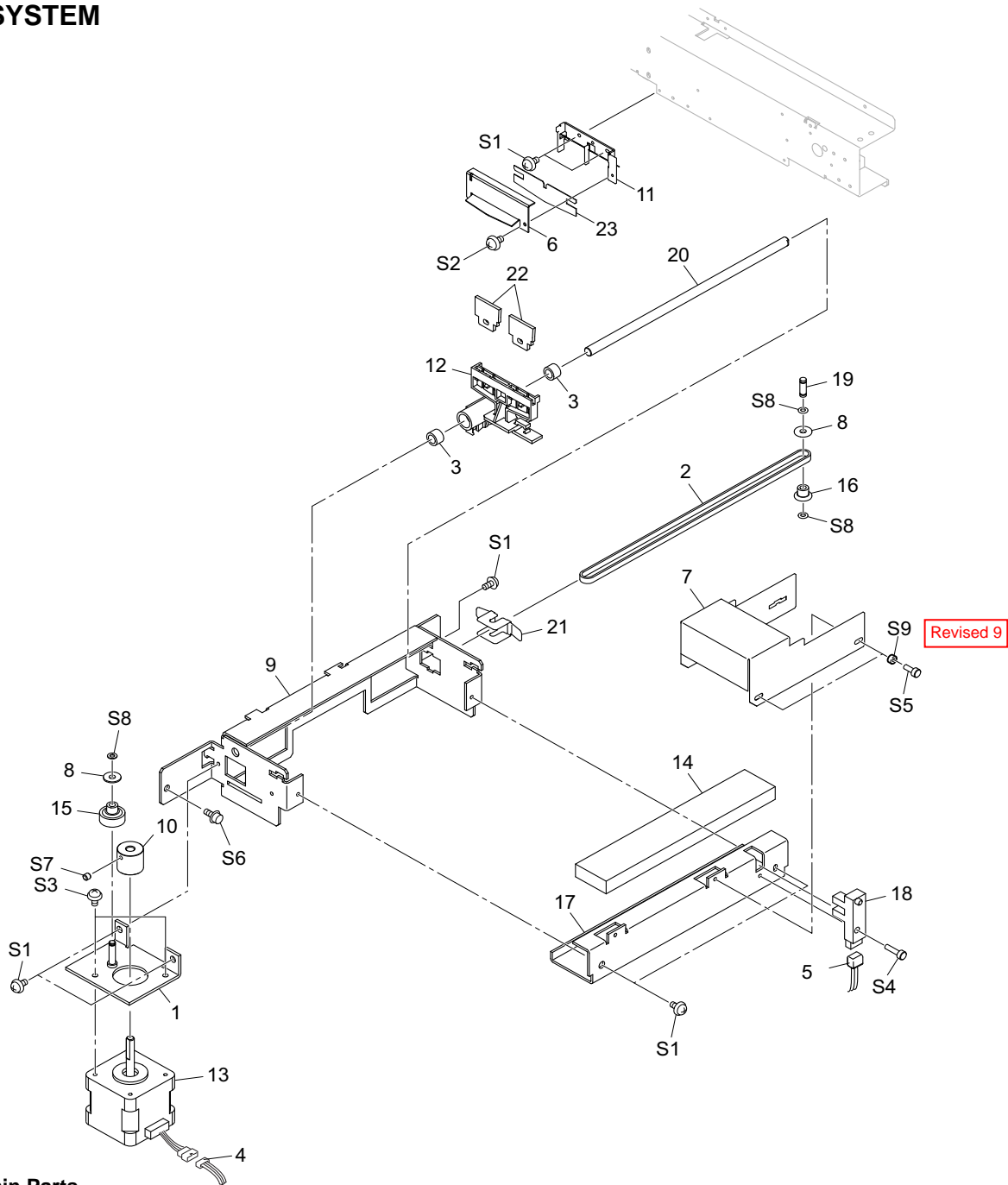
	Parts No.	Parts Name	qt.
16	1000004725	PIPE,FEEDER SHAFT RS-540	2
	1000004764	PIPE,FEEDER SHAFT RS-640	2
17	1000004721	SHAFT,FEEDER RS-540	2
18	1000002635	STAY,STAND VP-540	2
	1000005696	STAY,STAND RS-640	2
19	1000005694	STAND,LEG RS-540	2
20	1000005480	SPACER,BASE FEEDER RS-540	2

## PARTS LIST -Supplemental Parts-

	Parts No.	Parts Name	qt.
S1	31119701	PIN,SNAP M14 SUS	2
S2	31049157	SCREW,CAP M6*20 3CBC+PW+SW	30
S3	3000000110	NUT SET,SQUARE M6*11*3 3C 50PCS	2
S4	3000000124	SCREW SET,BIND P-TIGHT4*12 3CBC 50PCS	18
S5	31019703	SCREW,BINDING P-TIGHT M3*8 3C 100P	2
S6	31049169AS	SCREW SET,CAP M4*8 3CBC+PW 20PCS	1

\* qt. indicates the number of parts that is described in the figure.

# 1-9 WIPER SYSTEM



## PARTS LIST -Main Parts-

	Parts No.	Parts Name	qt.
1	1000002576	BASE,WIPER MOTOR VP-540	1
2	11929138	BELT,408P2M4-530	1
3	12159536	BUSH,B-S6-17	2
4	1000002182	CABLE-ASSY,WIPER MOTOR VP-540	1
5	1000002186	CABLE-ASSY,WIPER SENSOR VP-540	1
6	1000002573	COVER,SCRAPER VP-540	1
7	1000002572	COVER,WIPE VP-540	1
8	21995104	FLANGE,PULLEY STX-7	2
9	1000002574	FRAME,WIPER VP-540	1
10	21685144	GEAR,S53S5(B15) FJ-540	1
11	1000002571	HOLDER,SCRAPER VP-540	1
12	21655245	HOLDER,WIPER FJ-540	1
13	22435106	MOTOR,103-593-1041	1
14	21545160	PAD,WIPER TRAY SJ-540	1
15	21975124	PULLEY,T14P2S4 + GEAR,S53	1
16	21975123	PULLEY,WD6.94S9	1
17	1000002575	RAIL,GUIDE WIPER VP-540	1

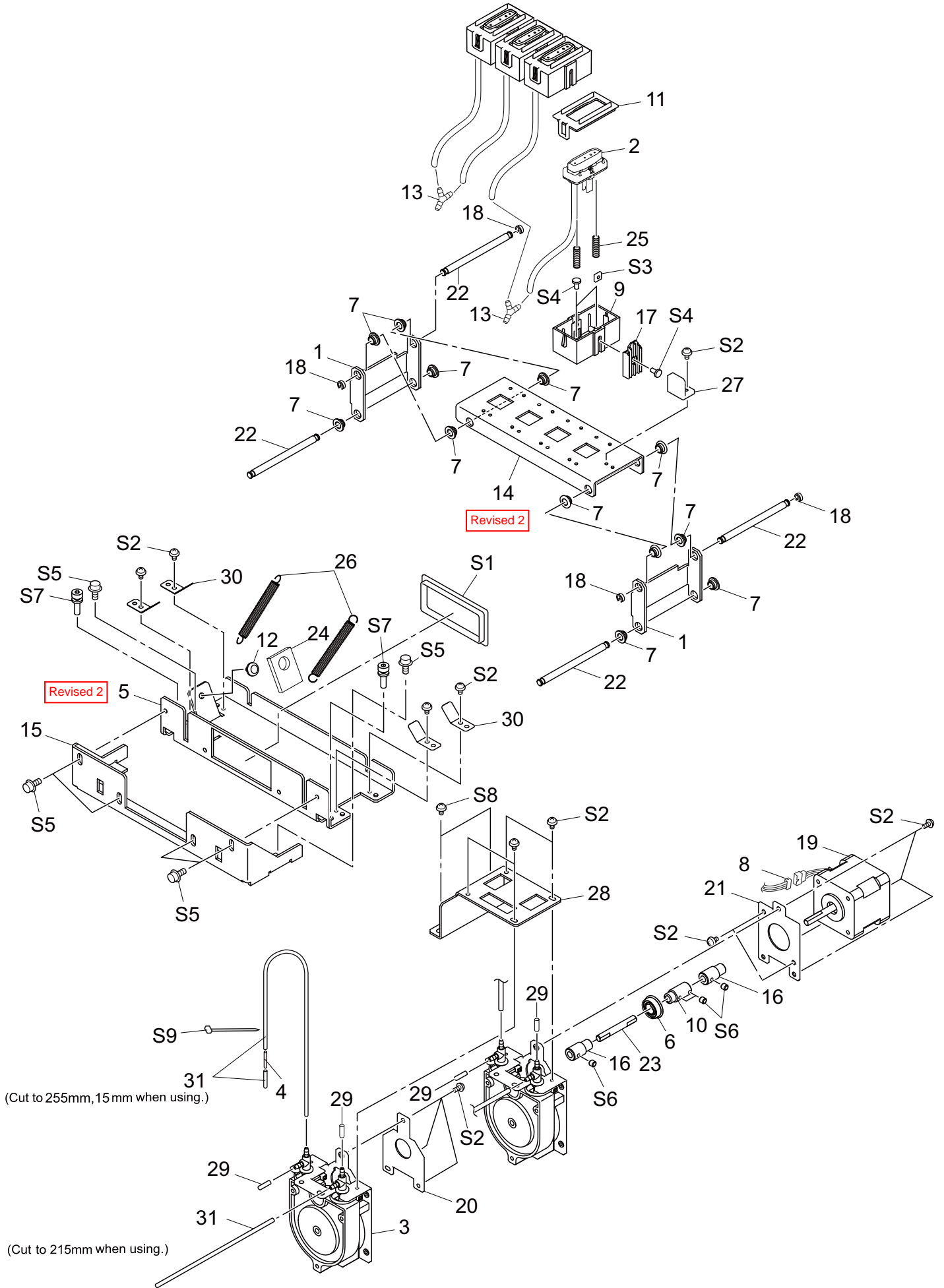
	Parts No.	Parts Name	qt.
18	15229506	SENSOR INTERRUPTER,GP1A05A5	1
19	1000004034	SHAFT,WIPE PULLEY XC-540	1
20	22155961	SHAFT,WIPER FJ-540	1
21	22175140	SPRING,TENSIONER STX-7	1
22	1000003390	WIPER,HEAD FOR SOLINK	2
23	1000001658	WIPER,SCRAPER XC-540	1

## PARTS LIST -Supplemental Parts-

	Parts No.	Parts Name	qt.
S1	31289109AS	CUPSCREW SET,M3*4 NI 100 PCS.	6
S2	31289112AS	CUPSCREW SET,M3*10 NI 100 PCS.	1
S3	31289102AS	CUPSCREW SET,M3*6 NI 50 PCS.	2
S4	31049171AS	SCREW SET,CAP M3*12 NI 50 PCS.	1
S5	31049170AS	SCREW SET,CAP M3*8 NI 50 PCS.	2
S6	31049169AS	SCREW SET,CAP M4*8 3CBC+PW 20PCS	1
S7	31199701AS	SCREW SET,SET WP M3*3 NI 20 PCS	1
S8	31249952	WASHER SET,POLYSLIDER 2.6*5*.5 CUT 20PCS	3
S9	31029820	BUSH SET,ROLL 3*2 3C 50PCS	2

\* qt. indicates the number of parts that is described in the figure.

# 1-10 PUMP SYSTEM





# 1-10 PUMP SYSTEM

## PARTS LIST -Main Parts-

	Parts No.	Parts Name	qt.
1	1000002537	ARM,LINK UP VP-540	2
2	1000002794	ASSY,CAP-TOP XC-540	4
	1000004546	ASSY,CAP-TOP 2 XC-540	Revised 2 4
3	6700319010	ASSY,PUMP SUB XC-540	2
4	1000003383	ASSY,TUBING 2*30MM VP-540	1
	(31539113)	(TUBE,INK N 2FAI 100M)	Revised 7
5	1000002538	BASE,CAP VP-540	1
	1000006234	BASE,CAP 2 VP-540I	Revised 3 1
6	22175815	BEARING F8-16ZZ	1
7	1000000796	BUSH,80F-0503	12
8	1000002179	CABLE-ASSY,PUMP MOTOR VP-540	1
9	21365121	CASE,CAP TOP FJ-540	4
10	1000002564	COUPLING,PUMP VP-540	1
11	22025671	COVER,CAP CASE FJ-540	4
12	12239406	CUSHION,TM-96-6	1
13	1000002095	FITTING,TUBE PP VFY206	2
14	1000002536	FRAME,BACK-UP CAP VP-540	1
	1000006241	FRAME,BACK-UP CAP 2 VP-540I	Revised 3 1
15			
16	21685122	GEAR,S10S20	2
17	22135616	GUIDE,CAP CASE FJ-540	1
18	22135349	STOPPER,PEN-HOLDER CM-24	4
19	22435106	MOTOR,103-593-1041	1
20	1000002595	PLATE,P-BEARING VP-540	1
21	1000001585	PLATE,P-MOTOR XC-540	1
22	1000002539	SHAFT,CAP VP-540	4
23	1000002563	SHAFT,PUMP VP-540	1
24	1000003104	SHEET,BASE CAP VP-540	1
25	22175334	SPRING,CAP HEAD FJ-540	8
26	1000002561	SPRING,CAP SWING VP-540	2
27	1000003033	STAY,GUIDE CAP-CASE VP-540	1
28	1000002565	STAY,PUMP ASSY VP-540	1
29	1000002019	STOPPER,PUMP XC-540	4
30	1000002645	STOPPER,SHAFT CAP VP-540	4
31	1000002119	TUBE,EPDM ID2-OD4 310MM	2
	(3000000053)	(TUBE,EPDM ID2-OD4 100M)	Revised 7

## PARTS LIST -Supplemental Parts-

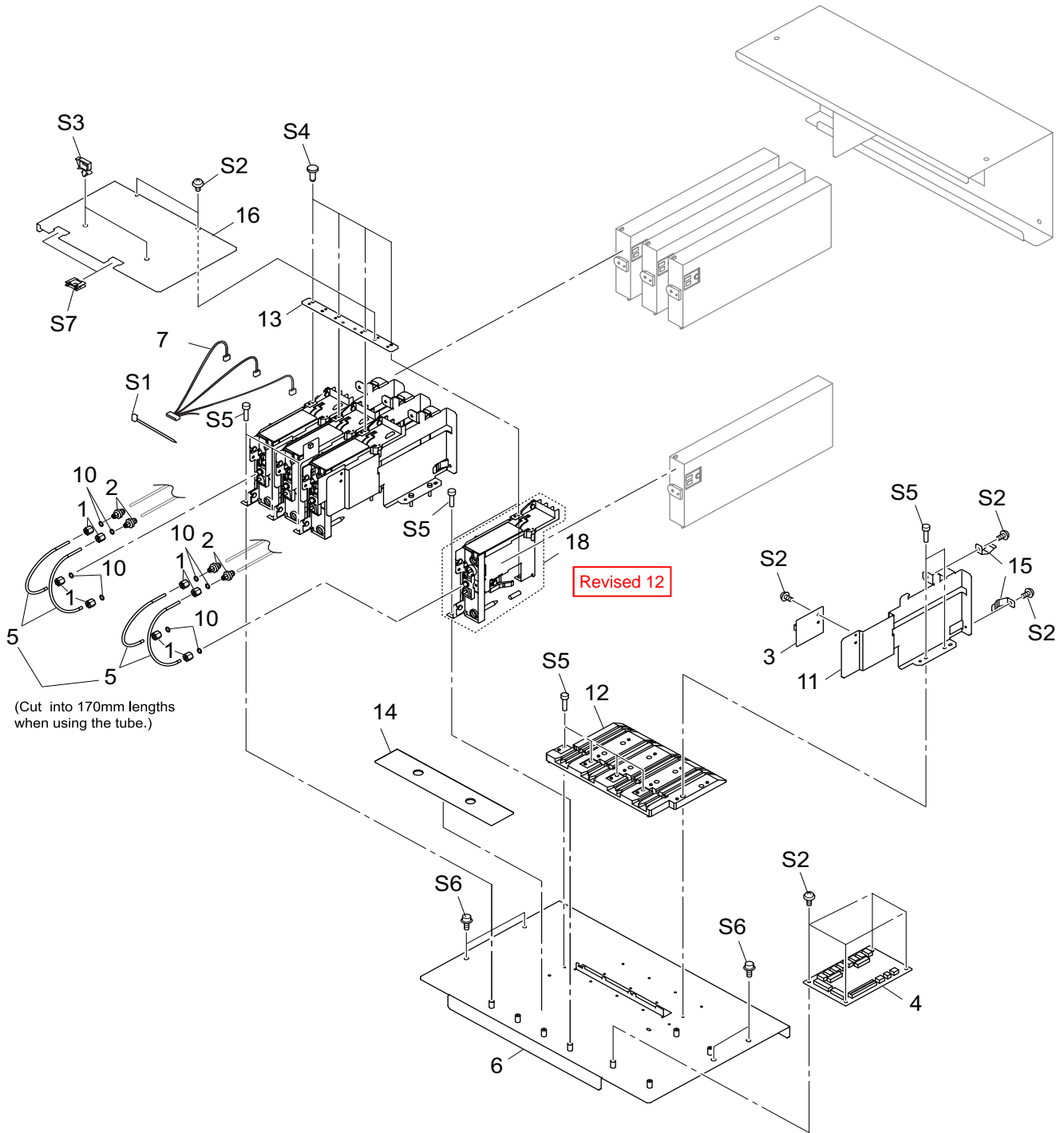
	Parts No.	Parts Name	qt.
S1	31029106	BUSH,SQUARE SB-6025	1
S2	31289109AS	CUPSCREW SET,M3*4 NI 100 PCS.	17
S3	31109601	NUT SET,SQUARE M3*6*1.6 FE NI 100PCS	1
S4	31019116AS	SCREW SET,BINDING M3*6 3CBC 100 PCS	9
S5	31049169AS	SCREW SET,CAP M4*8 3CBC+PW 20PCS	6
S6	31199701AS	SCREW SET,SET WP M3*3 NI 20 PCS	4
S7	31179106	SCREW,JACK UP SP-540V	2
S8	31049169AS	SCREW SET,CAP M4*8 3CBC+PW 20PCS	2
S9	31329601AS	CLAMP SET,INSULOK T-18S 100 PCS.	1

\* qt. indicates the number of parts that is described in the figure.

**Revised 2:** 1000004546 ASSY,CAP-TOP 2 XC-540  
Refer to the Service Information : RS640-001

**Revised 3:** Refer to the Service Information RS640-005.

# 1-11 INK SYSTEM



## PARTS LIST -Main Parts-

	Parts No.	Parts Name	qt.
1	11909133	ADAPTER,SCREW 2FAI FJ-50	8
2	1000004796	ADAPTER,JOINT 2-3FAI RS-540	4
3	W700981270	ASSY,CARTRIDGE IC BOARD RS-540	4
4	W700981230	ASSY,FEED MOTOR BOARD RS-540	1
5	22805549	ASSY,TUBING 2*600MM SJ-1000	4
	(31539113)	(TUBE,INK N 2FAI NO.1080249)	Revised 7
6	1000002568	BASE,INKCARTRIDGE VP-540	1
7	1000002172	CABLE-ASSY,INK CARTRIDGE VP-540	1
9	41659248	HOLDER,IC SC-500	Revised 12
10	11659149	HOLDER,RING O 2FAI FJ-50	8
11	1000001473	PLATE,HOLDER I/C XC-540	4
12	22055435	PLATE,INK FJ-500	1
13	1000002560	PLATE,INK JOINT VP-540	1
14	21475153	SHEET,INK CARTRIDGE SP-300	1

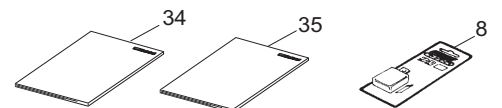
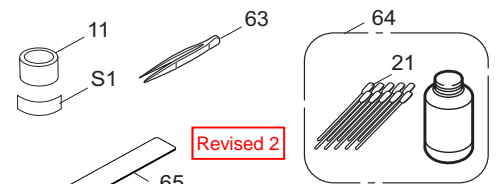
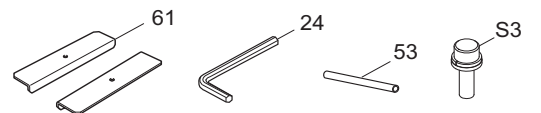
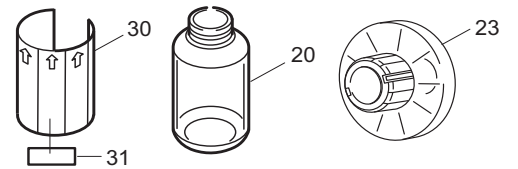
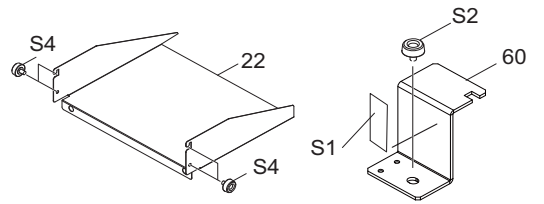
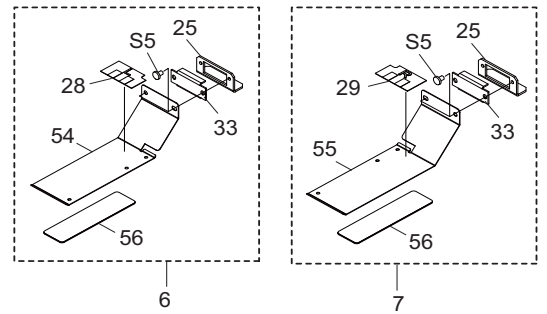
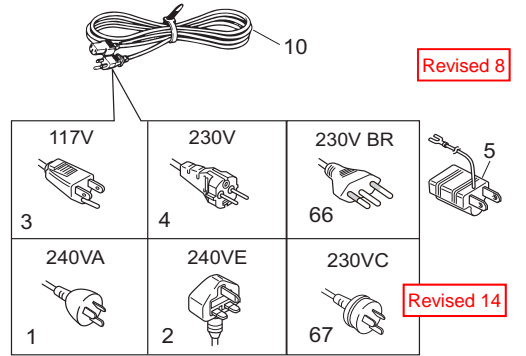
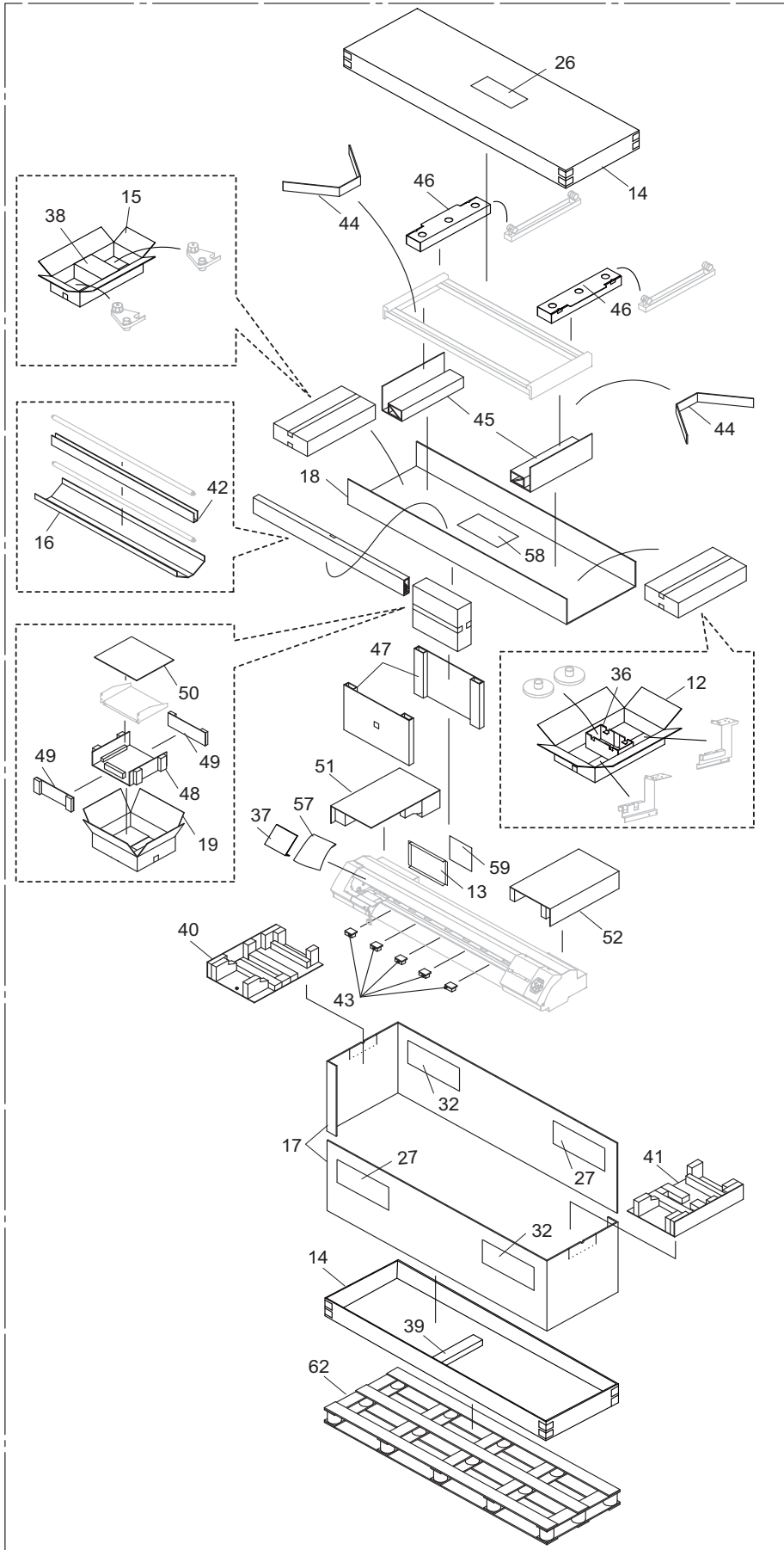
	Parts No.	Parts Name	qt.
15	22625103	SPRING,PRESS CARTRIDGE SP-300	8
16	1000005645	PLATE,COVER CARTRIDGE IC RS-540	1
17	21435109	TUBE,SILICONE 3*5*8 FJ-540	Revised 12
18	6700980300	ASSY,HOLDER I/C RS-540	Revised 12

## PARTS LIST -Supplemental Parts-

	Parts No.	Parts Name	qt.
S1	31329601AS	CLAMP SET,INSULOK T-18S 100 PCS.	1
S2	31289109AS	CUPSCREW SET,M3*4 NI 100 PCS.	20
S3	31409801AS	SADDLE,LOCKING WIRE LWS-0711Z 20P	2
S4	31019801	SCREW,BINDING S-TIGHT M3*6 3C 100PCS	4
S5	31799103	SCREW SET,CAP M3*15 NI 20PCS	20
S6	31049169AS	SCREW SET,CAP M4*8 3CBC+PW 20PCS	4
S7	31409702	SADDLE SET,LOCKING WIRE LES-1010 20P	2

\* qt. indicates the number of parts that is described in the figure.

# 1-12 ACCESSORY



# 1-12 ACCESSORY

## PARTS LIST -Main Parts-

	Parts No.	Parts Name	qt.
1	23495124	AC CORD 3ASL100 240VA 10A SAA	1
2	13499111	AC CORD H05VV-F 240VE 10A S	1
3	13499109	AC CORD SJT 117V 10A 3PVC	1
4	23495125	AC-CORD H05VV 230V 10A S	1
5	13499209	ADAPTER PLUG (100V)	1
6	6700989020	ASSY,CLAMP MEDIA L RS-540	1
7	6700989030	ASSY,CLAMP MEDIA R RS-540	1
8	11849102	BLADE,OLFA AUTO CUTTER XB10	1
9	<del>13439801</del>	<del>CABLE-AC 3P CHINA 10A/250V S</del>	<del>1</del>
			Revised 2
10	23495117	CABLE-AC,VCTF 100V 12A 3P-S	1
11	22335143	CAP,EPDM	1
12	1000004727	CARTON,ACCESSORY RS-540	1
13	22605305	CARTON,COVER INK SP-300	1
14	1000002688	CARTON,COVER VP-540	2
	1000004759	CARTON,COVER RS-640	2
15	1000005197	CARTON,FEEDER RS-540	1
16	1000004728	CARTON,PIPE FEEDER SHAFT RS-540	1
	1000004762	CARTON,PIPE FEEDER SHAFT RS-640	1
17	1000005273	CARTON,SLEEVE RS-540	2
	1000004760	CARTON,SLEEVE RS-640	2
18	1000004761	CARTON,STAND RS-640	1
	1000002694	CARTON,STAND VP-540	1
19	1000003077	CARTON,TRAY 440 VP-540	1
20	11369115	CASE,PP BOTTLE	2
21	ST-037	CLEAN STICK TX712A	10
22	1000002650	COVER,440CC I/C VP-540	1
23	21995106	FLANGE,GUIDE 2 PNS-70	2
24	22565682	HEXAGONAL WRENCH 5	1
25	1000005204	HOLDER,CLAMP MEDIA RS-540	2
26	22535532	LABEL,CARTON CARE #LA762	1
27	1000004755	LABEL,CARTON RS-540#LA1067	2
	1000004757	LABEL,CARTON RS-640#LA1068	2
28	1000003651	LABEL,CLAMP L XJ-740#LA1023	1
29	1000003650	LABEL,CLAMP R XJ-740#LA1024	1
30	22535144	LABEL,DRAIN BOTTLE #LA29	2
31	1000001099	LABEL,HARMFUL FIRE #LA915	2
32	22535357	LABEL,USE FORKLIFT #LA435	2
33	1000005205	MAGNET,SMF-1042KA	2
	1000010122	MAGNET,CLAMP MEDIA XF-640	2
			Revised 15
34	1000004668	MANUAL,INS EN RS-640	1
	1000004667	MANUAL,INS JP RS-640	1
35	1000004666	MANUAL,USE EN RS-640	1
	1000004665	MANUAL,USE JP RS-640	1

## PARTS LIST -Main Parts-

	Parts No.	Parts Name	qt.
36	1000005198	PAD,ACCESSORY RS-540	2
37	1000004192	PAD,COVER FRONT VP-540	1
38	1000005199	PAD,FEEDER RS-540	1
39	1000003565	PAD,L-CENTER XJ-740	1
40	1000002690	PAD,L-LEFT VP-540	1
41	1000005216	PAD,L-RIGHT RS-540	1
42	1000004729	PAD,PIPE FEEDER SHAFT RS-540	1
	1000004763	PAD,PIPE FEEDER SHAFT RS-640	1
43	1000005200	PAD,SPACER RAIL RS-540	5
44	1000005196	PAD,SPACER STAND RS-540	2
45	1000002695	PAD,STAND L/R VP-540	2
46	1000005195	PAD,STAND UPPER RS-540	2
47	1000005217	PAD,SUPPORT STAND RS-540	2
48	1000003078	PAD,TRAY 440 A VP-540	1
49	1000003079	PAD,TRAY 440 B VP-540	2
50	1000003080	PAD,TRAY 440 C VP-540	1
51	1000005274	PAD,U-LEFT RS-540	1
52	1000005275	PAD,U-RIGHT RS-540	1
53	22155133	PIPE,TOOL D9*L150 FJ-540	1
54	1000005203	PLATE,CLAMP MEDIA L RS-540	1
55	1000005202	PLATE,CLAMP MEDIA R RS-540	1
56	1000001602	SHEET,CLAMP MEDIA XC-540	2
57	1000002042	SHEET,MIRROR DU-540	1
58	1000004669	MANUAL,STICKER REP JP/EN RS-640	1
59	22735135	STICKER,SUP JP/EN SP-300	1
60	1000004717	STOPPER,CARRIAGE RS-540	1
61	1000003635	STOPPER,PIPE FEEDER XJ-740	2
62	1000005276	TRAY,SKID RS-540	1
	1000004758	TRAY,SKID RS-640	1
63	12569656	TWEEZERS PTS-01	1
64	22085118	KIT,CLEANING(SL)	1
65	1000006413	LABEL,USE ONLY FPG2 #1162	1
			Revised 2
66	1000006571	CABLE-AC,3P 117/230V BR 2.5M	1
			Revised 8
67	13439801	CABLE-AC 3P CHINA 10A/250V S	1
			Revised 14

\* Only for RS-640

## PARTS LIST -Supplemental Parts-

	Parts No.	Parts Name	qt.
S1	31279201	LABEL,REPACKAGE #LA16	2
S2	31139103	PLAPOINT,FE4*6 WH	1
S3	31049157	SCREW,CAP M6*20 3CBC+PW+SW	32
S4	31139104	SCREW,PLAPOINT M4*6 BK FE	4
S5	31019148AS	SCREW SET,BINDING M2.6*4 NI 100 PCS	4

\* qt. indicates the number of parts that is described in the figure.