

Windows XP Hasp Update

18 January 2005

During January 2005 Microsoft offered an automatic update for their XP operating system that may cause a problem with your Aladdin key driver. This change may cause the Scanvec Amiable software to be unable to locate the Hasp key.

To correct this problem, a simple Hasp Driver updater is available to download and run.

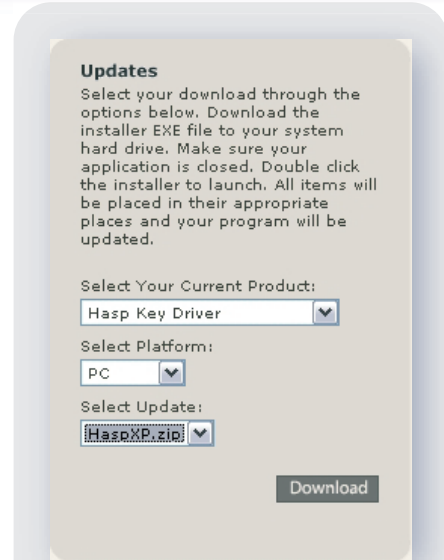
The new XP Hasp driver is necessary **ONLY** for users who have installed a Windows XP Update during January 2005, and have an Aladdin brand security key.

Easily update your HASP Driver

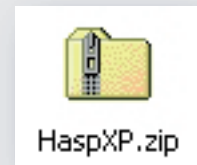
This new XP Hasp driver is easy to install:

1. Close your **Flexi**, **PhotoPRINT** or **EnRoute** application completely.
2. Download the XP Hasp Update from the Scanvec Amiable website:
 - a. www.ScanvecAmiable.com
 - b. Under the SUPPORT section, choose DOWNLOAD LIBRARY
 - c. Locate the UPDATE section
 - d. From the drop down list, select the "Hasp Key Driver"
 - e. Under Platform, select "PC" as your platform
 - f. From the drop down list select "HaspXP.ZIP"
 - g. Click the DOWNLOAD button
3. Download the HaspXP.ZIP file onto your computer's desktop or other location.
4. Unzip the HaspXP.ZIP file into its component files:
 - Haspinstall.BAT
 - HInstall.EXE
 - Haspds_windows.dll
 - ReadMe.txt
5. Double click on the HaspInstall.BAT file to automatically install the update
6. You will be prompted "The operation was successfully completed."
7. Open your **Flexi**, **PhotoPRINT** or **EnRoute** and it will find the key
8. You may delete the ZIP file and updater files:
 - HaspXP.ZIP
 - HaspInstall.BAT
 - HInstall.EXE
 - Haspds_windows.dll
 - ReadMe.txt

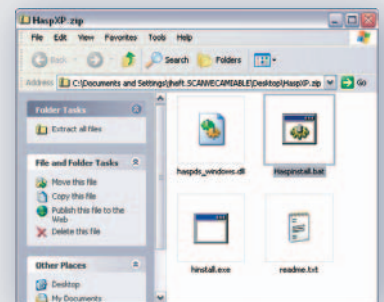
NOTE: You will now be able to open and operate your Scanvec Amiable software without a key error.



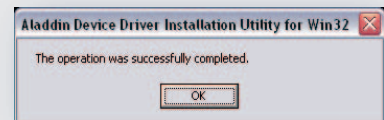
Web UPDATE Section



Extract HaspXP.ZIP



HaspInstall.BAT



Update Completed

